



Customized Shape Industrial Aluminium Profile Electrical Cover / Electrical Shell

Our Product Introduction

for more products please visit us on aluminumextrusion-profiles.com

Basic Information

- Place of Origin: China
- Brand Name: Hentec
- Certification: SGS
- Minimum Order Quantity: 1 ton
- Packaging Details: Ep paper ,kraft ,pallet
- Delivery Time: 20days
- Payment Terms: T/T ,L/C
- Supply Ability: 100 000ton each month



Product Specification

- Product Name: Industrial Aluminium Profile
- Alloy: 6063,6061
- Material: Aluminum
- Surface Treatment: ,Anodized ,Electrophoretic Coated,Powder Spray Coated
- Deep Process: Milling, Drilling, Bending,Cutting
- Temper: T5, T6
- Highlight: **aluminum extrusion profiles,**
aluminium door frame

Product Description

Customized Shape Industrial Aluminium Profile Electrical Cover / Electrical Shell

Hentec Industrial Co.,Ltd is professional serves for Building doors and windows profiles, Railway, Cars with aluminum, IT computer , Communications, Electrical, Mechanical, High-speed rail transportation, Refrigerated containers etc., special aluminum profiles for 15 years.

Product Description

1. Description: Aluminum mill surface profile
2. Alloy temper: 6060/6063-T6/T5;
3. Standard: EN755, ASTM B221, DIN Standard
4. Surface treatment: Mill finishes; Anodized; Powder coated, wooden grain, polished, brushed.
5. Application: Construction; Window; Door; Decoration; Architecture and etc.
6. Advantage:
 - 1) Pure 99.7% aluminum materials without any scrap used
 - 2) OEM welcome, we can design and cut die to meet customer's special demand
 - 3) Wonderful surface treatment, we can meet customers required on surface
 - 4) Strictly quality control process assured higher quality.
 - 5) Packing safety and convenient.

1	Business type:	Real Big Manufacturer & Exporter with 17years experience
2	Production Standard:	Architecture Profile : GB 5237-2008 Industry Profile : GB/T6892-2008
3	Main products	Aluminum extrusion profiles for architectural & industrial, Different aluminum profile sections for different applications . Aluminum Formwork for Building Construction.
4	Manufacture Process	1. Mould /Tooling analysis, design & manufacturing 2. Mould /Tooling testing & confirm the sample 3. Die-casting rough parts 4. Precision machining: CNC lathes, milling, drilling, grinding etc 5. Surface treatment: Trimming, polishing, cleaning, passivation & power coating and other requirement from Customer 6. Full Inspection 7. Packing
5	Price:	Aluminium Ingot price +different finishes processing Fee + local cost
6	Payment term:	T/T, L/C at sight
7	Specification:	A. Alloy: 6063, 6060, 6061, 6005 etc B. State: T5/T6 C. Length: 1m-13 m (polishing : 2.5 m) D. Normal Anodizing thickness: 8-12 micro E. Normal powder coating thickness: 60-100 micro F. Tensile strength: ≥ 16 mpa G. Yield strength: ≥ 110 mpa H. Extensibility: $\geq 8\%$ I. Hardness(HW): ≥ 8
8	Packing:	Kraft paper, EPE Fram, Shrink film, Carton Box, Wooden box etc, Customized package is available.
9	MOQ:	1X20 FCL ,Each profile not less than 500 kgs. Each color not less than 2 tons.
10	Sample time	10-15 days after drawing confirmed and mold cost paid.
11	Delivery time:	35 days after deposit received.
12	Port	Shanghai Port

Order, payment, terms, shipment

- 1, Minimum order: 500kg per trial order 1 piece of sample free of charge provided by approval and kept for future mass production.
- 2, Sample Lead Time: 25 working days (15 days for making the tool and 10 days making the samples. Before sending the samples to customer, samples should pass strict test in our lab.) Production Lead time: it depends on customers' order quantity (30 working days after deposit).
- 3, Payment: (Can negotiate with customers, our usual practices are as follow)
- 4, Tooling: 100% prepaid by T/T.
- 5, Parts: 30% upon order confirmation and balance before delivery by T/T

Applications:

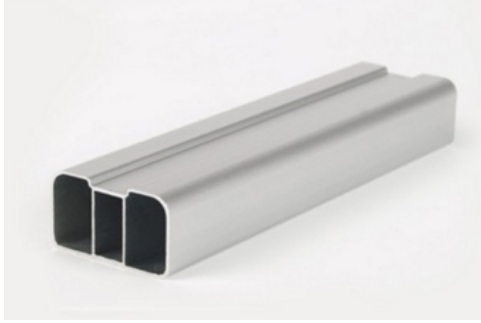
Aluminum profile used in cars, trains machinery ,electronics, medical and other industrial filed . In terms of hardware, machinery, electromechanical parts, solar PV products, aluminum frames are adopt as important auxiliary materials. We also have aluminum profiles for radiators, fitness machinery, buildings, lighting instrument, windpipes, oil pipelines, for instance.

Advantage :


1. Adopt 99.7% aluminum ingots as raw material.
2. Reasonable price and good quality.
3. Payment terms: T/T, L/C
4. Terms for Delivery: Ex-work, FOB, CIF
5. Samples of aluminum profile sent within 10 days

6. Lead time is 15-20 days.

7. Aluminum Profile Monthly production capability is 4000 tons.



 **HENTEC** Hentec Industry Co.,Ltd

 +86-13861643436

 aluminum@hentec.com.cn

 aluminumextrusion-profiles.com

Qinfeng Road No.555 Huashi Town Jiangyin Jiangsu China (mainland) 214421