



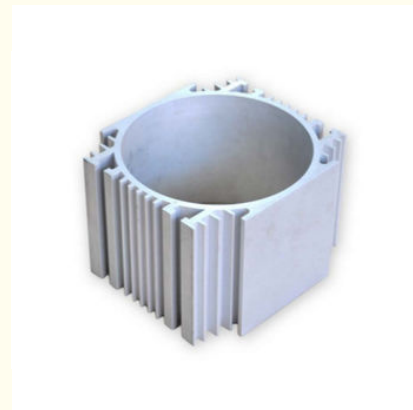
Silvery Anodized CNC Machining 6063 Aluminium Cylinder Shell For Automotive

Our Product Introduction

for more products please visit us on aluminumextrusion-profiles.com

Basic Information

- Place of Origin: China
- Certification: SGS
- Minimum Order Quantity: 1 ton
- Packaging Details: Ep paper ,kraft ,pallet
- Delivery Time: 20days
- Payment Terms: T/T ,L/C
- Supply Ability: 100 000ton each month



Product Specification

- Product Name: Industrial Aluminium Profile
- Alloy: 6063,6061,6005
- Material: Aluminum
- Surface Treatment: Mill Finished,Anodized ,Electrophoretic Coated,Powder Spray Coated
- Deep Process: Milling, Drilling, Bending,Cutting
- Temper: T4, T5, T6 ,T66
- Highlight: **aluminum extrusion profiles,
aluminium door frame**



Product Description

Silvery Anodized Industrial Aluminum Porifle / Aluminium Cylinder Shell for Automotive

DETAIL FEATURES:

- 1--. Quality material: 6063 (6061, 6060, 6005, 6082 available)
- 2--. Machining: CNC machining (Lathe/ Mill / Polish / Punch / Drill / Tap / Bend/ Weld are available.)
- 3--. Finishing: Silver anodizing (Hard anodized / Powder coating / Painting / Silkscreening, Mill, etc.)
- 4--. Shape: Square (Round, Retangular, Ovel, Angle, Flat, etc.)
- 5--. OEM design/specifications are welcome

ADVANTAGES of choosing our Alu.:

- 1--. **QUALITY GUARANTEED:** One-stop service, tool design, smelting, extruding, machining, surface treatment, packing as well as assembling can be all finished in house.
- 2--. **RELIABLE QUALITY:** Our company is ISO9001: 2008 certified
- 3--. **High Efficiency:** Most competitive price with short lead time for tooling design and the parts
- 4--. **Efficient COMMUNICATION** (48-hour quotes price/lead time/MOQ)
- 5--. **Compliant test with RoHS**

Quotation is usually based on:

- 1) Detail drawings;
- 2) Buyers' samples;
- 3) Specification, pictures of the products.

Order,payment,terms,shipment

- 1, Minimum order: 500kg per trial order 1 piece of sample free of charge provided by approval and kept for future mass production.
- 2, Sample Lead Time: 25 working days(15 days for making the tool and 10 days making the samples. Before sending the samples to customer, samples should pass strict test in our lab.) Production Lead time: it depends on customers' order quantity (30 working days after deposit).
- 3, Payment: (Can negotiate with customers, our usual practices are as follow)
- 4, Tooling:100% prepaid by T/T.
- 5, Parts:30% upon order confirmation and balance before delivery by T/T

Applications:

Mainly used for industrial production , such as automation equipment , enclosure of the skeleton and the companies according to their own customized mold machinery and equipment , such as assembly line conveyor , hoist, dispenser, testing equipment, shelves , etc., electronic machinery industries and clean room with a gain majority.

Competitive Advantage:

1. good quality aluminium profile with economic price
2. 15-year manufacturing experience
3. ISO9000
4. ODM or OEM



FAQ For Saving Your Precious Time!

Q1:What's the thickness for anodizing?Can you do 15um?

A:Our normal thickness is about 10 um.Yes, we can do 15um and above.

Q2:What color you can do for powder coating?The thickness for powder coat?

A:We can do any color for powder coat as long as you can provide the color sample.Our normally powder coating thickness is 60-80um.

Q3:What color you can do for wood grain?

A:Our most popular colors are Western Red Cedar, Australia Cedar, Jarrah I, Jarrah II, Chestnut, Bush Cherry, Bush Wood, Western Wood, Snow Gum, etc.If you need any other colors, we can do according to the color samples you provide.

Q4:How's the weather resistance for wood grain finish D1010?

A:(1).Powder: Akzo Noble Interpon D1010.

(2).Wood grain film: Italian Memphis.

(3).Standard complied: American AAMA Standard.2603

(4).UV test:1000 hours.

(5).Salt spraying test:1000 hours.

(6).Normal weather:10 years color guarantee.

Q5:What certification do you have?What's your standard?

A:We have ISO certification.Our standard is DIN, AAMA, AS/NZS, China GB.

Q6:What's the delivery time for samples and mass production?

A:(1).2-3 weeks to make the new moulds and make free samples.

(2).3-4 weeks after receipt of deposit and confirmation of the order.

HENTEC Hentec Industry Co.,Ltd

+86-13861643436

aluminum@hentec.com.cn

aluminumextrusion-profiles.com

Qinfeng Road No.555 Huashi Town Jiangyin Jiangsu China (mainland) 214421