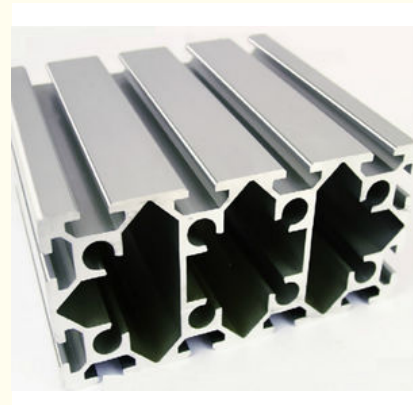




Anodized Aluminium Extrusion Frame System T Shaped Aluminium Profile

Basic Information

- Place of Origin: China
- Brand Name: HENTEC
- Certification: CA ,CE ,ISO14001:2004, ISO9001:2000
- Minimum Order Quantity: 1 ton
- Packaging Details: Ep paper ,kraft ,pallet
- Delivery Time: 20days
- Payment Terms: T/T ,L/C
- Supply Ability: 100 000ton each month



Product Specification

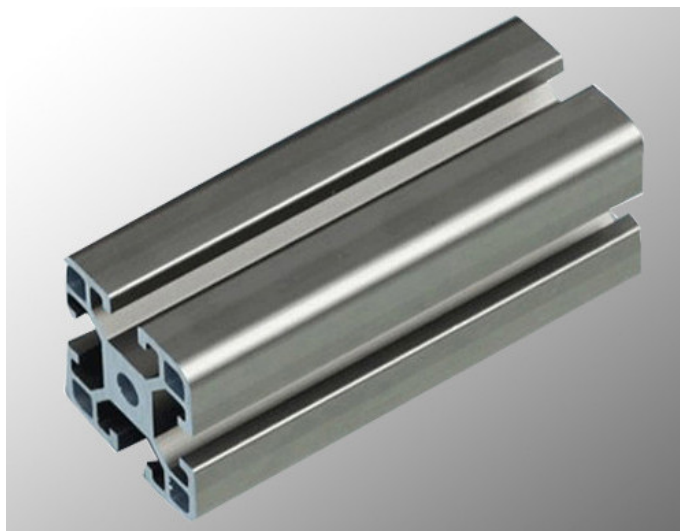
- Product Name: Industrial Aluminium Profile
- Alloy: 6063
- Material: Aluminum
- Surface Treatment: Mill Finished, Anodized Powder Spray Coated
- Deep Process: Milling, Drilling, Cutting
- Temper: T5, T6
- Highlight: **modular aluminium profile system,
aluminium extrusion frame system**

Product Description

Anodized Industrial Aluminium Profile ,T-Slot Aluminum Extrusion Profile for Assembly Line

Product Specification

Item	Aluminum Assembly Line
Material	Aluminium 6000 series alloy, such as 6061, 6063, 6082 etc.
Temper	T5, T6
Size	customized.
Shape	Square, flat, round, hollow, oval, triangle, U-profile, L-profile, T-profile, H-profile, customized available.
Surface Treatment	Anodizing , Powder Painting , Mill Finished
Color	Silver, champagne, black, bronze, gold, white or customized
Application	Window and door with thermal break strips, curtain wall, glass wall, furniture, ceiling, kitchen, LED strip, transportation rail, vehicle, motor housing, machine, tent, solar panel, industrial profile, decoration profile etc.
Deep Process	CNC, drilling, milling, cutting, tapping, welding, bending, assembling.
MOQ	500 kgs for each item, usually 13-15 tons for a 20GP, 25-28 tons for a 40HQ.
OEM service	Drawing, sample or design service offer by customer.
Production Capacity	2400-3000 Metric tons monthly.
Brand Name	HENTEC
Certificates and Standard	1) ISO9001-2008/ISO 9001:2008; 2) CQM CERTIFICATES; 3) SGS, CE, BV, JIS, AS, NZS, QUALICOAT, QUOLANOD AVAILABLE.
Guarantee	Surface color can be stable for 10-20 years indoor using.
Packing Details	Inside: pack with EP foam Outside: craft paper ,Pallet , Wooden Case
Delivery time	Die developing and sample testing: 12-18 days . Mass production: 25-30 days after confirming sample by buyer.
FOB Port	Shanghai Port
Payment Terms	T/T 30% for deposit, balance before delivery.



Factory Capacity:

Die Center

CNC cutting: 5 sets

CNC lathe: 2 sets

CNC machining center: 15 sets

Extrusion Lines

Extrusion lines: 22 sets imported from Japan, Italy with annual capacity 400 thousands of tons.

Anodizing Lines

With 2 full-automatically horizontal type and 1 vertical type.

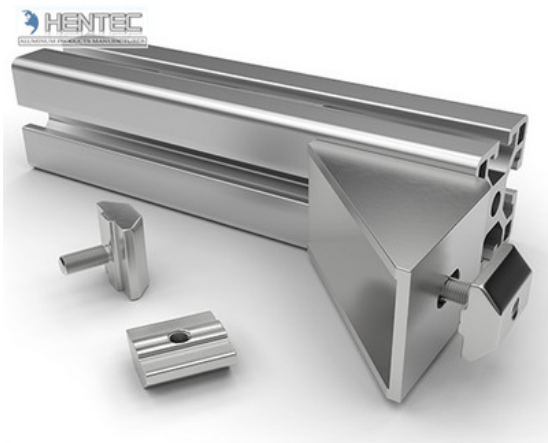
The oxidize aluminum materials length is up to 10m, electrophoretic materials length is up to 7.5m, with an annual output of 150,000 tons.

Powder coating lines

With 2 powder coating lines from Italy and 4 sets of guns from Switzerland

Applications:

Industry Aluminum profile used in assembly production line , electronics, medical and other industrial filed . In terms of hardware, machinery, electromechanical parts, solar PV products.



Specifications:

1.Primary Technical Data

1)Chemical composition

Alloy	Si	Fe	Cu	Mn	Mg	Cr	Zn	Ti	Impurity	Al
6063	0.2-0.6	0.35	0.1	0.1	0.45-0.9	0.1	0.1	0.1	0.15	Rest
6061	0.4-0.8	0.7	0.15-0.4	0.15	0.8-1.2	0.04-0.35	0.25	0.15	0.15	Rest
6060	0.3-0.6	0.1-0.3	0.1	0.1	0.35-0.6	-	0.15	0.1	0.15	Rest
6005	0.6-0.9	0.35	0.1	0.1	0.40-0.6	0.1	0.1	0.1	0.15	Rest

2)Mechanical property

Alloy	Temper	Tensile strength	Yield strength	Elongation
6063	T5	≥ 160Mpa	≥ 110Mpa	≥ 8%
	T6	≥ 205Mpa	≥ 180Mpa	≥ 8%
6061	T6	≥ 265Mpa	≥ 245Mpa	≥ 8%

公司图号	横 面	线密度 kg/m
HT-745		1.292
HT-746		0.786
HT-747		2.524
HT-749		0.464
HT-750		0.808
HT-751		1.616

公司图号	横 面	线密度 kg/m
HT-752		1.646
HT-753		2.952
HT-754		2.015
HT-767		1.522

Competitive Advantage:

- 1)Engineering design and support.
- 2)Aluminum profiles deeply processing:cutting,punching,drilling,milling,and fabricating.

- 3)High Quality system, strictly inspection during production and whole inspection before package.
4)Good performance, product warranty for 15 years.



HENTEC Hentec Industry Co.,Ltd

+86-13861643436

aluminum@hentec.com.cn

aluminumextrusion-profiles.com

Qinfeng Road No.555 Huashi Town Jiangyin Jiangsu China (mainland) 214421