

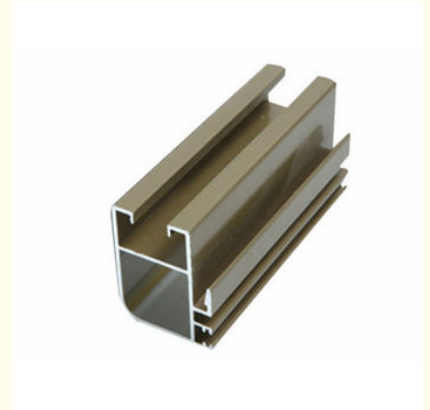


Anodized Aluminum Construction Profile / Industrial Profile Weather Resistance

Our Product Introduction

Basic Information

- Place of Origin: China
- Brand Name: HENTEC
- Certification: SGS
- Minimum Order Quantity: 1 ton
- Packaging Details: Ep paper ,kraft ,pallet
- Delivery Time: 20days
- Payment Terms: T/T ,L/C
- Supply Ability: 100 000ton each month



Product Specification

- Material: Aluminum
- Temper: 6063-T5
- Surface: Anodized
- Color: Silvery
- Usage: Construction
- Shape: Customized
- Highlight: **aluminium extruded profiles,
aluminum extruded shapes**

Product Description

Anodized Aluminum Extrusion Profile , Construction Profile / Industrial Profile

Product Description

- (1). Suitable for industry,architecture,transportation and so on.
- (2). 20 years warranty.
- (3). High corrosion resistance.
- (4). 5-10 years weather resistance.
- (5). Good wear resistance & anti-scratch.
- (6). Size customized.

More Information:

1. Material: Aluminium alloy 6063, 6061.
2. Temper: T5, T6.
3. Quality standard: DIN, AAMA, CHINA GB.
4. Surface treatment: Mill finish, anodized, powder coated, electrophoresis, sand blasting etc.
5. Color available: Silver, Any is available.
6. Packing details: Shrinking film;Plastic & kraft paper;Wooden pallet
- Carton packing:By customer's requirements.
7. Samples time: One or two weeks.
8. Delivery: 20-25 Days for Mass Production.
9. Production Capacity: 6000MT/Month
10. MOQ: 1 TONS
12. Payment terms: T/T
13. Port:Shanghai;As per requested.

Product Name	Anodized Aluminum Extrusion Profile , Construction Profile / Industrial Profile
Alloy	6063, 6061,6082, 6060, 6005
Length	Longest 7m (or upon clients' requests measurement the length).
Surface treatment	Powder coating, anodize oxidation, electrophoresis coating, wood-structure pattern, Liquid coated
Execute standard	ASTM B221, EN755, GB5237.
Qualification	Qunicoat, ISO 9001: 2000, ISO14000, China top brandquality, China quality mark(CQM)certification, adopt the international standard product.
Quality control	100 % quality inspectors.
Equipment	Import high quality machines from developed country with 32 extruders and 2 sets 4000T extruder form USA

Applications:

Industry Aluminum profile used in cars, trains machinery ,electronics, medical and other industrial filed . In terms of hardware, machinery, electromechanical parts, solar PV products, aluminum frames are adopt as important auxiliary materials. We also have aluminum profiles for radiators, fitness machinery, buildings, lighting instrument, windpipes, oil pipelines, for instance.

Specifications:

1. Primary Technical Data

1) Chemical composition

Alloy	Si	Fe	Cu	Mn	Mg	Cr	Zn	Ti	Impurity	Al
6063	0.2-0.6	0.35	0.1	0.1	0.45-0.9	0.1	0.1	0.1	0.15	Rest
6061	0.4-0.8	0.7	0.15-0.4	0.15	0.8-1.2	0.04-0.35	0.25	0.15	0.15	Rest
6060	0.3-0.6	0.1-0.3	0.1	0.1	0.35-0.6	-	0.15	0.1	0.15	Rest
6005	0.6-0.9	0.35	0.1	0.1	0.40-0.6	0.1	0.1	0.1	0.15	Rest

2)Mechanical property

Alloy	Temper	Tensile strength	Yield strength	Elongation
6063	T5	≥ 160Mpa	≥ 110Mpa	≥ 8%
	T6	≥ 205Mpa	≥ 180Mpa	≥ 8%
6061	T6	≥ 265Mpa	≥ 245Mpa	≥ 8%

Competitive Advantage:

- WHO ARE WE

1. **Top Aluminium** profile manufacturer for 20 years in China.
2. **Diverse Products** used in the fields of construction, industry and deep-processing.

- WHY CHOOSE US

1. **Quality Control** is put in the core position of our production.
2. **Customized Production** shows our capability in product design and process control.


3. **Perfect Customer Services** include careful packaging, quick delivery and good after-sale service.


- WHERE DO WE EXPORT

1. **North America:** USA, Canada.
2. **South America:** Brazil, Argentina, Chile, etc.
3. **Europe:** Spain, France, Germany, The Netherlands, Russia, etc.
4. **Aisa and Oceania:** Vietnam, Thailand, India, Australia, etc.
5. **Total 53 countries.**



 **HENTEC** Hentec Industry Co.,Ltd

 +86-13861643436

 aluminum@hentec.com.cn

 aluminumextrusion-profiles.com

Qinfeng Road No.555 Huashi Town Jiangyin Jiangsu China (mainland) 214421