

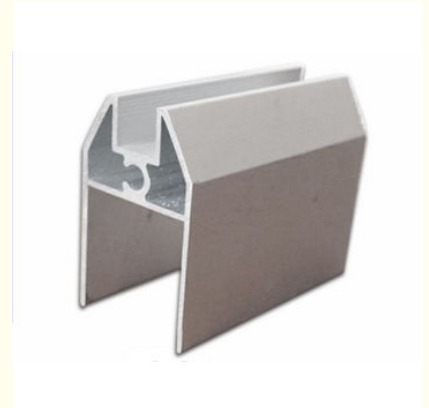
Custom Elevator 6063 6061 Aluminum Profile / Construction Profile

Our Product Introduction

for more products please visit us on aluminumextrusion-profiles.com

Basic Information

- Place of Origin: China
- Brand Name: Hentec
- Certification: SGS
- Minimum Order Quantity: 1 ton
- Packaging Details: Ep paper ,kraft ,pallet
- Delivery Time: 20days
- Payment Terms: T/T ,L/C
- Supply Ability: 100 000ton each month



Product Specification

- Product Name: Industrial Aluminium Profile
- Alloy: 6063,6061
- Material: Aluminum
- Surface Treatment: Mill Finished,Anodized ,Electrophoretic Coated,Powder Spray Coated
- Deep Process: Milling, Drilling, Bending,Cutting
- Temper: T5, T6 ,T66
- Highlight: **aluminum extrusion profiles,
aluminium door frame**

Product Description

Custom Industrial Aluminium Profile / Elevator Aluminum Profile / Construction Profile

Product Description:

- 1.Material: Aluminium alloy 6063, 6061.
- 2.Temper: T5, T6.
- 3.Quality standard:CHINAGB.
- 4.Surface treatment: Mill finish, anodized, powder coated, wood grain, polished, brushed, electrophoresis, etc.
- 5.Color available: Anyone is available based on your color samples.
- 6.Packing details: Shrinking film; Plastic & kraft paper; Wooden pallet
Carton packing; By customer's requirements.
- 7.Samples Time: Normally, 2-3 weeks.
- 8.Delivery: 25-30 days for mass production.
- 9.Production Capacity: 6000T/Month
- 10.MOQ: It's based on the drawings. Basically, it's 2 tons.
- 11.Port: Shanghai ; As per requested.

Applications:

Aluminum profile used in cars, trains machinery ,electronics, medical and other industrial filed . In terms of hardware, machinery, electromechanical parts, solar PV products, aluminum frames are adopt as important auxiliary materials. We also have aluminum profiles for radiators, fitness machinery, buildings, lighting instrument, windpipes, oil pipelines, for instance.

Competitive Advantage:

- 1.good quality aluminium profile with economic price
- 2.15-year manufacturing experience
- 3.ISO9000
- 4.ODM or OEM

FAQ For Saving Your Precious Time!

Q1:What's the thickness for anodizing?Can you do 15um?

A:Our normal thickness is about 10 um.Yes, we can do 15um and above.

Q2:What color you can do for powder coating?The thickness for powder coat?

A:We can do any color for powder coat as long as you can provide the color sample.Our normally powder coating thickness is 60-80um.

Q3:What color you can do for wood grain?

A:Our most popular colors are Western Red Cedar, Australia Cedar, Jarrah I, Jarrah II, Chestnut, Bush Cherry, Bush Wood, Western Wood, Snow Gum, etc.If you need any other colors, we can do according to the color samples you provide.

Q4:How's the weather resistance for wood grain finish D1010?

A:(1).Powder:Akzo Noble Interpon D1010.

(2).Wood grain film:Italian Memphis.

(3).Standard complied:American AAMA Standard.2603

(4).UV test:1000 hours.

(5).Salt spraying test:1000 hours.

(6).Normal weather:10 years color guarantee.

Q5:What certification do you have?What's your standard?

A:We have ISO certification.Our standard is DIN, AAMA, AS/NZS, China GB.

Q6:What's the delivery time for samples and mass production?


A:(1).2-3 weeks to make the new moulds and make free samples.

(2).3-4 weeks after receipt of deposit and confirmation of the order.



 **HENTEC** Hentec Industry Co.,Ltd

 +86-13861643436

 aluminum@hentec.com.cn

 aluminumextrusion-profiles.com

Qinfeng Road No.555 Huashi Town Jiangyin Jiangsu China (mainland) 214421