



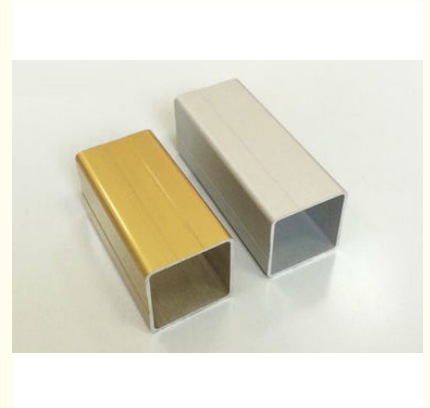
## Anodized / Powder Painting Aluminum Extrusion Profile / Square Shape / CNC Deep Processing

### Our Product Introduction

for more products please visit us on [aluminumextrusion-profiles.com](http://aluminumextrusion-profiles.com)

#### Basic Information

- Place of Origin: China
- Brand Name: HENTEC
- Certification: SGS
- Minimum Order Quantity: 1 ton
- Packaging Details: Ep paper ,kraft ,pallet
- Delivery Time: 20days
- Payment Terms: T/T ,L/C
- Supply Ability: 5000 ton each month



#### Product Specification

- Material: Aluminum
- Alloy: 6063 / 6061 / 6005
- Surface: Powder Painted / Anodize
- Shape: Square
- Logo: Silk Screen
- Color: Customized
- Highlight: **aluminium extruded profiles,  
aluminum extruded shapes**

## Product Description

### Anodized / Powder Painting Aluminum Extrusion Profile / Square Shape / CNC Deep Processing

#### Products Details

Aluminium Products Details	
Material	Alu alloy 6000 series, 6005 6060 6061 6063
Temper	T5 or T6
MOQ	1 ton for 6063/6061
Price Term	FOB, CIF, EXW etc
Port	Shanghai, China
Size	Can be customized
Shape	Round, oval, square or be designed.
Color	Black, golden, champagne, light green etc
Surface Treatment	Silver Anodized, powder coating, mill finished etc
Standard	GB/T5237-2000 & GB/T6892-2006, China standard
Certification	ISO9001-2008 & ISO14001-2004 & ROHS
Packing	Usually EP foam inside,
Delivery Time	Usually within 10-20 working days
Production Capacity	5000 tons per month
Application	Widely used in construction, decoration, and varied industry fields
Deep Processing	Extrude, precious cut, punch, drill, mill, tap, rivet etc

#### . Production Lines

Production Lines	Name	Qty	Max Product Length
Extruding Lines	600 ton extruder	5	
	800 ton extruder	2	
	1100 ton extruder	4	
	1250 ton extruder	4	
	1800 ton extruder	4	
	4500 ton extruder	2	
Surface Treatment Lines	Anodizing	1	≤6.5 m
	Powder coating	2	≤13 m
	Electrophoresis	1	≤6.5 m
Deep Processing Lines	Cutting machine	3	
	Punching machine	5	
	Milling machine	3	
	CNC machine	3	
	Polishing machine	1	
	Tapping machine	5	
	Riveting machine	1	

#### Applications:

Industry Aluminum profile used in cars, trains machinery ,electronics, medical and other industrial filed . In terms of hardware, machinery, electromechanical parts, solar PV products, aluminum frames are adopt as important auxiliary materials. We also have aluminum profiles for radiators, fitness machinery, buildings, lighting instrument, windpipes, oil pipelines, for instance.

#### Specifications:

##### 1.Primary Technical Data

###### 1)Chemical composition

Alloy	Si	Fe	Cu	Mn	Mg	Cr	Zn	Ti	Impurity	Al
6063	0.2-0.6	0.35	0.1	0.1	0.45-0.9	0.1	0.1	0.1	0.15	Rest
6061	0.4-0.8	0.7	0.15-0.4	0.15	0.8-1.2	0.04-0.35	0.25	0.15	0.15	Rest
6060	0.3-0.6	0.1-0.3	0.1	0.1	0.35-0.6	-	0.15	0.1	0.15	Rest
6005	0.6-0.9	0.35	0.1	0.1	0.40-0.6	0.1	0.1	0.1	0.15	Rest

###### 2)Mechanical property

Alloy	Temper	Tensile strength	Yield strength	Elongation
6063	T5	≥ 160Mpa	≥ 110Mpa	≥ 8%
	T6	≥ 205Mpa	≥ 180Mpa	≥ 8%
6061	T6	≥ 265Mpa	≥ 245Mpa	≥ 8%

#### Competitive Advantage:

##### - WHO ARE WE

1. **Top Aluminium** profile manufacturer for 20 years in China.
2. **Diverse Products** used in the fields of construction, industry and deep-processing.

##### - WHY CHOOSE US

1. **Quality Control** is put in the core position of our production.
2. **Customized Production** shows our capability in product design and process control.
3. **Perfect Customer Services** include careful packaging, quick delivery and good after-sale service.

##### - WHERE DO WE EXPORT

1. **North America:** USA, Canada.
2. **South America:** Brazil, Argentina, Chile, etc.
3. **Europe:** Spain, France, Germany, The Netherlands, Russia, etc.
4. **Aisa and Oceania:** Vietnam, Thailand, India, Australia, etc.
5. **Total 53 countries.**



 **HENTEC** Hentec Industry Co.,Ltd

 +86-13861643436  [aluminum@hentec.com.cn](mailto:aluminum@hentec.com.cn)  [aluminumextrusion-profiles.com](http://aluminumextrusion-profiles.com)

Qinfeng Road No.555 Huashi Town Jiangyin Jiangsu China (mainland) 214421