



Cylinder Pump Body Industrial Aluminium Profile , Aluminum Extruded Sections

Our Product Introduction

Basic Information

- Place of Origin: China
- Brand Name: HENTEC / KUNTAI
- Certification: ISO9001
- Minimum Order Quantity: 1 ton
- Packaging Details: Ep paper ,kraft ,pallet
- Delivery Time: 20days
- Payment Terms: T/T ,L/C
- Supply Ability: 100 000ton each month



Product Specification

- Product Name: Industrial Aluminium Profile
- Alloy: 6063,6061,6005
- Material: Aluminum
- Surface Treatment: Mill Finished,Anodized ,Electrophoretic Coated,Powder Spray Coated
- Deep Process: Milling, Drilling, Bending,Cutting
- Temper: T4, T5, T6
- Highlight: **aluminium door frame,
aluminium extruded profiles**

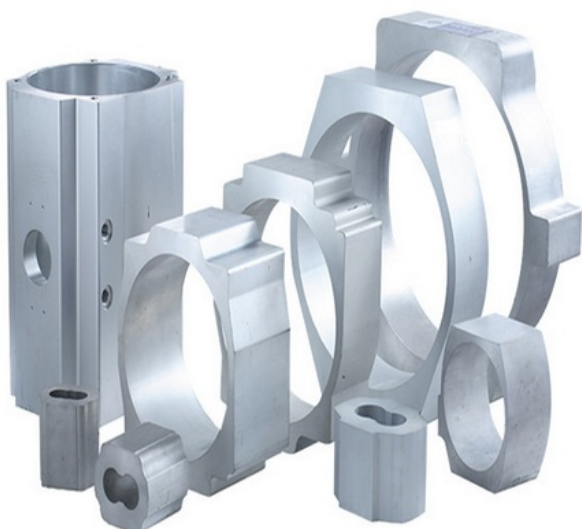
for more products please visit us on aluminumextrusion-profiles.com

Product Description

Customized Industrial Aluminium Profile For Cylinder , Pump Body Aluminum Extruded Sections

We are professional manufacturer of extrusion aluminum products with more than **15 years** !

- 1, Specification: Various size as customer's requirements
- 2, Material: A6063, A6061 and other series alu alloy
- 3, Surface treatment: anodizing , polishing, power coating, mill finish etc
- 4, Design: OEM, ODM, or design by ourselves
- 5, Equipment: CNC , Extruding Machine, Cutting Machine, Anodizing Line , Powder Painting Line



| chemical component | | | | | | | | | other element | |
|--------------------|-----------|-----------|-----------|----------|-----------|-----------|-------|-------|---------------|-------|
| | Si | Fe | Cu | Mn | Mg | Cr | Zn | Ti | simplex | total |
| 6060 | 0.30-0.60 | 0.10-0.30 | 0.10 | 0.10 | 0.35-0.60 | 0.05 | 0.15 | 0.10 | 0.05 | 0.15 |
| 6061 | 0.40-0.80 | 0.7 | 0.15-0.40 | 0.15 | 0.8-1.2 | 0.04-0.35 | 0.25 | 0.15 | 0.05 | 0.15 |
| 6063 | 0.20-0.60 | 0.35 | 0.10 | 0.10 | 0.45-0.90 | 0.10 | 0.10 | 0.10 | 0.05 | 0.15 |
| 6005A | 0.50-0.90 | 0.35 | 0.30 | 0.50 | 0.40-0.70 | 0.30 | 0.20 | 0.10 | 0.05 | 0.15 |
| 6082 | 0.70-1.30 | 0.50 | 0.10 | 0.40-1.0 | 0.6-1.2 | 0.25 | 0.20 | 0.10 | 0.05 | 0.15 |
| 6101 | 0.30-0.7 | 0.50 | 0.10 | 0.03 | 0.35-0.80 | 0.03 | 0.10 | N/A | 0.03 | 0.10 |
| 6101B | 0.30-0.6 | 0.10-0.30 | 0.05 | 0.05 | 0.35-0.6 | N/A | 0.10 | N/A | 0.03 | 0.10 |
| 6N01 | 0.5-0.9 | <0.35 | <0.35 | 0.50 | 0.4-0.8 | <0.30 | <0.25 | <0.10 | <0.05 | <0.15 |
| 6005 | 0.6-0.9 | 0.35 | 0.10 | 0.10 | 0.40-0.60 | 0.1 | 0.10 | 0.10 | 0.05 | 0.15 |

Order, payment, terms, shipment

- 1, Minimum order: 500kg per trial order 1 piece of sample free of charge provided by approval and kept for future mass production.
- 2, Sample Lead Time: 25 working days (15 days for making the tool and 10 days making the samples. Before sending the samples to customer, samples should pass strict test in our lab.) Production Lead time: it depends on customers' order quantity (30 working days after deposit).
- 3, Payment: (Can negotiate with customers, our usual practices are as follow)
- 4, Tooling: 100% prepaid by T/T.
- 5, Parts: 30% upon order confirmation and balance before delivery by T/T

Applications:

Mainly used for industrial production , such as automation equipment , enclosure of the skeleton and the companies according to their own customized mold machinery and equipment , such as assembly line conveyor , hoist, dispenser, testing equipment, shelves , etc., electronic machinery industries and clean room with a gain majority.


Competitive Advantage:

1. good quality aluminium profile with economic price
2. 15-year manufacturing experience
- 3 .ISO9000
4. ODM or OEM



 **HENTEC** Hentec Industry Co.,Ltd

 +86-13861643436

 aluminum@hentec.com.cn

 aluminumextrusion-profiles.com

Qinfeng Road No.555 Huashi Town Jiangyin Jiangsu China (mainland) 214421