



## Wear Resistance 6061- T6 Alu Profilsystem Assembly Production Line For Industry

Our Product Introduction

for more products please visit us on [aluminumextrusion-profiles.com](http://aluminumextrusion-profiles.com)

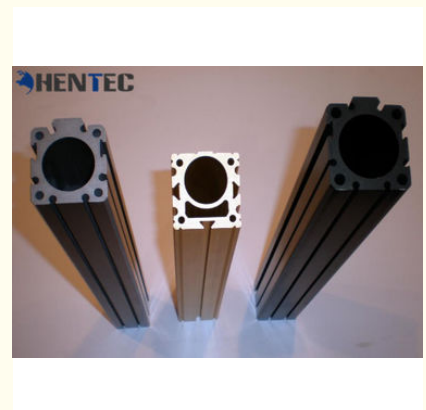
### Basic Information

- Place of Origin: China
- Brand Name: HENTEC
- Certification: CA ,CE ,ISO14001:2004, ISO9001:2000
- Minimum Order Quantity: 1 ton
- Packaging Details: Ep paper ,kraft ,pallet
- Delivery Time: 20days
- Payment Terms: T/T ,L/C
- Supply Ability: 100 000ton each month



### Product Specification

- Product Name: Industrial Aluminium Profile
- Alloy: 6063
- Material: Aluminum
- Surface Treatment: Fluorocarbon Powder Spray Coated /PVDF Paint, Drawbench, Steel Polished
- Deep Process: Milling, Drilling, Bending, Cutting
- Temper: T4, T5, T6
- Highlight: **modular aluminium profile system, aluminium extrusion frame system**



## Product Description

### Wear Resistance 6061- T6 Alu Profilsystem Assembly Production Line For Industry

Item	Aluminium extrusion profile for Industrial assembly production line
Material	Aluminium 6000 series alloy, such as 6061, 6063, 6082 etc.
Temper	T4, T5, T6 ,T66
Thickness	General profile thickness:0.8-5.0mm; Anodized protection thickness: 8-25um; Powder coating color thickness: 40-120um.
Size	3m-6m per piece, or customized.
Shape	Square, flat, round, hollow, oval, triangle, U-profile, L-profile, T-profile, H-profile, customized available.
Surface Treatment	Mill-finish, anodized, powder coated, electrophoresis, wood grain, timber, PVDF paint, polishing, brushed.
Color	Silver, champagne, black, bronze, gold, white or customized
Application	Window and door with thermal break strips, curtain wall, glass wall, furniture, ceiling, kitchen, LED strip, transportation rail, vehicle, motor housing, machine, tent, solar panel, industrial profile, decoration profile etc.
Deep Process	CNC, drilling, milling, cutting, tapping, welding, bending, assembling.
MOQ	500 kgs for each item, usually 13-15 tons for a 20GP, 25-28 tons for a 40HQ.
OEM service	Drawing, sample or design service offer by customer.
Production Capacity	2400-3000 Metric tons monthly.
Brand Name	Hentec
Certificates and Standard	ISO9001-2008/ISO 9001:2008
Guarantee	Surface color can be stable for 10-20 years indoor using.
Packing Details	Inside: pack with plastic protective film to protect each piece. Outside: wrap to bundle by waterproof craft paper or EPE film, or customized
Delivery time	Die developing and sample testing: 12-18 days . Mass production: 25-30 days after confirming sample by buyer.
FOB Port	Shanghai
Payment Terms	T/T 30% for deposit, balance before delivery.
Settlement Terms	Charge by final actual weight or by drawing theoretical weight.

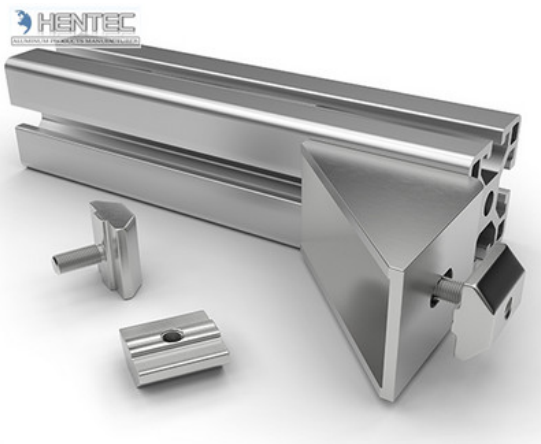


#### Description :

1. Description:6061-T6 Industrial Aluminium Profile System Assembly Production Line for Industry
2. Alloy temper: 6060/6063-T6/T5;
3. Standard: EN755, ASTM B221, DIN Standard
4. Surface treatment: Mill finishes; Anodized; Powder coated, wooden grain, polished, brushed.
5. Application: Assembly Production Line
6. Advantage:
  - 1) Pure 99.7% aluminum materials without any scrap used
  - 2) OEM welcome, we can design and cut die to meet customer's special demand
  - 3) Wonderful surface treatment, we can meet customers required on surface
  - 4) Strictly quality control process assured higher quality.
  - 5) Packing safety and convenient.

#### Applications:

Industry Aluminum profile used in cars, trains machinery ,electronics, medical and other industrial filed . In terms of hardware, machinery, electromechanical parts, solar PV products, aluminum frames are adopt as important auxiliary materials. We also have aluminum profiles for radiators, fitness machinery, buildings, lighting instrument, windpipes, oil pipelines, for instance.



## Specifications:

### 1.Primary Technical Data

#### 1)Chemical composition

Alloy	Si	Fe	Cu	Mn	Mg	Cr	Zn	Ti	Impurity	Al
6063	0.2-0.6	0.35	0.1	0.1	0.45-0.9	0.1	0.1	0.1	0.15	Rest
6061	0.4-0.8	0.7	0.15-0.4	0.15	0.8-1.2	0.04-0.35	0.25	0.15	0.15	Rest
6060	0.3-0.6	0.1-0.3	0.1	0.1	0.35-0.6	-	0.15	0.1	0.15	Rest
6005	0.6-0.9	0.35	0.1	0.1	0.40-0.6	0.1	0.1	0.1	0.15	Rest

#### 2)Mechanical property

Alloy	Temper	Tensile strength	Yield strength	Elongation
6063	T5	≥ 160Mpa	≥ 110Mpa	≥ 8%
	T6	≥ 205Mpa	≥ 180Mpa	≥ 8%
6061	T6	≥ 265Mpa	≥ 245Mpa	≥ 8%

公司图号	图 样	线密度 kg/m
HT-745		1.292
HT-746		0.786
HT-747		2.524
HT-749		0.464
HT-750		0.808
HT-751		1.616

公司图号	图 样	线密度 kg/m
HT-752		1.646
HT-753		2.952
HT-754		2.015
HT-767		1.522



**HENTEC** Hentec Industry Co.,Ltd

☎ +86-13861643436    ✉ aluminum@hentec.com.cn    🌐 aluminumextrusion-profiles.com

Qinfeng Road No.555 Huashi Town Jiangyin Jiangsu China (mainland) 214421