



Black Anodised Aluminum Heatsink Extrusion Profiles ISO Quality Assurance

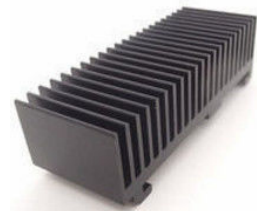
Our Product Introduction

for more products please visit us on aluminumextrusion-profiles.com

Basic Information

- Place of Origin: China
- Brand Name: HENTEC ,KUNTAI
- Certification: CA ,CE
- Minimum Order Quantity: 1 ton
- Packaging Details: Ep paper ,kraft ,pallet
- Delivery Time: 20days
- Payment Terms: T/T ,L/C
- Supply Ability: 100 000ton each month





Product Specification

- Product Name: Aluminum Heatsink Extrusion Profiles
- Alloy: 6063,6061,6005
- Material: Aluminum
- Surface Treatment: Mill Finished,Anodized ,Electrophoretic Coated,Powder Spray Coated
- Deep Process: Milling, Drilling, Bending,Cutting
- Temper: T4, T5, T6 ,T66
- Highlight: **heatsink extrusion profiles, aluminium heatsink extrusion**





Product Description

Black Anodized Aluminum Heatsink Extrusion Profiles For Led Light

Alloy:	6063	6061	6060	6005	6082		
Temper :	T4	T5	T6	T7			
Standard:	DIN	AAMA	AS	CHINAGB			
Certification:	ISO9001: 2008.						
Surface Finish:	Mill finish	Anodizing	Powder Coating	Wood Grain	Electrophoresis	Polished	Brushed
Color:	Anodizing	Silver, bronze, champagne, titanium, nickel, golden yellow, etc.					
		Anodizing thickness is up to 25um.					
	Powder Coating	White, black, bronze, grey, green, etc .					
		Powder coating thickness is more than 60um.					
	Electrophoresis	Silver, nickel, golden yellow, black, champagne, etc					
	Polishing	Silver, nickel, golden yellow, black, etc					
	Brushing	Silver, nickel, golden yellow, black, bronze, etc					
Machining:	Cutting, punching, drilling, bending, weld, mill, CNC, etc.						
OEM customized aluminium profiles are available.							

Applications:

Aluminum heat sink is widely used on Machines , cars , lighter ...

Specifications:

1. Primary Technical Data

1)Chemical composition

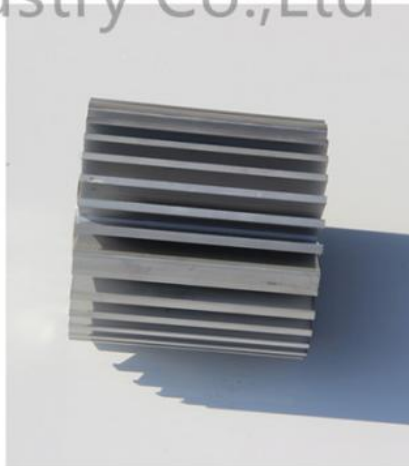
Alloy	Si	Fe	Cu	Mn	Mg	Cr	Zn	Ti	Impurity	Al
6063	0.2-0.6	0.35	0.1	0.1	0.45-0.9	0.1	0.1	0.1	0.15	Rest
6061	0.4-0.8	0.7	0.15-0.4	0.15	0.8-1.2	0.04-0.35	0.25	0.15	0.15	Rest
6060	0.3-0.6	0.1-0.3	0.1	0.1	0.35-0.6	-	0.15	0.1	0.15	Rest
6005	0.6-0.9	0.35	0.1	0.1	0.40-0.6	0.1	0.1	0.1	0.15	Rest

2) Mechanical property

Alloy	Temper	Tensile strength	Yield strength	Elongation
6063	T5	≥ 160Mpa	≥ 110Mpa	≥ 8%
	T6	≥ 205Mpa	≥ 180Mpa	≥ 8%
6061	T6	≥ 265Mpa	≥ 245Mpa	≥ 8%



Hentec Industry Co.,Ltd



Competitive Advantage:

Precision parts strictly according to customer&request drawing,packing and quality request

The most advanced CMM inspector to ensure the quality

Experienced technology engineers and well trained workers

Fast and timely delivery. Speedily&professional service

Give customer professional suggestion while in the process of customer designing to save costs.

Quality assurance in accordance with ISO9001:2008





+86-13861643436



aluminum@hentec.com.cn



aluminumextrusion-profiles.com

Qinfeng Road No.555 Huashi Town Jiangyin Jiangsu China (mainland) 214421