

Side-Hung Thin Wall Aluminum Window Extrusion Profiles With Spray Powder Coating

Our Product Introduction

for more products please visit us on aluminumextrusion-profiles.com

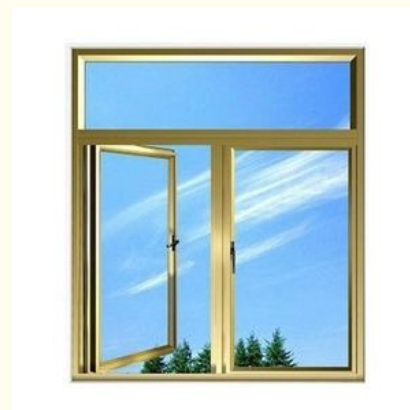
Basic Information

- Place of Origin: China
- Brand Name: HT
- Certification: CA ,CE
- Model Number: HD80
- Minimum Order Quantity: 1 ton
- Packaging Details: EP Paper ,kraft and pallet
- Delivery Time: 20days
- Payment Terms: T/T or L/C
- Supply Ability: 100 000 ton each month



Product Specification

- Product Name: Aluminum Window Extrusion Profiles
- Alloy: 6063,6061,6005
- Material: Aluminum
- Surface Treatment: Mill Finished,Anodized ,Electrophoretic Coated,Powder Spray Coated
- Deep Process: Milling, Drilling, Bending,Cutting
- Temper: T4, T5, T6 ,T66
- Highlight: **aluminum extrusion profiles, extruded aluminium profiles**



More Images



Product Description

Side-Hung Thin Wall Aluminum Window Extrusion Profiles With Spray Powder Coating

- 1.Temper: T4, T5, T6 ,T66
- 2.Material:Aluminum
- 3.Surface Treatment: Mill Finished,Anodized ,Electrophoretic coated,Powder spray coated,Fluorocarbon powder spray coated /PVDF Paint, Drawbench,Steel polished,Wood grain coated /Wooden transfer .
- 4.Deep process: Milling, Drilling, Bending,Cutting.
- 5.Application:
Used in casement doors and windows for living room, dinner room, bathroom, office room, meeting room, restaurant, hotel, etc.
- 6.Color:clear, satin, bronze, black, golden, silver, other multicolor
- 7.Alloy :6063,6061,6005 or according to customer' s choice

Description:

Technical requirements

- 1) Standard: GB/75237-2004, Q/320281/PDWD-2008
- 2) Certification: ISO9001
- 3) OEM service offered
- 4) Material: Alloy 6063, 6061 or according to customer' s choice
Temper: T3, T4, T5, T6
- 5) Fabrication: 1. Milling; 2. Drilling; 3. Bending; 4. Cutting...
- 6) Window Accessories: Using ECO friendly EPDM leather strap that would not age for a long time with a long service life.
- 7) MOQ: 1 ton. Usually 12 tons for a 20 feet container; 24 tons for a 40 feet container.
- 8) FOB Port: Shanghai Port

The surface treatment :

- 1) Mill Finished
- 2) Anodized: Silver, champagne, light bronze, dark bronze, black, light titanium, dark titanium. Usually the thickness of the film is 10 um.
- 3) Electrophoretic coated: Silver, champagne, bronze, black, light bronze, dark bronze.
- 4) Powder spray coated: Normal color, special color. Thickness: 60 to 80 um.
- 5) Fluorocarbon powder spray coated /PVDF Paint: Normal color, special color.
- 6) Drawbench
- 7) Steel polished
- 8) Wood grain coated /Wooden transfer : Imported paper ,domestic paper.

Applications:

Used in casement doors and windows for living room, dinner room, bathroom, office room, meeting room, restaurant, hotel, etc.

Specifications:

1.Primary Technical Data

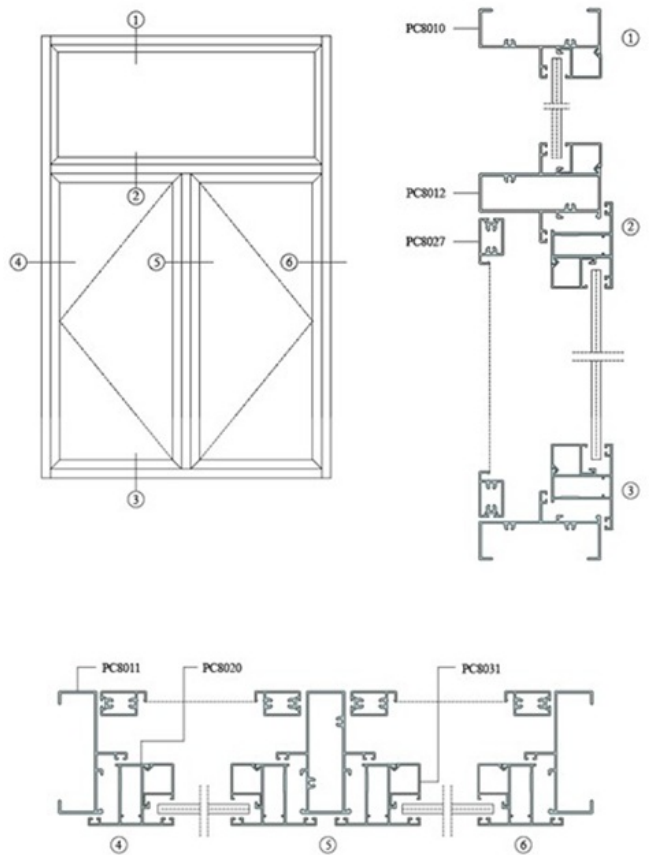
1)Chemical composition

Alloy	Si	Fe	Cu	Mn	Mg	Cr	Zn	Ti	Impurity	Al
6063	0.2-0.6	0.35	0.1	0.1	0.45-0.9	0.1	0.1	0.1	0.15	Rest
6061	0.4-0.8	0.7	0.15-0.4	0.15	0.8-1.2	0.04-0.35	0.25	0.15	0.15	Rest
6060	0.3-0.6	0.1-0.3	0.1	0.1	0.35-0.6	-	0.15	0.1	0.15	Rest
6005	0.6-0.9	0.35	0.1	0.1	0.40-0.6	0.1	0.1	0.1	0.15	Rest

2)Mechanical property

Alloy	Temper	Tensile strength	Yield strength	Elongation
6063	T5	≥ 160Mpa	≥ 110Mpa	≥ 8%
	T6	≥ 205Mpa	≥ 180Mpa	≥ 8%
6061	T6	≥ 265Mpa	≥ 245Mpa	≥ 8%

2. Specifications :



Competitive Advantage:


- 1)Engineering design and support.
- 2)Aluminium profiles deeply processing:cutting,punching,drilling,milling,and fabricating.
- 3)High Quality system, strictly inspection during production and whole inspection before package.
- 4)Good performance, product warranty for 15 years.





 **HENTEC** Hentec Industry Co.,Ltd

 +86-13861643436

 aluminum@hentec.com.cn

 aluminumextrusion-profiles.com

Qinfeng Road No.555 Huashi Town Jiangyin Jiangsu China (mainland) 214421