



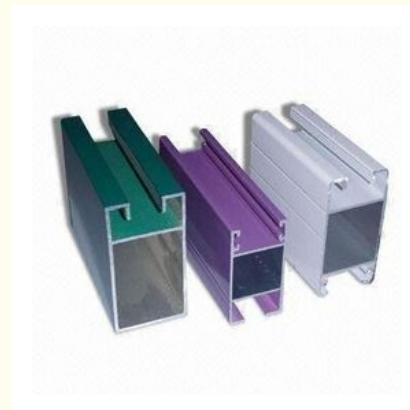
Electrophoretic Coated 6061 Aluminum Profile , Q/320281/PDWD-2008 Structural Aluminium Profiles

Our Product Introduction

for more products please visit us on aluminumextrusion-profiles.com

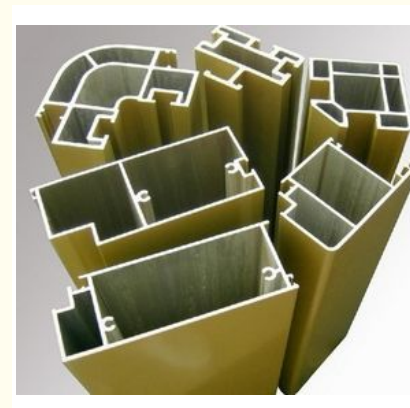
Basic Information

- Place of Origin: China
- Brand Name: HT
- Certification: CA ,CE
- Model Number: HD95SC
- Minimum Order Quantity: 1 ton
- Packaging Details: Ep paper ,kraft and pallet
- Delivery Time: 20days
- Payment Terms: T/T or L/C
- Supply Ability: 100 000ton each month

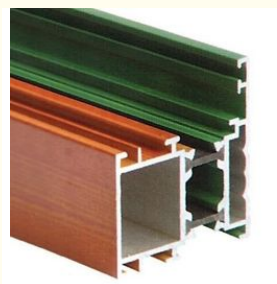


Product Specification

- Product Name: Aluminum Profile
- Alloy: 6063,6061,6005
- Surface Treatment: Mill Finished,Anodized ,Electrophoretic Coated,Powder Spray Coated, Drawbench,Steel Polished
- Material: Aluminum
- Deep Process: Milling, Drilling, Bending,Cutting
- Temper: T3, T4, T5, T6
- Highlight: **structural aluminum extrusions, aluminium structural sections**



More Images



Product Description

Electrophoretic Coated 6061 Aluminum Profile , Q/320281/PDWD-2008 Structural Aluminium Profiles

Standard: GB/75237-2004, Q/320281/PDWD-2008
 Certification: ISO9001
 OEM service offered
 Material: Alloy 6063, 6061 or according to customer' s choice
 Temper: T4, T5, T6 , T66

Description:

The surface treatment :

- 1) Mill Finished
- 2) Anodized : Silver ,champagne, light bronze, dark bronze, black, light titanium, dark titanium . Usually the thickness of the film is 10 um .
- 3) Electrophoretic coated :Silver , champagne ,bronze ,black ,light bronze ,dark bronze .
- 4) Powder spray coated :Normal color ,special color .Thickness : 60 to 80 um .
- 5) Fluorocarbon powder spray coated /PVDF Paint : Normal color ,special color .
- 6) Drawbench
- 7) Steel polished
- 8) Wood grain coated /Wooden transfer : Imported paper ,domestic paper .



Technical requirements

- 1) Standard: GB/75237-2004, Q/320281/PDWD-2008
- 2) Certification: ISO9001
- 3) OEM service offered
- 4) Material: Alloy 6063, 6061 or according to customer' s choice
 Temper: T4, T5, T6 ,T66
- 5) Fabrication: 1. Milling; 2. Drilling; 3. Bending; 4. Cutting...
- 6) MOQ : 1 ton. Usually 12 tons for a 20 feet container; 24 tons for a 40 feet container.
- 7) FOB Port: Shanghai Port

Applications:

Sliding aluminum doors, also called aluminum sliding door, are widely used as sliding closet doors, sliding cabinet doors, sliding bathroom doors, exterior sliding doors and sliding aluminum folding doors, and so on. They have beautiful appearance and smooth surface, and are wind proofing, water proofing, and anti-erosion.

Specifications:

1.Primary Technical Data

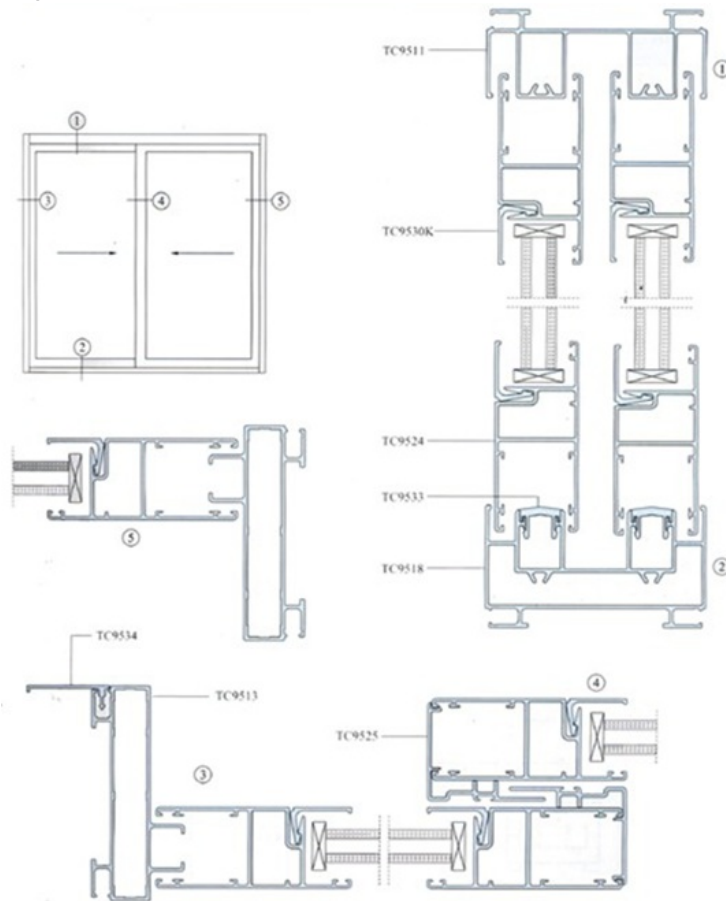
1)Chemical composition

| Alloy | Si | Fe | Cu | Mn | Mg | Cr | Zn | Ti | Impurity | Al |
|-------|---------|---------|----------|------|----------|-----------|------|------|----------|------|
| 6063 | 0.2-0.6 | 0.35 | 0.1 | 0.1 | 0.45-0.9 | 0.1 | 0.1 | 0.1 | 0.15 | Rest |
| 6061 | 0.4-0.8 | 0.7 | 0.15-0.4 | 0.15 | 0.8-1.2 | 0.04-0.35 | 0.25 | 0.15 | 0.15 | Rest |
| 6060 | 0.3-0.6 | 0.1-0.3 | 0.1 | 0.1 | 0.35-0.6 | - | 0.15 | 0.1 | 0.15 | Rest |
| 6005 | 0.6-0.9 | 0.35 | 0.1 | 0.1 | 0.40-0.6 | 0.1 | 0.1 | 0.1 | 0.15 | Rest |

2)Mechanical property

| Alloy | Temper | Tensile strength | Yield strength | Elongation |
|-------|--------|------------------|----------------|------------|
| 6063 | T5 | ≥ 160Mpa | ≥ 110Mpa | ≥ 8% |
| | T6 | ≥ 205Mpa | ≥ 180Mpa | ≥ 8% |
| 6061 | T6 | ≥ 265Mpa | ≥ 245Mpa | ≥ 8% |

2. Specifications :



Competitive Advantage:

- 1)Engineering design and support.
- 2)Aluminium profiles deeply processing:cutting,punching,drilling,milling,and fabricating.
- 3)High Quality system, strictly inspection during production and whole inspection before package.
- 4)Good performance, product warranty for 15 years.

1.Alloy :6063,6061,6005 or according to customer' s choice

2.Material:Aluminum

3.Suface Treatment: Mill Finished,Anodized ,Electrophoretic coated,Powder spray coated,Fluorocarbon powder spray coated /PVDF Paint, Drawbench,Steel polished,Wood grain coated /Wooden transfer .

4.Deep process: Milling, Drilling, Bending,Cutting.

5.Application:

Used in casement doors and windows for living room, dinner room, bathroom, office room, meeting room, restaurant, hotel, etc.

6.Color:clear, satin, bronze, black, golden, silver, other multicolor

7.Temper: T4, T5, T6 ,T66



HENTEC Hentec Industry Co.,Ltd

+86-13861643436

aluminum@hentec.com.cn

aluminumextrusion-profiles.com

Qinfeng Road No.555 Huashi Town Jiangyin Jiangsu China (mainland) 214421