



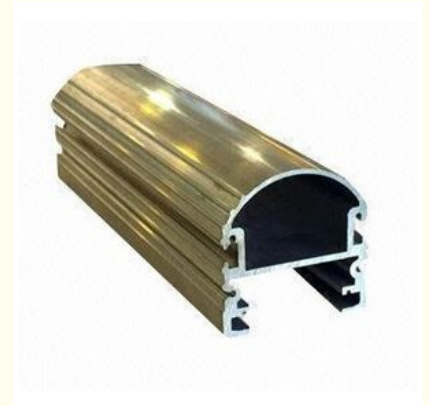
## Steel Polished Structural 6061 Aluminum Profile , Wood Grain Coated Extrusion Aluminum Profiles

Our Product Introduction

for more products please visit us on [aluminumextrusion-profiles.com](http://aluminumextrusion-profiles.com)

### Basic Information

- Place of Origin: China
- Brand Name: HT
- Certification: CA ,CE
- Model Number: HD8088
- Minimum Order Quantity: 1 ton
- Price: HD60
- Packaging Details: EP Paper ,kraft and pallet
- Delivery Time: 20days
- Payment Terms: T/T or L/C
- Supply Ability: 100 000 ton each month



### Product Specification

- Product Name: Aluminum Profile
- Alloy: 6063,6061,6005
- Surface Treatment: Fluorocarbon Powder Spray Coated /PVDF Paint, Drawbench,Steel Polished
- Material: Aluminum
- Deep Process: Milling, Drilling, Bending,Cutting
- Temper: T3, T4, T5, T6
- Highlight: **aluminium structural sections,  
structural aluminium extrusions**

## Product Description

### Polished Structural 6061 Aluminum Profile , Wood Grain Coated Extrusion Aluminum Profiles

- 1.Alloy :6063,6061,6005 or according to customer' s choice
- 2.Material:Aluminum
- 3.Surface Treatment: Mill Finished,Anodized ,Electrophoretic coated,Powder spray coated,Fluorocarbon powder spray coated /PVDF Paint, Drawbench,Steel polished,Wood grain coated /Wooden transfer .
- 4.Deep process: Milling, Drilling, Bending,Cutting.

#### Description:

#### The surface treatment :

- 1) Mill Finished
- 2) Anodized: Silver, champagne, light bronze, dark bronze, black, light titanium, dark titanium. Usually the thickness of the film is 10 um.
- 3) Electrophoretic coated: Silver, champagne, bronze, black, light bronze, dark bronze.
- 4) Powder spray coated Normal color, special color. Thickness: 60 to 80 um.
- 5) Fluorocarbon powder spray coated /PVDF Paint: Normal color, special color.
- 6) Drawbench
- 7) Steel polished
- 8) Wood grain coated /Wooden transfer: Imported paper, domestic paper.

#### Technical requirements

- 1) Standard: GB/75237-2004, Q/320281/PDWD-2008
- 2) Certification: ISO9001
- 3) OEM service offered
- 4) Material: Alloy 6063, 6061 or according to customer' s choice  
Temper: T4, T5, T6 , T66
- 5) Fabrication: 1. Milling; 2. Drilling; 3. Bending; 4. Cutting...
- 6) Window Accessories: Using ECO friendly EPDM leather strap that would not age for a long time with a long service life.
- 7)MOQ: 1 ton. Usually 12 tons for a 20 feet container; 24 tons for a 40 feet container.
- 8)FOB Port: Shanghai Port

#### Applications:

Sliding aluminum windows, also called aluminum sliding windows, are widely used as sliding closet windows, sliding cabinet windows, sliding bathroom windows, exterior sliding windows and sliding aluminum folding windows, and so on. They have beautiful appearance and smooth surface, and are wind proofing, water proofing, and anti-erosion.

#### Specifications:

##### 1.Primary Technical Data

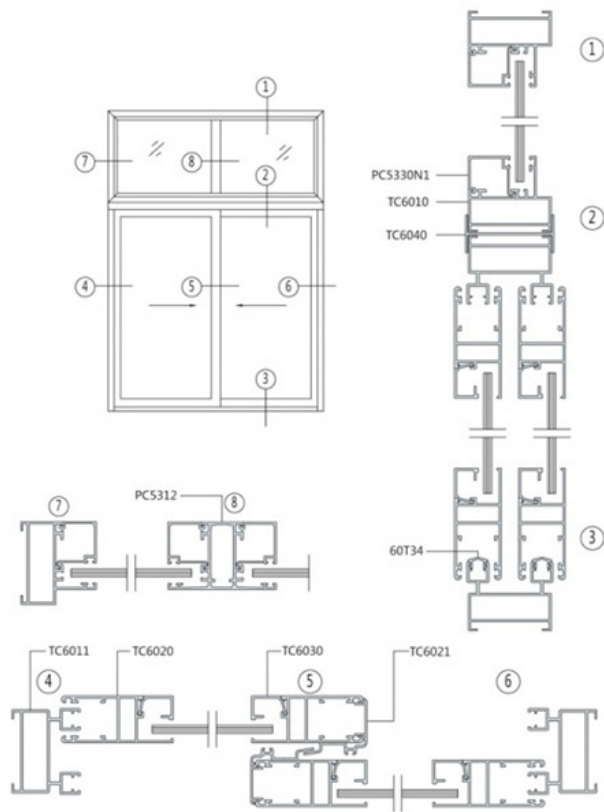
##### 1)Chemical composition

Alloy	Si	Fe	Cu	Mn	Mg	Cr	Zn	Ti	Impurity	Al
6063	0.2-0.6	0.35	0.1	0.1	0.45-0.9	0.1	0.1	0.1	0.15	Rest
6061	0.4-0.8	0.7	0.15-0.4	0.15	0.8-1.2	0.04-0.35	0.25	0.15	0.15	Rest
6060	0.3-0.6	0.1-0.3	0.1	0.1	0.35-0.6	-	0.15	0.1	0.15	Rest
6005	0.6-0.9	0.35	0.1	0.1	0.40-0.6	0.1	0.1	0.1	0.15	Rest

##### 2)Mechanical property

Alloy	Temper	Tensile strength	Yield strength	Elongation
6063	T5	≥ 160Mpa	≥ 110Mpa	≥ 8%
	T6	≥ 205Mpa	≥ 180Mpa	≥ 8%
6061	T6	≥ 265Mpa	≥ 245Mpa	≥ 8%

##### 2. Specifications :



#### Competitive Advantage:

- 1)Engineering design and support.
- 2)Aluminium profiles deeply processing:cutting,punching,drilling,milling,and fabricating.
- 3)High Quality system, strictly inspection during production and whole inspection before package.
- 4)Good performance, product warranty for 15 years.



