



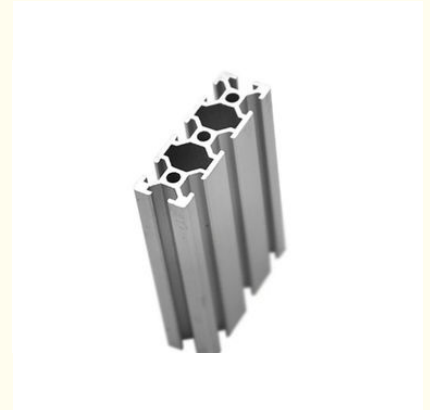
## OEM Design Silver Industrial Aluminium Profile System For Assembly Workshop

### Our Product Introduction

for more products please visit us on [aluminumextrusion-profiles.com](http://aluminumextrusion-profiles.com)

#### Basic Information

- Place of Origin: China
- Brand Name: HT
- Certification: CA ,CE ,ISO14001:2004, ISO9001:2000
- Minimum Order Quantity: 1 ton
- Packaging Details: Ep paper ,kraft ,pallet
- Delivery Time: 20days
- Payment Terms: T/T ,L/C
- Supply Ability: 100 000ton each month



#### Product Specification

- Product Name: Industrial Aluminium Profile
- Alloy: 6063,6061
- Material: Aluminum
- Surface Treatment: Mill Finished,Anodized Powder Coated, Drawbench,Steel Polished
- Deep Process: Milling, Drilling, Cutting
- Temper: T5, T6
- Highlight: **modular aluminium profile system,  
aluminium extrusion frame system**



## Product Description

### OEM Industrial Aluminum Extrusion Profiles For Assembly Workshop

We have Germany imported machines and professional engineers. In this case, we can do high technics customized aluminium alloy extrusion and profile as per your drawings or samples.

#### Product Specification

- (1). Product: Aluminum industry profile
- (2). 20 years warranty.
- (3). High corrosion resistance.
- (4). 5-10 years weather resistance.
- (5). Good wear resistance & anti-scratch.
- (6). Size customized.
- (7). Alloy temper: 6061-T6, 6063-T6, 6082-T6 etc.
- (8). Standard: EN755, ASTM B221, DIN Standard
- (9). Surface treatment: Mill finishes; Anodized; Powder coated; Wooden grain, Machine/Acid polished and etc.
- (10). Applicant: industry, construction, exhibition, car, decoration and etc.
- (11). Packing details: Shrinking film, Carton, Wooden pallet or By customer's requirements.
- (12). Delivery: 25-30 days for mass production

#### Surface treatment:

Surface treatment:							
Surface Finish:	Mill finish	Anodizing	Powder Coating	Wood Grain	Electrophoresis	Polished	Brushed
Color:	Anodizing:	Silver, bronze, champagne, titanium, nickel, golden yellow, etc. Anodizing thickness is up to 25um.					
	Powder Coating:	White, black, bronze, grey, green, etc . Powder coating thickness is more than 60um.					
	Wood Grain:	1. Italian MENPHIS transfer printing paper.					
		2. AKZO NOBEL INTERPON D1010(10 years warranty): Australia cedar, Bush cherry, Chest nut, Jarrah I, Jarrah II, Western red cedar, etc.					
		3. AKZO NOBEL INTERPON D34(5 years warranty)					
	Electrophoresis:	Silver, nickel, golden yellow, black, champagne, etc					
	Polishing	Silver, nickel, golden yellow, black, etc					
Brushing:	Silver, nickel, golden yellow, black, bronze, etc						
Machining:	Cutting, punching, drilling, bending, weld, mill, CNC, etc.						

#### Chemical Composition of aluminum alloy:

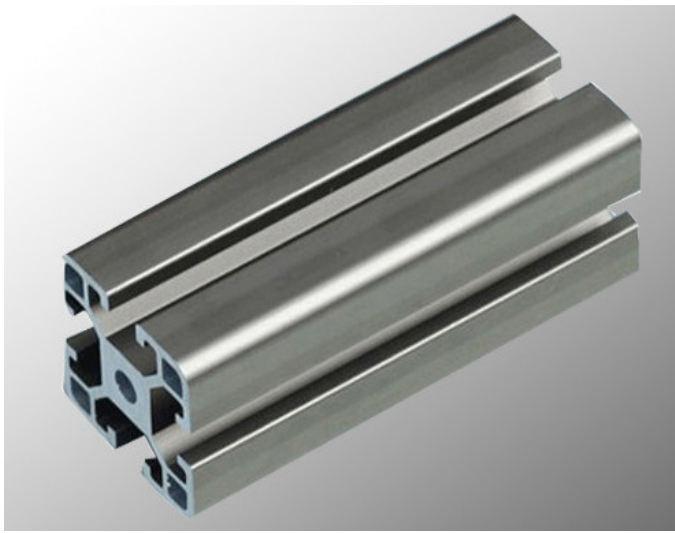
TABLE OF CHEMICAL COMPOSITION OF ALUMINUM ALLOY

Alloy	Si	Mg	Fe	Cu	Mn	Zn	Cr	Ti	Al
6063	0.2-0.6	0.45-0.9	< 0.35	< 0.1	< 0.1	< 0.1	< 0.1	< 0.1	Surplus
6061	0.4-0.8	0.8-1.2	< 0.7	0.15-0.4	< 0.15	< 0.25	0.04-0.35	< 0.15	Surplus
6005	0.5-0.9	0.4-0.7	0.35	0.3	0.50	0.2	0.3	0.1	Surplus
6082	0.7-1.3	0.6-1.2	0.5	≤0.1	0.4-1.0	≤0.2	≤0.25	< 0.1	Surplus

#### Anodizing quality:

##### ADODIZINMG QUALITY

Grade	corrosion resistance			abrasive resistance	
	CASS test		alkaline dropping test	sandtrial	
	hours	grade		Abrasion coefficient f,g/um	
AA10	16	≥ 9	≥ 50	≥ 300	
AA15	32	≥ 9	≥ 75	≥ 300	
AA20	56	≥ 9	≥ 100	≥ 300	
AA25	72	≥ 9	≥ 125	≥ 300	

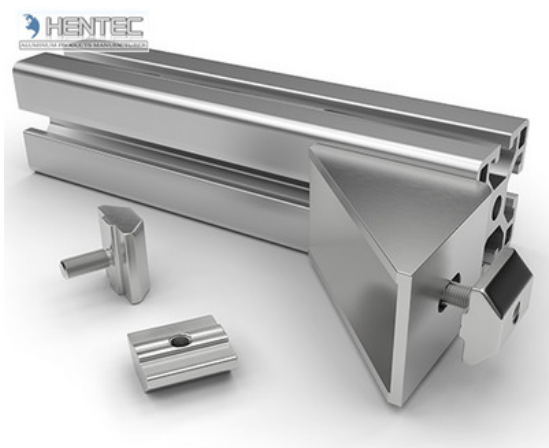


#### Description:

1. Material: 6063, 6061, 6060, etc.
2. Temper: T5 or T6
3. Finish: Mill finish, anodizing, powder coating, electrophoresis, wooden transfer or pvdf/carbon-flouride coated, polishing, brushing, sand blasting
4. Various colors: Silver, bronze, black, gold, blue, grey, champagne, bright, etc.
5. Machining: Cutting, punching, drilling, tapping, milling, bending, welding, CNC etc.
6. Various in styles and sizes:
  - A) Aluminum alloy bars: 6000 series, normal material such as 6063, 6005, 6061, 6060, special materials such as 6082 etc.
  - B) Aluminum profiles:
    - General aluminum profiles (various shapes of pipes/tubes, angles, T or U shapes etc.)
    - Industrial aluminum profiles ( TV frames, Rim for bicycles and motorcycles, Heat sink profiles, Furniture, Ladder, Guide Rail, Leisure materials, Shower Room, Solar Module Frame, Motor Shell, Pipeline Integration etc.)
    - Construction aluminum profiles
7. Certification: ISO9001, SGS, ROHS, TUV
8. Strong technical development ability, can provide high intensity and high ductility aluminum profiles, to meet customers' different requirements.
9. OEM service available, customized design available

#### Applications:

Industry Aluminum profile used in cars, trains machinery ,electronics, medical and other industrial filed . In terms of hardware, machinery, electromechanical parts, solar PV products, aluminum frames are adopt as important auxiliary materials. We also have aluminum profiles for radiators, fitness machinery, buildings, lighting instrument, windpipes, oil pipelines, for instance.



#### Specifications:

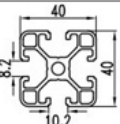
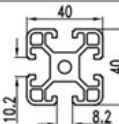
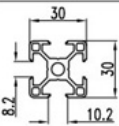
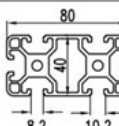
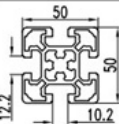
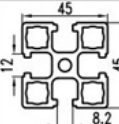
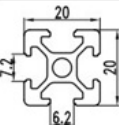
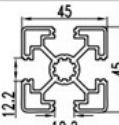
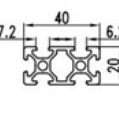
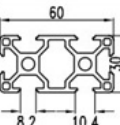
##### 1. Primary Technical Data

###### 1) Chemical composition

Alloy	Si	Fe	Cu	Mn	Mg	Cr	Zn	Ti	Impurity	Al
6063	0.2-0.6	0.35	0.1	0.1	0.45-0.9	0.1	0.1	0.1	0.15	Rest
6061	0.4-0.8	0.7	0.15-0.4	0.15	0.8-1.2	0.04-0.35	0.25	0.15	0.15	Rest
6060	0.3-0.6	0.1-0.3	0.1	0.1	0.35-0.6	-	0.15	0.1	0.15	Rest
6005	0.6-0.9	0.35	0.1	0.1	0.40-0.6	0.1	0.1	0.1	0.15	Rest

## 2)Mechanical property

Alloy	Temper	Tensile strength	Yield strength	Elongation
6063	T5	≥ 160Mpa	≥ 110Mpa	≥ 8%
	T6	≥ 205Mpa	≥ 180Mpa	≥ 8%
6061	T6	≥ 265Mpa	≥ 245Mpa	≥ 8%

公司图号	图 样	线密度 kg/m	公司图号	图 样	线密度 kg/m
HT-745		1.292	HT-752		1.646
HT-746		0.786	HT-753		2.952
HT-747		2.524	HT-754		2.015
HT-749		0.464	HT-767		1.522
HT-750		0.808			
HT-751		1.616			

## Competitive Advantage:

- 1.ISO Audited company.
- 2.Industry experience over 17 years.
- 3.Shipment of goods -More than40 countries worldwide.
- 4.Have the most convenient transport and prompt delivery.
- 5.Offer competitive price with best service.
- 6.High technical production line with top quality products.
- 7.High reputation based on best quality products.



**HENTEC** Hentec Industry Co.,Ltd

+86-13861643436

aluminum@hentec.com.cn

aluminumextrusion-profiles.com

Qinfeng Road No.555 Huashi Town Jiangyin Jiangsu China (mainland) 214421