



## OEM Aluminium Profile System Construction Aluminium Profiles For Assembly Line

Our Product Introduction

for more products please visit us on [aluminumextrusion-profiles.com](http://aluminumextrusion-profiles.com)

### Basic Information

- Place of Origin: China
- Brand Name: HENTEC
- Certification: CA ,CE ,ISO14001:2004, ISO9001:2000
- Minimum Order Quantity: 1 ton
- Packaging Details: Ep paper ,kraft ,pallet
- Delivery Time: 20days
- Payment Terms: T/T ,L/C
- Supply Ability: 100 000ton each month





### Product Specification

- Product Name: Industrial Aluminium Profile
- Alloy: 6063, 6061
- Material: Aluminum
- Surface Treatment: Mill Finished, Anodized Powder Coated, Drawbench, Steel Polished
- Deep Process: Milling, Drilling, Cutting
- Temper: T5, T6
- Highlight: **modular aluminium profile system, aluminium extrusion frame system**





## Product Description

### OEM Industrial Aluminum Extrusion Profiles For Assembly Line

We have Germany imported machines and professional engineers. In this case, we can do high technics customized aluminium alloy extrusion and profile as per your drawings or samples.

### Product Specification

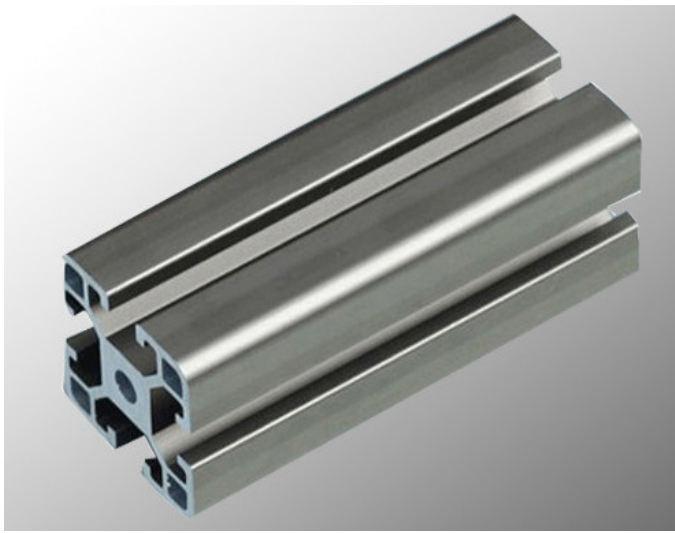
|                          |   |
|--------------------------|---|
| Item                     | Aluminum industry profile   |
| Material                 | 6061-T6, 6063-T6, 6082-T6 etc.  |
| Size / Thickness         | General profiles thickness from 0.8 to 5.0mm, length from 3m-6m or customized available;<br>Anodized protection film thickness from 8~25 um, powder coating from 40 ~ 120 um. |
| Shape                    | square, round, t shaped, rectangular, customized  |
| Surface treatment        | Mill finishes; Anodized; Powder coated; Wooden grain, Machine/Acid polished and etc .   |
| Colors                   | silver, black, blue, wood color, RAL powder coating color and so on   |
| MOQ                      | 500kgs for each item  |
| FOB Port                 | Shanghai  |
| payment terms            | T/T 30% for deposit, balance before shipping.   |
| settlement term          | Charge by final actual weight or by drawing theoretical weight.   |
| Certificate and Standard | EN755, ASTM B221, DIN Standard  |

TABLE OF CHEMICAL COMPOSITION OF ALUMINUM ALLOY

| Alloy | Si      | Mg       | Fe     | Cu       | Mn      | Zn     | Cr        | Ti     | Al      |
|-------|---------|----------|--------|----------|---------|--------|-----------|--------|---------|
| 6063  | 0.2-0.6 | 0.45-0.9 | < 0.35 | < 0.1    | < 0.1   | < 0.1  | < 0.1     | < 0.1  | Surplus |
| 6061  | 0.4-0.8 | 0.8-1.2  | < 0.7  | 0.15-0.4 | < 0.15  | < 0.25 | 0.04-0.35 | < 0.15 | Surplus |
| 6005  | 0.5-0.9 | 0.4-0.7  | 0.35   | 0.3      | 0.50    | 0.2    | 0.3       | 0.1    | Surplus |
| 6082  | 0.7-1.3 | 0.6-1.2  | 0.5    | ≤0.1     | 0.4-1.0 | ≤0.2   | ≤0.25     | < 0.1  | Surplus |

ADODIZINMG QUALITY

| Grade | corrosion resistance |       |                        | abrasive resistance                         |  |
|-------|----------------------|-------|------------------------|---|--|
|       | CASS test            |       | alkaline dropping test | sandtrial<br>Abrasion coefficient<br>f,g/um |  |
|       | hours                | grade |                        |   |  |
| AA10  | 16                   | ≥ 9   | ≥ 50                   | ≥ 300                                       |  |
| AA15  | 32                   | ≥ 9   | ≥ 75                   | ≥ 300                                       |  |
| AA20  | 56                   | ≥ 9   | ≥ 100                  | ≥ 300                                       |  |
| AA25  | 72                   | ≥ 9   | ≥ 125                  | ≥ 300                                       |  |

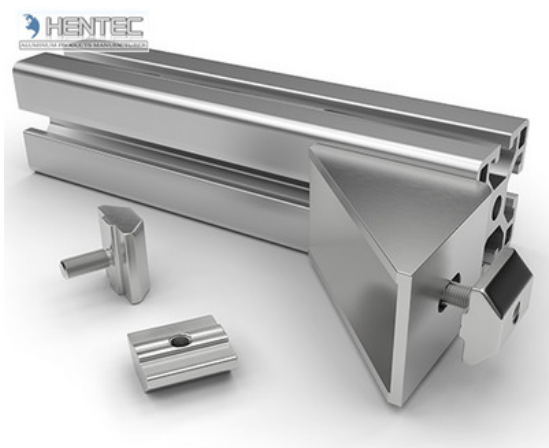


#### Description:

1. Material: 6063, 6061, 6060, etc.
2. Temper: T5 or T6
3. Finish: Mill finish, anodizing, powder coating, electrophoresis, wooden transfer or pvdf/carbon-flouride coated, polishing, brushing, sand blasting
4. Various colors: Silver, bronze, black, gold, blue, grey, champagne, bright, etc.
5. Machining: Cutting, punching, drilling, tapping, milling, bending, welding, CNC etc.
6. Various in styles and sizes:
  - A) Aluminum alloy bars: 6000 series, normal material such as 6063, 6005, 6061, 6060, special materials such as 6082 etc.
  - B) Aluminum profiles:
    - General aluminum profiles (various shapes of pipes/tubes, angles, T or U shapes etc.)
    - Industrial aluminum profiles ( TV frames, Rim for bicycles and motorcycles, Heat sink profiles, Furniture, Ladder, Guide Rail, Leisure materials, Shower Room, Solar Module Frame, Motor Shell, Pipeline Integration etc.)
    - Construction aluminum profiles
7. Certification: ISO9001, SGS, ROHS, TUV
8. Strong technical development ability, can provide high intensity and high ductility aluminum profiles, to meet customers' different requirements.
9. OEM service available, customized design available

#### Applications:

Industry Aluminum profile used in cars, trains machinery ,electronics, medical and other industrial filed . In terms of hardware, machinery, electromechanical parts, solar PV products, aluminum frames are adopt as important auxiliary materials. We also have aluminum profiles for radiators, fitness machinery, buildings, lighting instrument, windpipes, oil pipelines, for instance.



#### Specifications:

##### 1. Primary Technical Data

###### 1) Chemical composition

| Alloy | Si      | Fe      | Cu       | Mn   | Mg       | Cr        | Zn   | Ti   | Impurity | Al   |
|-------|---------|---------|----------|------|----------|-----------|------|------|----------|------|
| 6063  | 0.2-0.6 | 0.35    | 0.1      | 0.1  | 0.45-0.9 | 0.1       | 0.1  | 0.1  | 0.15     | Rest |
| 6061  | 0.4-0.8 | 0.7     | 0.15-0.4 | 0.15 | 0.8-1.2  | 0.04-0.35 | 0.25 | 0.15 | 0.15     | Rest |
| 6060  | 0.3-0.6 | 0.1-0.3 | 0.1      | 0.1  | 0.35-0.6 | -         | 0.15 | 0.1  | 0.15     | Rest |
| 6005  | 0.6-0.9 | 0.35    | 0.1      | 0.1  | 0.40-0.6 | 0.1       | 0.1  | 0.1  | 0.15     | Rest |

## 2)Mechanical property

| Alloy | Temper | Tensile strength | Yield strength | Elongation |
|-------|--------|------------------|----------------|------------|
| 6063  | T5     | ≥ 160Mpa         | ≥ 110Mpa       | ≥ 8%       |
|       | T6     | ≥ 205Mpa         | ≥ 180Mpa       | ≥ 8%       |
| 6061  | T6     | ≥ 265Mpa         | ≥ 245Mpa       | ≥ 8%       |

| 公司图号   | 图 形 | 线密度<br>kg/m | 公司图号   | 图 形 | 线密度<br>kg/m |
|--------|-----|-------------|--------|-----|-------------|
| HT-745 |     | 1.292       | HT-752 |     | 1.646       |
| HT-746 |     | 0.786       | HT-753 |     | 2.952       |
| HT-747 |     | 2.524       | HT-754 |     | 2.015       |
| HT-749 |     | 0.464       | HT-767 |     | 1.522       |
| HT-750 |     | 0.808       |        |     |             |
| HT-751 |     | 1.616       |        |     |             |

## Competitive Advantage:

- 1) Engineering design and support.
- 2) Aluminum profiles deeply processing:cutting,punching,drilling,milling,and fabricating.
- 3) High Quality system, strictly inspection during production and whole inspection before package.
- 4) Good performance, product warranty for 15 years.



