

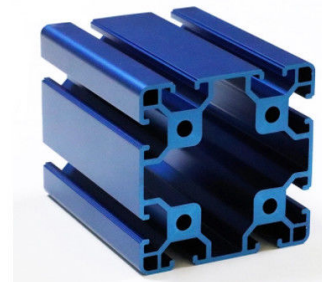
80 * 80 Industrial Aluminium Profile Assembly Line For Office Partition / Machinery

Our Product Introduction

for more products please visit us on aluminumextrusion-profiles.com

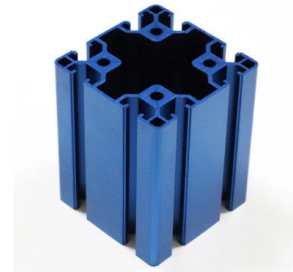
Basic Information

- Place of Origin: China
- Brand Name: HT
- Certification: CA ,CE ,ISO14001:2004, ISO9001:2000
- Minimum Order Quantity: 1 ton
- Packaging Details: Ep paper ,kraft ,pallet
- Delivery Time: 20days
- Payment Terms: T/T ,L/C
- Supply Ability: 100 000ton each month



Product Specification

- Product Name: Assembly Line
- Alloy: 6063,6061,6005
- Material: Aluminum
- Surface Treatment: Powder Spray Coated
- Deep Process: Milling, Drilling, Bending,Cutting
- Temper: T4, T5, T6
- Highlight: **modular aluminium profile system,
aluminium extrusion frame system**



Product Description

30*30 / 40 * 40 / 40 * 80 / 80 * 80 Industrial Aluminium Profile Assembly Line For Office Partition / Machinery

Description:

Product Name	Extruded aluminium profile for construction, industry Decoration and fabrication aluminium alloy industrial profiles.
Alloy	6063, 6061, 6082, 6060, 6005
Length	Upon clients' requests measurement the length .
Surface treatment	Powder coating, anodize oxidation, electrophoresis coating, wood-structure pattern.
Execute standard	ASTM B221, EN755, GB5237.
Qualification	Qunicoat, ISO 9001: 2000, China top brandquality , adopt the international standard product.
Quality control	100% quality inspect.
Equipment	Import high quality machines from developed country with 44 extruders and 2 sets 4500T extruder form USA

1. Alloy :6063,6061,6005 or according to customer' s choice
2. Material:Aluminum
3. Surface Treatment: Mill Finished,Anodized ,Electrophoretic coated,Powder spray coated,Fluorocarbon powder spray coated /PVDF Paint, Drawbench,Steel polished,Wood grain coated /Wooden transfer .
4. Deep process: Milling, Drilling, Bending,Cutting.
5. Application:
Industry Aluminum profile used in cars, trains machinery ,electronics, medical and other industrial filed . In terms of hardware, machinery, electromechanical parts, solar PV products, aluminum frames are adopt as important auxiliary materials. We also have aluminum profiles for radiators, fitness machinery, buildings, lighting instrument, windpipes, oil pipelines, for instance.
6. Color:clear, satin, bronze, black, golden, silver, other multicolor
7. Temper: T4, T5, T6 ,T66

Application :

Stock Aluminum Extrusions aluminum extrusion profile :

Mainly used for industrial production , such as automation equipment , enclosure of the skeleton and the companies according to their own customized mold machinery and equipment , such as assembly line conveyor , hoist, dispenser, testing equipment, shelves , etc., electronic machinery industries and clean room with a gain majority.

Advantages:

- 1), To facilitate the construction : a modular and multi-functional, without complex design and processing , you can quickly frame the ideal machinery coat.
- 2), Beautiful and practical : light and high rigidity, simple and beautiful appearance .
- 3), Strong scalability : The unique T-type, groove design , the installation of components without demolition profiles can be installed anywhere in the nut screws , modified equipment is simple and quick.

Main products :

Anodized aluminum, electrophoretic coating aluminum , electrostatic powder coating aluminum and oxygen barrier broken bridge aluminum , wood brick in aluminum , PVDF coating aluminum, Sliding window , casement series , every thermal bridge series , general decoration series, curtain series, industrial profile series.

Specifications:

1. Primary Technical Data

1)Chemical composition

Alloy	Si	Fe	Cu	Mn	Mg	Cr	Zn	Ti	Impurity	Al
6063	0.2-0.6	0.35	0.1	0.1	0.45-0.9	0.1	0.1	0.1	0.15	Rest
6061	0.4-0.8	0.7	0.15-0.4	0.15	0.8-1.2	0.04-0.35	0.25	0.15	0.15	Rest
6060	0.3-0.6	0.1-0.3	0.1	0.1	0.35-0.6	-	0.15	0.1	0.15	Rest
6005	0.6-0.9	0.35	0.1	0.1	0.40-0.6	0.1	0.1	0.1	0.15	Rest

2) Mechanical property

Alloy	Temper	Tensile strength	Yield strength	Elongation
6063	T5	≥ 160Mpa	≥ 110Mpa	≥ 8%
	T6	≥ 205Mpa	≥ 180Mpa	≥ 8%
6061	T6	≥ 265Mpa	≥ 245Mpa	≥ 8%

公司图号	图 样	线密度 kg/m	公司图号	图 样	线密度 kg/m
HT-745		1.292	HT-752		1.646
HT-746		0.786	HT-753		2.952
HT-747		2.524	HT-754		2.015
HT-749		0.464	HT-767		1.522
HT-750		0.808			
HT-751		1.616			

Competitive Advantage:

- 1) Engineering design and support.
- 2) Aluminum profiles deeply processing:cutting,punching,drilling,milling,and fabricating.
- 3) High Quality system, strictly inspection during production and whole inspection before package.
- 4) Good performance, product warranty for 15 years.



HENTEC Hentec Industry Co.,Ltd

+86-13861643436

aluminum@hentec.com.cn

aluminumextrusion-profiles.com

Qinfeng Road No.555 Huashi Town Jiangyin Jiangsu China (mainland) 214421