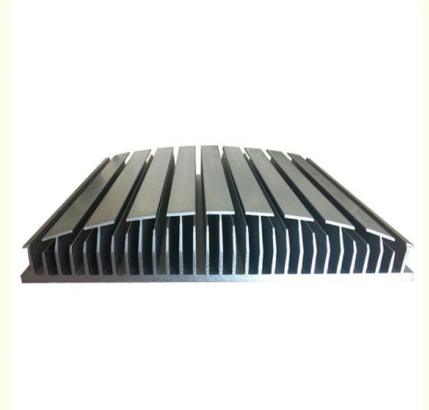


T4 6063 Alloy Radiator Aluminum Heatsink Extrusion Profiles

Basic Information

- Place of Origin: China
- Certification: CA ,CE
- Minimum Order Quantity: 1 ton
- Packaging Details: Ep paper ,kraft ,pallet
- Delivery Time: 20days
- Payment Terms: T/T ,L/C
- Supply Ability: 100 000ton each month



Product Specification

- Product Name: Aluminum Heatsink Extrusion Profiles
- Alloy: 6063,6061,6005,6060
- Material: Aluminium
- Surface Treatment: Mill Finished,Anodized ,Electrophoretic Coated,Powder Spray Coated
- Deep Process: Milling, Drilling, Bending,Cutting
- Temper: T4, T5, T6 ,T66
- Highlight: **6063 alloy aluminum heatsink extrusion profiles , radiator heat sink aluminium extrusion, t4 alloy aluminum heatsink extrusion profiles**



Product Description

6063 Aluminum Heat Sink Extrusion Profiles , Aluminum Radiator

Our Advantages:

1. 17+ years experience in providing ONE-STOP customized aluminium extrusion and machining solution; 11+ years of exporting to 40+ countries;
2. ISO: 9001:2008, RoHS, SGS, Reach, D&B
4. 100% new material
5. Competitive prices with short lead-time for both tooling and parts, because we do everything in-house
6. Effective and strong technical support (30+ engineers) and excellent sales services .
7. Sufficient production capacity (22 extrusion lines; 3+ CNC machines).
8. Efficient communication (48-hour quote lead time).

Production Information

Alloy:	6063	6061	6060	6005	6082		
Temper :	T5	T6	T4	T66			
Standard:	DIN	AAMA	AS	CHINAGB			
Certification:	ISO9001: 2008.						
Surface Finish:	Mill finish	Anodizing	Powder Coating	Wood Grain	Electrophoresis	Polished	Brushed
Color:	Anodizing:	Silver, bronze, champagne, golden , etc. Anodizing thickness is up to 25um.					
	Powder Coating:	White, black, bronze, grey, green, etc . Powder coating thickness is more than 60um.					
	Electrophoresis :	Silver, golden yellow, black, champagne, etc					
	Polishing	Silver , golden yellow, black, etc					
	Brushing:	Silver, golden yellow, black, bronze, etc					
Machining:	Cutting, punching, drilling, bending, weld, mill, CNC, etc.						
OEM customized aluminium profiles are available.							

Technology Supports

Engineering Design.

Quality Standard: China GB, according to the Drawing and the Customer's Details.

Auto CAD.

Specifications:

1. Primary Technical Data

1)Chemical composition

Alloy	Si	Fe	Cu	Mn	Mg	Cr	Zn	Ti	Impurity	Al
6063	0.2-0.6	0.35	0.1	0.1	0.45-0.9	0.1	0.1	0.1	0.15	Rest
6061	0.4-0.8	0.7	0.15-0.4	0.15	0.8-1.2	0.04-0.35	0.25	0.15	0.15	Rest
6060	0.3-0.6	0.1-0.3	0.1	0.1	0.35-0.6	-	0.15	0.1	0.15	Rest
6005	0.6-0.9	0.35	0.1	0.1	0.40-0.6	0.1	0.1	0.1	0.15	Rest

2) Mechanical property

Alloy	Temper	Tensile strength	Yield strength	Elongation
6063	T5	≥ 160Mpa	≥ 110Mpa	≥ 8%
	T6	≥ 205Mpa	≥ 180Mpa	≥ 8%
6061	T6	≥ 265Mpa	≥ 245Mpa	≥ 8%



Competitive Advantage:

We can offer professional Manufacturing and exporting service, OEM/ODM for Metal & Plastic parts in China. All the parts manufactured by CNC Lathe & Milling Machine Center.

Tag :

LED Aluminum Heat Sink

extruded aluminum heat sink

 **HENTEC** Hentec Industry Co.,Ltd

 +86-13861643436

 aluminum@hentec.com.cn

 aluminumextrusion-profiles.com

Qinfeng Road No.555 Huashi Town Jiangyin Jiangsu China (mainland) 214421