

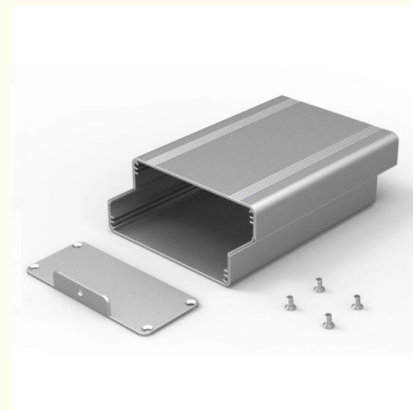
Customized 6063 Aluminum Shapes Solutions Pcb Enclosure / Barrier Protective Housing

Our Product Introduction

for more products please visit us on aluminumextrusion-profiles.com

Basic Information

- Place of Origin: China
- Certification: CA ,CE
- Minimum Order Quantity: 500pcs
- Packaging Details: Ep paper ,kraft ,pallet
- Delivery Time: 20days
- Payment Terms: T/T ,L/C
- Supply Ability: 100 000ton each month

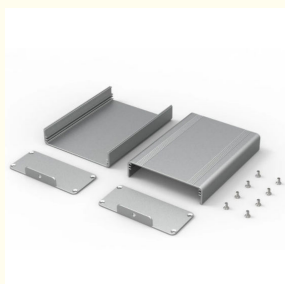


Product Specification

- Product Name: Aluminum Extrusion Profiles
- Alloy: 6063,6061,6005
- Material: Aluminum
- Surface Treatment: Mill Finished,Anodized ,Electrophoretic Coated,Powder Spray Coated
- Deep Process: Milling, Drilling, Bending,Cutting
- Temper: T4, T5, T6 ,T66
- Highlight: **pcb enclosure aluminum shapes solutions, 6063 aluminum shapes solutions, barrier protective housing extruded metal shapes**



More Images



Product Description

Customized Extruded Aluminum Pcb Enclosure / Barrier Protective Housing

1. Material: Aluminum Alloy 6063 / 6005 / 6060 /6082/6061 alloy etc , optional by customer
2. Processing: cutting, punch,stamp, bending,welding,etching,laser cutting,CNC,wire-cut..etc
3. Surface treatment: Mill finish, powder coating, anodizing, wooden grain coating, polishing, eletrophoresis, PVDF, sanding blasting, etc.
4. Equipment:extrusion machine , laser cutting machine, welding machine, bore machine,stampng machine, punching machine, bending machine.CNC
- 5.Competitive price, high quality,quick delivery.
- 6.Deep processing:Cutting, Drilling, Treading, Bending, etc.
- 7.Application:Building & Construction, Industry, Machinery, Transportation, Electrical & Energy, Machinery, Radial profiles for LED cooling, Non-standard Automation, Structure Framing, etc
- 8.OEM & ODM:Acceptable,customized Logo silkscreen accepted .
- 9.Shipping Term:EXW, FOB, C&F or others can be discussed.

Applications:

Industry Aluminum profile used in cars, trains machinery ,electronics, medical and other industrial filed . In terms of hardware, machinery, electromechanical parts, solar PV products, aluminum frames are adopt as important auxiliary materials. We also have aluminum profiles for radiators, fitness machinery, buildings, lighting instrument, windpipes, oil pipelines, for instance.

Specifications:

1. Primary Technical Data

1)Chemical composition

| Alloy | Si | Fe | Cu | Mn | Mg | Cr | Zn | Ti | Impurity | Al |
|-------|---------|---------|----------|------|----------|-----------|------|------|----------|------|
| 6063 | 0.2-0.6 | 0.35 | 0.1 | 0.1 | 0.45-0.9 | 0.1 | 0.1 | 0.1 | 0.15 | Rest |
| 6061 | 0.4-0.8 | 0.7 | 0.15-0.4 | 0.15 | 0.8-1.2 | 0.04-0.35 | 0.25 | 0.15 | 0.15 | Rest |
| 6060 | 0.3-0.6 | 0.1-0.3 | 0.1 | 0.1 | 0.35-0.6 | - | 0.15 | 0.1 | 0.15 | Rest |
| 6005 | 0.6-0.9 | 0.35 | 0.1 | 0.1 | 0.40-0.6 | 0.1 | 0.1 | 0.1 | 0.15 | Rest |

2) Mechanical property

| Alloy | Temper | Tensile strength | Yield strength | Elongation |
|-------|--------|------------------|----------------|------------|
| 6063 | T5 | ≥ 160Mpa | ≥ 110Mpa | ≥ 8% |
| | T6 | ≥ 205Mpa | ≥ 180Mpa | ≥ 8% |
| 6061 | T6 | ≥ 265Mpa | ≥ 245Mpa | ≥ 8% |

2. Specifications:

Excellent material for smooth and subtle edges.
Elegant appearance.
Surface treatment: colorful anodized or electrostatic powder coated.
Suitable for constructions and other industrial purposes.
Customized surface finishes are welcome.

Competitive Advantage:

- 1) Engineering design and support.
- 2) Aluminum profiles deeply processing:cutting,punching,drilling,milling,and fabricating.
- 3) High Quality system, strictly inspection during production and whole inspection before package.
- 4) Good performance, product warranty for 15 years.
- 5)OEM or ODM is welcome. Except our existing products we can arrange production according to customer's requirements. If you have your own designs or samples we can make molds and arrange production according to your product information.



HENTEC Hentec Industry Co.,Ltd

+86-13861643436

aluminum@hentec.com.cn

aluminumextrusion-profiles.com

Qinfeng Road No.555 Huashi Town Jiangyin Jiangsu China (mainland) 214421