



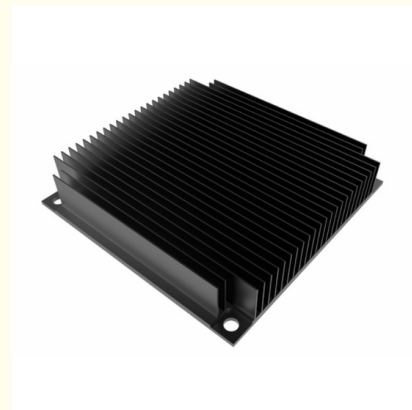
6005 Black Anodized Extruded Heat Sink Profiles For Audio Equipment

Our Product Introduction

for more products please visit us on aluminumextrusion-profiles.com

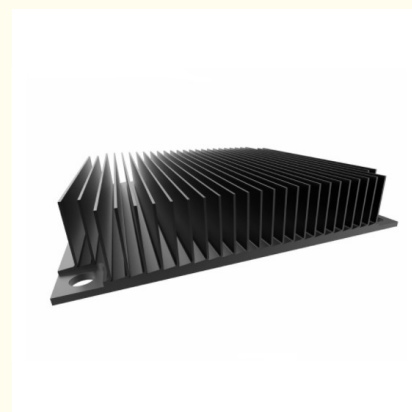
Basic Information

- Place of Origin: China
- Brand Name: HENTEC
- Certification: CA ,CE
- Minimum Order Quantity: 1 ton
- Packaging Details: Ep paper ,kraft ,pallet
- Delivery Time: 20days
- Payment Terms: T/T ,L/C
- Supply Ability: 100 000ton each month

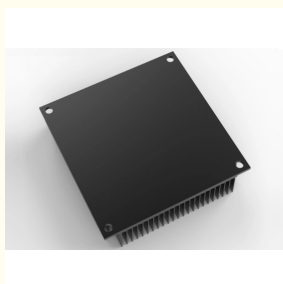


Product Specification

- Product Name: Aluminum Heatsink Extrusion Profiles
- Alloy: 6063,6061,6005
- Material: Aluminum
- Surface Treatment: Mill Finished,Anodized ,Electrophoretic Coated,Powder Spray Coated
- Deep Process: Milling, Drilling, Bending,Cutting
- Temper: T4, T5, T6 ,T66
- Highlight: 6005 extruded heat sink profiles,
audio equipment extruded heat sink profiles,
6005 aluminium extrusion heat sink profiles



More Images



Product Description

Black Anodized Aluminum Heatsink Extrusion Profiles For Audio Equipment

Description :

Name	Aluminum Extrusion frames for windows and doors
Material	According to customers demand
Temper	T4 ,T5 ,T6 ,T66
Surface	Anodize (clear, satin, bronze, black, golden, silver, other multicolor) , electrophoresis, powder coating, PVDF coating, wood grain painting, etc.
Profile type	Industry Aluminum profile used in cars, trains machinery ,trailers ,electronics, medical and other industrial filed
Machining	Cutting, punching, drilling, tapping, milling, bending, welding, CNC etc
Finish	Mill finish, anodizing, powder coating, electrophoresis, wooden transfer or pvdf/carbon-flouride coated, polishing, brushing, sand blasting
OEM service available	customized design available
Certificate	ISO9001
Payment Terms	T/T , L/C
Packing	Protective film + Compound paper/Shrink film

Applications:

Aluminum heat sink is widely used on Machines ,LED light , Audio Equipment , CPU , Inverter ...

Specifications:

1. Primary Technical Data

1)Chemical composition

Alloy	Si	Fe	Cu	Mn	Mg	Cr	Zn	Ti	Impurity	Al
6063	0.2-0.6	0.35	0.1	0.1	0.45-0.9	0.1	0.1	0.1	0.15	Rest
6061	0.4-0.8	0.7	0.15-0.4	0.15	0.8-1.2	0.04-0.35	0.25	0.15	0.15	Rest
6060	0.3-0.6	0.1-0.3	0.1	0.1	0.35-0.6	-	0.15	0.1	0.15	Rest
6005	0.6-0.9	0.35	0.1	0.1	0.40-0.6	0.1	0.1	0.1	0.15	Rest

2) Mechanical property

Alloy	Temper	Tensile strength	Yield strength	Elongation
6063	T5	≥ 160Mpa	≥ 110Mpa	≥ 8%
	T6	≥ 205Mpa	≥ 180Mpa	≥ 8%
6061	T6	≥ 265Mpa	≥ 245Mpa	≥ 8%

Competitive Advantage:

- 1, This aluminum extraction profile for heat sink offers excellent engineering design and technical support .
- 2, With the deep processing ,it will be cut ,punched ,drilled ,milled and then fabricated into the finished product .
- 3, It is guaranteed on the excellent performance for as long as 15 years .



Tag :
extruded aluminum heat sink
aluminum heatsink extrusion profiles

 **HENTEC** Hentec Industry Co.,Ltd

 +86-13861643436

 aluminum@hentec.com.cn

 aluminumextrusion-profiles.com

Qinfeng Road No.555 Huashi Town Jiangyin Jiangsu China (mainland) 214421