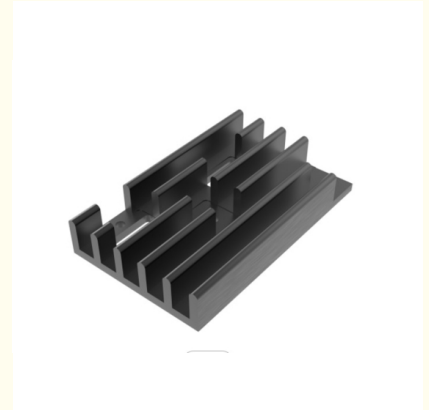




6060 Alloy Aluminum Heatsink Extrusion Profile Black Anodized Electrophoretic

Basic Information

- Place of Origin: China
- Brand Name: MetalPlus
- Certification: CA ,CE
- Minimum Order Quantity: 1 ton
- Packaging Details: Ep paper ,kraft ,pallet
- Delivery Time: 20days
- Payment Terms: T/T ,L/C
- Supply Ability: 100 000ton each month



Product Specification

- Product Name: Aluminum Heatsink Extrusion Profiles
- Alloy: 6063,6061,6005,6060,6082
- Material: Aluminum
- Surface Treatment: Mill Finished,Anodized ,Electrophoretic Coated,Powder Spray Coated
- Deep Process: Milling, Drilling, Bending,Cutting
- Temper: T4, T5, T6 ,T66
- Highlight: **6060 Alloy Aluminum Heatsink Extrusion Profile**
, Electrophoretic Milling Aluminum Heatsink Extrusion Profile
, Black Anodized Aluminum Radiator Extrusion



Product Description

Black Anodized 6060 Aluminum Heatsink Extrusion Profiles / Aluminum Radiator

We are one of the leading Aluminum extrusion profile manufactory , specialize in producing industrial aluminum profile and building aluminum profile. Such as aluminum heat sink, fan blade , aluminum profile system, windows, doors, shell, production line, radiation, special pipe, lift platform, thermal insulation windows and doors, flat open windows and doors. Sliding door and window, we are enthusiastically looking forward to serving all customers with the best service minded and appreciating your support.

1. Extrusion system

Equipped with 44 extrusion production lines, including 600 tons to 6500 tons press machine imported from Japan, Italy and Taiwan. The annual production of extrusion machine line is beyond 150 000 tons.

2. Electrophoresis & oxidation system

Two automatic horizontal oxidation production lines, which imported from German and Korea. Our Aluminium profiles meet international quality and win a great reputation from our worldwide clients.

3. Powder coating system

Equipped two powder coating lines.

Material	Aluminium alloy: 6063, 6061, 6082, 6005, 6060, T5, T6,
Section Shapes	I, U, T, C, Z, L, H, square, round, flat, hollow, t-slot or other complicated shapes by custom design.
Surface treating	anodizing, electrophoresis, nickel plating, sandblasting, power plating
Application	<ul style="list-style-type: none"> - for Window and door frames - for LED lighting Frame - for Building curtain glass walls - for Motor Shell - for Hook of LED Stage lighting - for Industry assembly lines equipment. - for Heat sinks, such as: LED lighting, Car Audio Shell, High-power LED Street lighting, LED tunnel lighting and so on. - other by custom design size and dimension
Production lines	<ul style="list-style-type: none"> - 1) 5 melting and casting production lines - 2) 44 extruding production lines(from 600tons to 6500 tons and meet different customer's demands) - 3) 2 anodizing and electrophoresis production lines - 4) 2 powder coating production lines - 5) 4 wooden grain production lines - 6) 2 heat insulation broken bridge production lines - 7) 2 wiredrawing and polishing production lines
Characteristic Services	<ul style="list-style-type: none"> - OEM Service. - Design according to the customers' requirements. - More years' professional experience in research, manufacturing - Our modern deep processing center can provide machining such as Cutting, punching, drilling, CNC Machining etc.
Quality Control	We operate the most strict quality control system, the detection is from the material, production process, to final product, and ensure the product quality and traceability.
Process	extrusion, skiving fin, stamping, die casting, precision CNC machining, drilling, milling, bending, soldering, etc
Standard	GB5237-2008 equal to EN12020-1.2(2001)
Payment	T/T: 30% for deposit, the balance will be paid before or after shipment
Packaging Detail	<ul style="list-style-type: none"> - Inside: Packed with plastic film to protect each piece - Outside: Wrap to be bundles by waterproof craft paper or EPE film. Customized request available
Lead Time	<ul style="list-style-type: none"> - Die Developing and Sample testing: 10-12 days. - Mass Production: 15-25days. It depend on your quantity.

Alloy	Si	Fe	Cu	Mn	Mg	Cr	Zn	Ti	Impurity	Al
6063	0.2-0.6	0.35	0.1	0.1	0.45-0.9	0.1	0.1	0.1	0.15	Rest
6061	0.4-0.8	0.7	0.15-0.4	0.15	0.8-1.2	0.04-0.35	0.25	0.15	0.15	Rest
6060	0.3-0.6	0.1-0.3	0.1	0.1	0.35-0.6	-	0.15	0.1	0.15	Rest
6005	0.6-0.9	0.35	0.1	0.1	0.40-0.6	0.1	0.1	0.1	0.15	Rest

Order, payment, terms, shipment

1, Minimum order: 500 kg per trial order 1 piece of sample free of charge provided by approval and kept for future mass production.

2, Sample Lead Time: 25 working days(15 days for making the tool and 10 days making the samples. Before sending the samples to customer, samples should pass strict test in our lab.)Production Lead time: it depends on customers' order quantity (30 working days after deposit).

3, Payment :30% T/T in advance the balance after the copy of BOL .

Applications:

1. Computer files: computer mainboard
2. Home appliances: pico projector, electronic refrigerator, red wine cooler, LASER TV, LCD TV, LED panel, Sound, Air condition, induction cooker, etc.
3. LED lighting: stage light, high bay light, down light, street light, automobile lamp ,etc.
4. Machines: Industry/Medical/Military machines

Specifications:**1. Primary Technical Data**

1) Chemical composition

2) Mechanical property

Alloy	Temper	Tensile strength	Yield strength	Elongation
6063	T5	≥ 160Mpa	≥ 110Mpa	≥ 8%
	T6	≥ 205Mpa	≥ 180Mpa	≥ 8%
6061	T6	≥ 265Mpa	≥ 245Mpa	≥ 8%

Competitive Advantage:

- 1) low price and high quality; High Quality CNC machining / extrusion / forging / die casting aluminum heat sinks
- 2) Small orders accepted;
- 3) Closely tolerance;

**Tag :****extruded aluminum heat sink****aluminum heatsink extrusion profiles** **Hentec Industry Co.,Ltd** +86-13861643436 aluminum@hentec.com.cn aluminumextrusion-profiles.com

Qinfeng Road No.555 Huashi Town Jiangyin Jiangsu China (mainland) 214421