



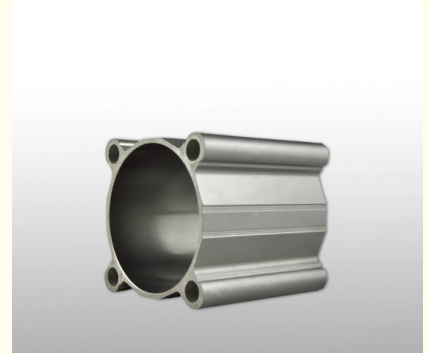
T4 Anodized Industrial Aluminum Profile AAMA AS Milling Drilling

Our Product Introduction

for more products please visit us on aluminumextrusion-profiles.com

Basic Information

- Place of Origin: China
- Certification: SGS
- Minimum Order Quantity: 1 ton
- Packaging Details: Ep paper ,kraft ,pallet
- Delivery Time: 20days
- Payment Terms: T/T ,L/C
- Supply Ability: 100 000ton each month



Product Specification

- Product Name: Industrial Aluminium Profile
- Alloy: 6063,6061,6005
- Material: Aluminum
- Surface Treatment: Mill Finished,Anodized ,Electrophoretic Coated,Powder Spray Coated
- Deep Process: Milling, Drilling, Bending,Cutting
- Temper: T4, T5, T6 ,T66
- Highlight: **T4 Anodized Industrial Aluminum Profile, AAMA AS Industrial Aluminum Profile, Milling Drilling Aluminum Cylinder Profile**



More Images



Product Description

Anodized Industrial Aluminum Profile / Aluminum Cylinder Profile

Alloy:	6063	6061	6060	6005	6082
Temper :	T5	T6	T4	T66	
Standard:	DIN	AAMA	AS		
Certification:	ISO9001: 2008.				
Surface Finish:	Mill finish	Anodizing	Powder Coating	Polished	Brushed
Color:	Anodizing:	Silver, bronze, champagne, titanium, nickel, golden yellow, etc.			
		Anodizing thickness is up to 25um.			
	Powder Coating:	White, black, bronze, grey, green, etc .			
		Powder coating thickness is more than 60um.			
	Electrophoresis:	Silver, nickel, golden yellow, black, champagne, etc			
	Polishing	Silver, nickel, golden yellow, black, etc			
	Brushing:	Silver, nickel, golden yellow, black, bronze, etc			
Machining:	Cutting, punching, drilling, bending, weld, mill, CNC, etc.				
OEM customized aluminium profiles are available.					

Order,payment,terms,shipment

- 1, Minimum order: 500kg per trial order 1 piece of sample free of charge provided by approval and kept for future mass production.
- 2, Sample Lead Time: 25 working days(15 days for making the tool and 10 days making the samples. Before sending the samples to customer, samples should pass strict test in our lab.)Production Lead time: it depends on customers' order quantity (30 working days after deposit).
- 3, Payment: L/C ,T/T

Applications:

Aluminum extrusion profiles we supply: For windows ,doors ,fence , screen,Louver, Curtain Wall,handrail,partition ,sunroom ,wardrobe, solar panel frames, exhibit shelf profile, LED Frames, production facility etc.

Competitive Advantage:

1. good quality aluminium profile with economic price
2. 15-year manufacturing experience
3. ISO9000
4. ODM or OEM



FAQ For Saving Your Precious Time!

Q1:What's the thickness for anodizing?Can you do 15um?

A:Our normal thickness is about 10 um.Yes, we can do 15um and above.

Q2:What color you can do for powder coating?The thickness for powder coat?

A:We can do any color for powder coat as long as you can provide the color sample.Our normally powder coating thickness is 60-80um.

Q3:What color you can do for wood grain?

A:Our most popular colors are Western Red Cedar, Australia Cedar, Jarrah I, Jarrah II, Chestnut, Bush Cherry, Bush Wood, Western Wood, Snow Gum, etc.If you need any other colors, we can do according to the color samples you provide.

Q4:How's the weather resistance for wood grain finish D1010?

A:(1).Powder:Akzo Noble Interpon D1010.

(2).Wood grain film:Italian Memphis.

(3).Standard complied:American AAMA Standard.2603

(4).UV test:1000 hours.

(5).Salt spraying test:1000 hours.

(6).Normal weather:10 years color guarantee.

Q5:What certification do you have?What's your standard?

A:We have ISO certification.Our standard is DIN, AAMA, AS/NZS, China GB.

Q6:What's the delivery time for samples and mass production?

A:(1).2-3 weeks to make the new moulds and make free samples.

(2).3-4 weeks after receipt of deposit and confirmation of the order.