



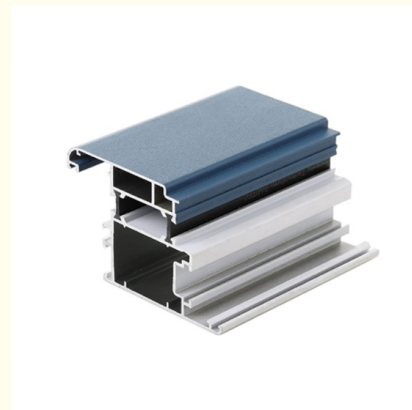
## Mill Finished Aluminum Window Extrusion Profiles T66 Alloy 6063

Our Product Introduction

for more products please visit us on [aluminumextrusion-profiles.com](http://aluminumextrusion-profiles.com)

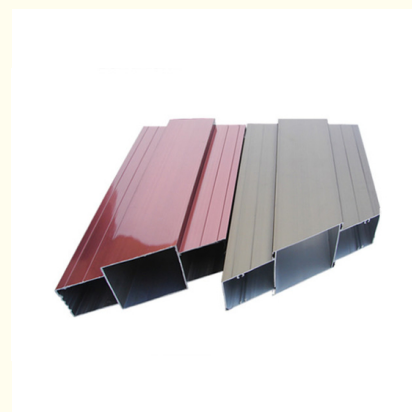
### Basic Information

- Place of Origin: China
- Brand Name: MetalPlus
- Certification: CA ,CE
- Minimum Order Quantity: 1 ton
- Packaging Details: EP Paper ,kraft and pallet
- Delivery Time: 20days
- Payment Terms: T/T or L/C
- Supply Ability: 100 000 ton each month

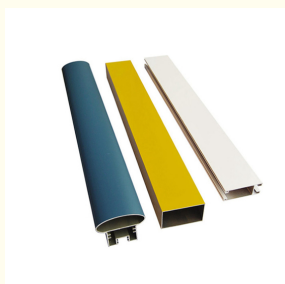


### Product Specification

- Product Name: Aluminum Window Profiles
- Alloy: 6063,6061
- Material: Aluminium Alloy
- Surface Treatment: Mill Finished,Anodized ,Electrophoretic Coated,Powder Spray Coated
- Deep Process: Milling, Drilling, Bending,Cutting
- Temper: T4, T5, T6,T66
- Highlight: **Mill Finished Aluminum Window Extrusion Profiles**  
**, T66 Aluminum Window Extrusion Profiles,**  
**Alloy 6063 Construction Aluminum Profile**



### More Images



## Product Description

### Powder Painting Aluminum Window Extrusion Profiles / Construction Aluminum Profile

Description	aluminum windows/door profile
Material Thickness(t)	t=1.0 / 1.2 / 1.4 or customized
Material	6063, 6061, 6005, 6060
Temper	T5, T6
Color	Green, Grey, Black, White, (RAL series) etc.
Surface Treatment	mill finish, sandblasting, anodizing, electrophoresis, polishing, power coating, PVDF coating, wood transfer, etc.
Shape	Square, Oval, Round, Flat, Oval, and according to customer's drawing.
Length	Normal length=6m or in customer's order
Usage	Building, Production Line, Decoration, Industrial, Transportation, Door and window, etc.
Package	1. Pearl cotton foam for each aluminum profile ; 2. Wrap with shrink film exterior; 3. Packed according to customer request.
Deep Processing Ability	Drilling, Bending, Aluminum profile fabrication, Precise cutting, ect.

### Technical requirements

- 1) Standard: GB/75237-2004, Q/320281/PDWD-2008
- 2) Certification: ISO9001
- 3) OEM service offered
- 4) Material: Alloy 6063, 6061 or according to customer's choice  
Temper: T4, T5, T6, T66
- 5) Fabrication: 1. Milling; 2. Drilling; 3. Bending; 4. Cutting...
- 6) Window Accessories: Using ECO friendly EPDM leather strap that would not age for a long time with a long service life.
- 7) MOQ: 1 ton. Usually 12 tons for a 20 feet container; 24 tons for a 40 feet container.
- 8) FOB Port: Shanghai Port

### Applications:

Hotel | Home | Commercial Building | Closet | Bathroom | Curtain Wall | Industry | And Others

### Specifications:

#### 1.Primary Technical Data

##### 1)Chemical composition

Alloy	Si	Fe	Cu	Mn	Mg	Cr	Zn	Ti	Impurity	Al
6063	0.2-0.6	0.35	0.1	0.1	0.45-0.9	0.1	0.1	0.15	0.15	Rest
6061	0.4-0.8	0.7	0.15-0.4	0.15	0.8-1.2	0.04-0.35	0.25	0.15	0.15	Rest
6060	0.3-0.6	0.1-0.3	0.1	0.1	0.35-0.6	-	0.15	0.1	0.15	Rest
6005	0.6-0.9	0.35	0.1	0.1	0.40-0.6	0.1	0.1	0.1	0.15	Rest

##### 2)Mechanical property

Alloy	Temper	Tensile strength	Yield strength	Elongation
6063	T5	≥ 160Mpa	≥ 110Mpa	≥ 8%
	T6	≥ 205Mpa	≥ 180Mpa	≥ 8%
6061	T6	≥ 265Mpa	≥ 245Mpa	≥ 8%

### Competitive Advantage:

1. 22 years' experiences of manufacturing, 12 years' exporting experiences .
2. STRONG R&D: Help customers finalize the design, strong tool design ability, excellent pressing and surface treatment technology.
3. Strict quality management: ISO Administration system.
4. 24 hours on-line communication. Professional, Patient, Flexible.
5. High capacity of manufacturing and wide range of products.
6. Be able to provide secondary fabricating.
7. Small order is accepted.
8. Be able to provide one-stop supply solution.
9. Multiple payment methods: TT, LC.



 **HENTEC** Hentec Industry Co.,Ltd

 +86-13861643436

 [aluminum@hentec.com.cn](mailto:aluminum@hentec.com.cn)

 [aluminumextrusion-profiles.com](http://aluminumextrusion-profiles.com)

Qinfeng Road No.555 Huashi Town Jiangyin Jiangsu China (mainland) 214421