



CE Certification Aluminum Rectangular Tubing Anodized With Powder Coated

Our Product Introduction

Basic Information

- Place of Origin: China
- Brand Name: HT
- Certification: CA ,CE
- Minimum Order Quantity: 1 ton
- Packaging Details: Ep paper ,kraft ,pallet
- Delivery Time: 20days
- Payment Terms: T/T ,L/C
- Supply Ability: 100 000ton each month



Product Specification

- Product Name: Aluminum Extrusion Rectangular Tube
- Alloy: 6063,6061,6005
- Material: Aluminum
- Surface Treatment: Mill Finished,Anodized etc
- Temper: T4, T5, T6 ,T66
- Application: Buildings,commercial,industrial
- Highlight: **construction aluminium profile, aluminium profile extrusion**

for more products please visit us on aluminumextrusion-profiles.com

Product Description

6061 T6 Aluminum Rectangular Tubing Anodized With Powder Coated

Temper: T4, T5, T6, T66
aluminium rectangular tube
Material:6063,6061
Mill finish,anodized,powder coated
Cut,punch,drill
ISO9001,SGS,ROHS

Description:

| | |
|--------------|---|
| Item | Aluminum Extrusion Rectangular Tube with CNC Machining |
| Material | Alloy 6063, 6061 or according to customer's choice |
| Temper | T3, T4, T5, T6 |
| Surface | Anodize (clear, satin, bronze, black, golden, silver, other multicolor), electrophoresis, powder coating, PVDF coating, wood grain painting, etc. |
| MOQ | 1 ton. Usually 12 tons for a 20 feet container; 24 tons for a 40 feet container. |
| Profile type | Industry Aluminum profile used in cars, trains machinery, trailers, electronics, medical and other industrial filed. |
| Machining | 1. milling; 2. Drilling; 3. Bending; 4. Cutting ... |
| Moulding | 1. Using our moulds, free; 2. Using customer's drawing, opening mould fee need to be paid. |
| Certificate | ISO14001:2004, ISO9001:2000 |
| FOB Port | Shanghai, etc. |

Applications:

Industry Aluminum profile used in cars, trains machinery, electronics, medical and other industrial filed. In terms of hardware, machinery, electromechanical parts, solar PV products, aluminum frames are adopt as important auxiliary materials. We also have aluminum profiles for radiators, fitness machinery, buildings, lighting instrument, windpipes, oil pipelines, for instance.

Specifications:

1. Primary Technical Data

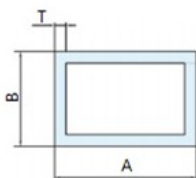
1) Chemical composition

| Alloy | Si | Fe | Cu | Mn | Mg | Cr | Zn | Ti | Impurity | Al |
|-------|---------|---------|----------|------|----------|-----------|------|------|----------|------|
| 6063 | 0.2-0.6 | 0.35 | 0.1 | 0.1 | 0.45-0.9 | 0.1 | 0.1 | 0.1 | 0.15 | Rest |
| 6061 | 0.4-0.8 | 0.7 | 0.15-0.4 | 0.15 | 0.8-1.2 | 0.04-0.35 | 0.25 | 0.15 | 0.15 | Rest |
| 6060 | 0.3-0.6 | 0.1-0.3 | 0.1 | 0.1 | 0.35-0.6 | - | 0.15 | 0.1 | 0.15 | Rest |
| 6005 | 0.6-0.9 | 0.35 | 0.1 | 0.1 | 0.40-0.6 | 0.1 | 0.1 | 0.1 | 0.15 | Rest |

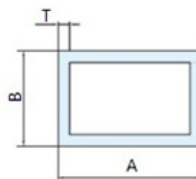
2) Mechanical property

| Alloy | Temper | Tensile strength | Yield strength | Elongation |
|-------|--------|------------------|----------------|------------|
| 6063 | T5 | ≥ 160Mpa | ≥ 110Mpa | ≥ 8% |
| | T6 | ≥ 205Mpa | ≥ 180Mpa | ≥ 8% |
| 6061 | T6 | ≥ 265Mpa | ≥ 245Mpa | ≥ 8% |

2. Specifications:



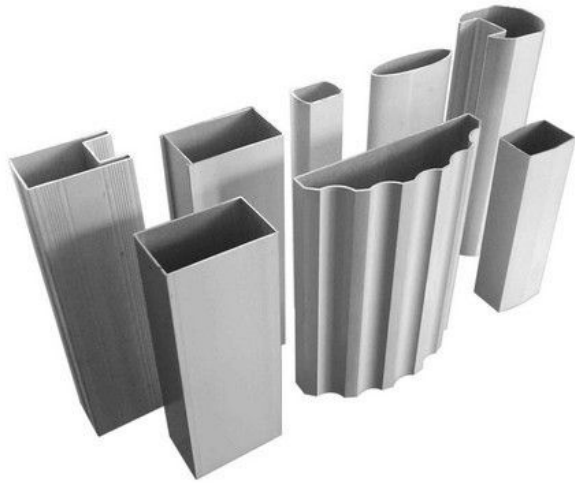
| NAME | A(mm) | B(mm) | T(mm) | EST.WEIGHT(kg/m) |
|--------|-------|-------|-------|------------------|
| L04239 | 12 | 12 | 1.5 | 0.171 |
| L04184 | 12.7 | 12.7 | 1.65 | 0.198 |
| L04210 | 15.88 | 15.88 | 1.17 | 0.187 |
| L04111 | 16 | 6 | 1 | 0.114 |
| L0435 | 19 | 16 | 1.2 | 0.228 |
| L04144 | 19 | 19 | 1.55 | 0.317 |
| L04112 | 20 | 6 | 1 | 0.148 |
| L04240 | 20 | 12 | 1 | 0.171 |
| L0451 | 20 | 20 | 1.2 | 0.245 |
| L0417 | 20 | 20 | 1.8 | 0.355 |
| L04127 | 21 | 15 | 2 | 0.346 |
| L0431 | 22 | 16.5 | 1.2 | 0.253 |
| L0472 | 22 | 20 | 2 | 0.430 |
| L04206 | 25 | 16 | 2.1 | 0.418 |
| L0430 | 25 | 25 | 1.2 | 0.310 |
| L04141 | 25 | 25 | 2 | 0.524 |
| L0470 | 25.4 | 16 | 1.2 | 0.263 |
| L04142 | 25.4 | 25.4 | 1.55 | 0.421 |
| L04126 | 29 | 12.5 | 1.2 | 0.267 |
| L0480 | 29 | 29 | 1.2 | 0.390 |
| L04197 | 30 | 10 | 1 | 0.206 |
| L04207 | 30 | 18 | 2 | 0.475 |
| L0415 | 30 | 20 | 1.2 | 0.310 |
| L0415D | 30 | 20 | 1.5 | 0.406 |
| L0417 | 30 | 20 | 2 | 0.499 |
| L04219 | 30 | 24.5 | 2.5 | 0.668 |
| L04208 | 30 | 29 | 2 | 0.594 |
| L0461 | 30 | 30 | 1.1 | 0.345 |
| L0453 | 30 | 30 | 1.5 | 0.492 |
| L0473 | 30 | 30 | 2 | 0.635 |
| L04186 | 30 | 30 | 3 | 0.879 |
| L04200 | 32 | 23.5 | 2 | 0.556 |
| L04217 | 32 | 32 | 2 | 0.650 |
| L04155 | 33.34 | 25.4 | 1.59 | 0.503 |
| L04236 | 34 | 15 | 1.2 | 0.303 |
| L0426 | 35 | 28 | 1.5 | 0.488 |
| L04149 | 35.81 | 35.81 | 1.27 | 0.473 |
| L04220 | 36.4 | 20 | 1.2 | 0.352 |
| L04235 | 38 | 18 | 1.2 | 0.349 |
| L0411 | 38 | 25 | 1 | 0.331 |
| L0408 | 38 | 25 | 1.2 | 0.394 |



| NAME | A(mm) | B(mm) | T(mm) | EST.WEIGHT(kg/m) |
|--------|-------|-------|-------|------------------|
| JY1306 | 60 | 34 | 1.2 | 0.596 |
| L0476 | 60 | 40 | 2.5 | 1.336 |
| L04260 | 60 | 50 | 3 | 1.685 |
| L0418 | 60 | 60 | 1.2 | 0.765 |
| L04225 | 60 | 60 | 1.4 | 0.889 |
| L04182 | 60 | 60 | 1.8 | 1.192 |
| L0418D | 60 | 60 | 2 | 1.318 |
| L0432 | 65 | 25 | 1.4 | 0.662 |
| L04139 | 65 | 40 | 1.2 | 0.701 |
| L0487 | 65 | 65 | 3 | 2.016 |
| L0444 | 70 | 8 | 1.2 | 0.531 |
| L0478 | 70 | 25 | 1.2 | 0.651 |
| L04234 | 70 | 30 | 1.0 | 0.531 |
| L04175 | 70 | 34 | 1.3 | 0.714 |
| L04101 | 70 | 50 | 1.2 | 0.796 |
| L0407 | 70 | 65 | 2 | 1.420 |
| L0483 | 72 | 72 | 1.4 | 1.148 |
| L0404 | 76 | 25 | 1.2 | 0.693 |
| L0404D | 76 | 25 | 1.4 | 0.745 |
| L0405 | 76 | 44 | 1.2 | 0.827 |
| L0405D | 76 | 44 | 1.4 | 0.889 |
| L0462 | 76 | 44 | 2 | 1.648 |
| L04196 | 76 | 76 | 1.4 | 1.132 |
| L0455 | 76 | 76 | 2 | 1.685 |
| L04124 | 76.2 | 25.4 | 3 | 1.554 |
| L04122 | 78.5 | 25 | 1.4 | 0.791 |
| L04187 | 80 | 20 | 1 | 0.532 |
| L0423 | 80 | 25 | 1.2 | 0.667 |
| L0423D | 80 | 25 | 1.5 | 0.883 |
| L0490 | 80 | 25 | 2 | 1.139 |
| L04215 | 80 | 40 | 3 | 1.854 |
| L0424 | 80 | 44 | 1.2 | 0.791 |
| L0466 | 80 | 44 | 3 | 2.039 |
| L04221 | 80 | 50 | 2.5 | 1.694 |
| L04262 | 80 | 50 | 4 | 2.635 |
| L0491 | 80 | 51 | 2 | 1.446 |
| L0477 | 80 | 60 | 2.5 | 1.900 |
| L04123 | 80 | 60 | 4 | 3.005 |
| L04185 | 80 | 60 | 4.5 | 3.196 |
| L04229 | 80 | 80 | 3 | 2.629 |
| L04227 | 80 | 80 | 5 | 4.065 |

Competitive Advantage:

- 1) Engineering design and support.
- 2) Aluminium profiles deeply processing:cutting,punching,drilling,milling,and fabricating.
- 3) High Quality system, strictly inspection during production and whole inspection before package.
- 4) Good performance, product warranty for 15 years.



 **HENTEC** Hentec Industry Co.,Ltd

 +86-13861643436

 aluminum@hentec.com.cn

 aluminumextrusion-profiles.com

Qinfeng Road No.555 Huashi Town Jiangyin Jiangsu China (mainland) 214421