



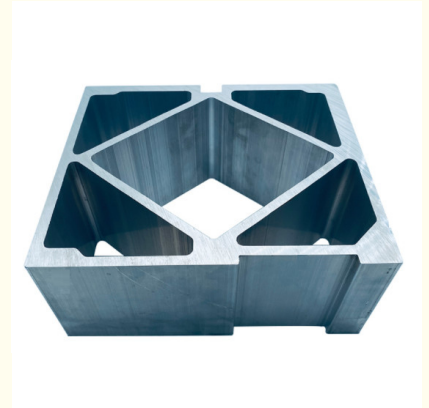
## Structural Aluminum Beam / Industrial Aluminium Profile Steel Polished Surface Treatment

Our Product Introduction

for more products please visit us on [aluminumextrusion-profiles.com](http://aluminumextrusion-profiles.com)

### Basic Information

- Place of Origin: China
- Brand Name: MetalPlus
- Certification: CA ,CE ,ISO14001:2004, ISO9001:2000
- Minimum Order Quantity: 1 ton
- Packaging Details: Ep paper ,kraft ,pallet
- Delivery Time: 20days
- Payment Terms: T/T ,L/C
- Supply Ability: 100 000ton each month



### Product Specification

- Product Name: Industrial Aluminium Profile
- Alloy: 6063,6061,6005
- Material: Aluminum
- Surface Treatment: Anodized Powder Coated, Drawbench,Steel Polished
- Deep Process: Milling, Drilling, Cutting
- Temper: T5, T6
- Highlight: **Industrial Aluminium Steel extrusion,  
Polished Surface Aluminum extrusion,  
Structural Aluminum Beam extrusion**

## Product Description

### Structural Aluminum Beam / Industrial Aluminium Profile Steel polished Surface Treatment

Grade	6000 Series
Application	aluminium profile
Alloy Or Not	Is Alloy
Brand Name	MetalPlus
Product name	OEM Aluminum Profile
Color	OEM;All color
Grade	6063,6061,6005,6005A,6082
Temper	T4,T5,T6
More Processing	Punching, Milling, Drilling, Tapping, Bending, Cutting, Welding, Assembling or customized
Surface Finish	Powder Coating, Anodizing, Mill finish,Sandblasting , Polishing,Brushing, Polishing, Electric-plating,Nickel Plating, Chrome Plating etc.
Wall Thickness	0.8 ~ 5.0mm ( Aluminum Profile) 50-150 um(Hard Anodic Oxidation) 8~25 um ( Anodized surface)40 ~ 120 um ( Powder Coating)
OEM	Silkscreening,Engraving,Laser Printing,Cut-out making, Custom Packaging Box etc.
Industries Served	Aerospace, Automotive, Agriculture, Construction, Electrical, Electronic, Home Appliance, Medical,Marine, Machinery, Furniture,Lighting,Telecommunication etc
QC	100% Strict Inspection For Every Processing
One-stop Service	Custom Design, Fabrication, Assembly And Delivery

#### Description:

1. Material: 6063,6061,6060,etc.
2. Temper: T5 or T6
3. Finish: Mill finish, anodizing, powder coating, electrophoresis, wooden transfer or pvdf/carbon-flouride coated, polishing, brushing, sand blasting
4. Various colors: Silver, bronze, black, gold, blue,grey, champagne, bright, etc.
5. Machining: Cutting, punching, drilling, tapping, milling, bending, welding, CNC etc.
6. Various in styles and sizes:
  - A) Aluminum alloy bars: 6000 series, normal material such as 6063,6005,6061,6060, special materials such as 6082 etc.
  - B) Aluminum profiles:
    - General aluminum profiles (various shapes of pipes/tubes, angles, T or U shapes etc.)
    - Industrial aluminum profiles ( TV frames, Rim for bicycles and motorcycles, Heat sink profiles, Furniture, Ladder, Guide Rail, Leisure materials, Shower Room, Solar Module Frame, Motor Shell, Pipeline Integration etc.)
    - Construction aluminum profiles
7. Certification: ISO9001,SGS,ROHS,TUV
8. Strong technical development ability, can provide high intensity and high ductility aluminum profiles, to meet customers' different requirements.
9. OEM service available, customized design available

#### Applications:

Industry Aluminum profile used in cars, trains machinery ,electronics, medical and other industrial filed . In terms of hardware, machinery, electromechanical parts, solar PV products, aluminum frames are adopt as important auxiliary materials. We also have aluminum profiles for radiators, fitness machinery, buildings, lighting instrument, windpipes, oil pipelines, for instance.

#### Specifications:

##### 1. Primary Technical Data

##### 1)Chemical composition

Alloy	Si	Fe	Cu	Mn	Mg	Cr	Zn	Ti	Impurity	Al
-------	----	----	----	----	----	----	----	----	----------	----

6063	0.2-0.6	0.35	0.1	0.1	0.45-0.9	0.1	0.1	0.1	0.15	Rest
6061	0.4-0.8	0.7	0.15-0.4	0.15	0.8-1.2	0.04-0.35	0.25	0.15	0.15	Rest
6060	0.3-0.6	0.1-0.3	0.1	0.1	0.35-0.6	-	0.15	0.1	0.15	Rest
6005	0.6-0.9	0.35	0.1	0.1	0.40-0.6	0.1	0.1	0.1	0.15	Rest

## 2) Mechanical property

Alloy	Temper	Tensile strength	Yield strength	Elongation
6063	T5	≥ 160Mpa	≥ 110Mpa	≥ 8%
	T6	≥ 205Mpa	≥ 180Mpa	≥ 8%
6061	T6	≥ 265Mpa	≥ 245Mpa	≥ 8%

## Competitive Advantage:

- 1) Engineering design and support.
- 2) Aluminum profiles deeply processing: cutting, punching, drilling, milling, and fabricating.
- 3) High Quality system, strictly inspection during production and whole inspection before package.
- 4) Good performance, product warranty for 15 years.



+86-13861643436
 aluminum@hentec.com.cn
 aluminumextrusion-profiles.com

Qinfeng Road No.555 Huashi Town Jiangyin Jiangsu China (mainland) 214421