



Thin Wall Aluminum Curtain Wall Profile For Construction , Mill Finished

Our Product Introduction

Basic Information

- Place of Origin: China
- Brand Name: HT
- Certification: CA ,CE
- Minimum Order Quantity: 1 ton
- Packaging Details: Packed with EP paper ,kraft and pallet
- Delivery Time: 20days
- Payment Terms: T/T or L/C
- Supply Ability: 100 000 ton each month



Product Specification

- Highlight: profile aluminum extrusions,
extruded aluminium profiles

Product Description

Thin Wall Aluminum Curtain Wall Profile For Construction , Mill Finished

- 1)temper:T3-T6
- 2)certificate:ISO9001:2008
- 3)surface treatment:anodize
- 4)Advanced surface oxygenate coloring process

Description:

Aluminum curtain wall profiles for construction application is visible.

Features:

- 1) Name: Aluminum curtain wall profiles.
 - 2) Material: 6063, 6061, 6063A and so on are available.
 - 3) Surface treatment: heat transfer imitated wood grain finish, mill finish, anodizing, powder coating, electrophoresis painting, fluorocarbon painting are optional. Any colour can provide according to customer's requirements.
 - 4) Specification: Customizing is available as the customer offer us the section drawings.
 - 5) Packaging: foam paper and carton box package, Kraft paper package, plastic film and the plastic wrap package are optional.
- If you are interesting in any of our items, please feel free to contact us. Appreciate very much your interest in our product.

Feature:

Curtain wall systems with the function of energy-saving are available, including frame curtain walls, and hidden frame curtain wall. Curtain wall used for exterior decoration industrial buildings and villas, and more easy cleaning, energy-saving, and good air-tightness, simple structure, easy installation, good quality procession with high technological machines,beautiful and fashion design.

- 1.Alloy :6063,6061,6005 or according to customer' s choice
- 2.Material:Aluminum
- 3.Suface Treatment: Mill Finished,Anodized ,Electrophoretic coated,Powder spray coated,Fluorocarbon powder spray coated /PVDF Paint, Drawbench,Steel polished,Wood grain coated /Wooden transfer .
- 4.Deep process: Milling, Drilling, Bending,Cutting.
- 5.Application:
The glass and aluminum curtain wall is found in city centers on many new buildings and it is quite popular as a cladding and exterior wall on all types of commercial, industrial, institutional and residential buildings.
- 6.Color:clear, satin, bronze, black, golden, silver, other multicolor
- 7.Temper: T4, T5, T6 ,T66



Applications:

The glass and aluminum curtain wall is found in city centers on many new buildings and it is quite popular as a cladding and exterior wall on all

types of commercial, industrial, institutional and residential buildings. The curtain wall is characterized with coloured vision and spandrel glass areas, a grid of aluminum caps and most recently with metal or stone spandrel covers (see Fig. 1 above). It is also combined with other types of cladding systems such as precast, brick or stone to create attractive and durable building facades.

The curtain wall comprises a complete cladding and exterior wall system with the exception of the indoor finishes. It is generally assembled from aluminum frames, vision glass and spandrel glass (or metal or stone) panels to enclose a building from grade to the roof. It is available in three system types to include the stick built system, the unitized (or panel) system and the structural glazing system (capless vertical joints). The glass and aluminum curtain wall is designed to resist wind and earthquake loads, to limit air leakage, control vapour diffusion, prevent rain penetration, prevent surface and cavity condensation and limit excessive heat loss (or heat gain). It is further designed to resist noise and fire.

The stick built system

The oldest curtain wall type is the stick built system. It is a cladding and exterior wall system which is hung on the building structure from floor to floor. It is assembled from various components to include steel or aluminum anchors, mullions (vertical tubes), rails (horizontal mullions), vision glass, spandrel glass, insulation and metal back pans. In addition, there are various hardware components to include anchors, aluminum connectors, setting blocks, corner blocks, pressure plates, caps, gaskets and sealants.

The unitized curtain wall

A glass and aluminum curtain wall fabricated and installed as a panel system is referred to as a unitized curtain wall system. A unitized curtain wall will have the same components as a stick built curtain wall system. It will comprise aluminum mullions, an IGU and a spandrel panel mounted in a prefabricated aluminum frame. However, instead of assembling the glass and aluminum curtain wall in the field, most of the system components are assembled in a plant under controlled working conditions. This promotes quality assembly and allows for fabrication lead-time and rapid closure of the building.

Specifications:

1.Primary Technical Data

1)Chemical composition

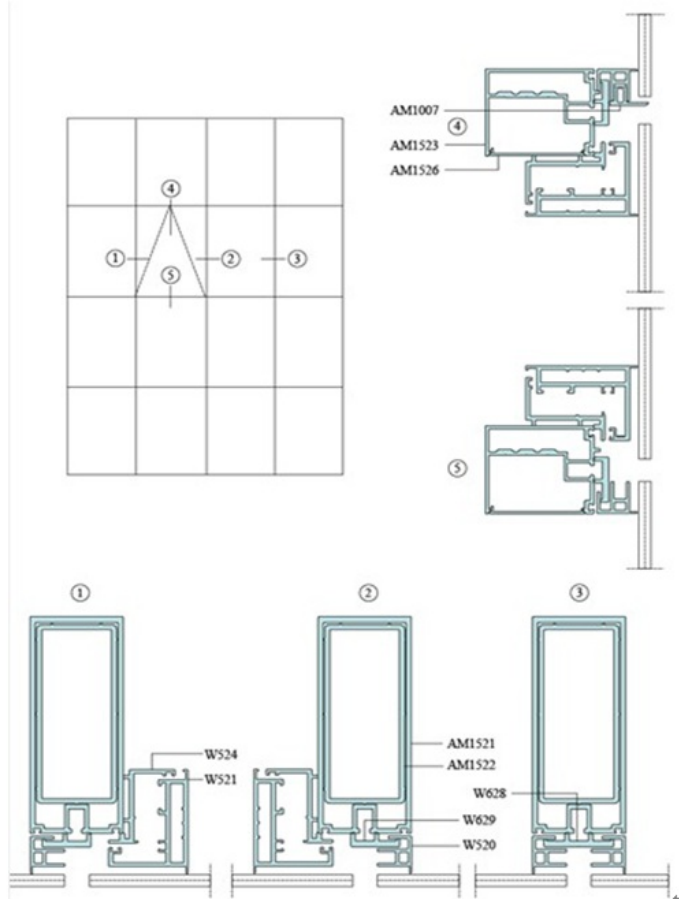
Alloy	Si	Fe	Cu	Mn	Mg	Cr	Zn	Ti	Impurity	Al
6063	0.2-0.6	0.35	0.1	0.1	0.45-0.9	0.1	0.1	0.1	0.15	Rest
6061	0.4-0.8	0.7	0.15-0.4	0.15	0.8-1.2	0.04-0.35	0.25	0.15	0.15	Rest
6060	0.3-0.6	0.1-0.3	0.1	0.1	0.35-0.6	-	0.15	0.1	0.15	Rest
6005	0.6-0.9	0.35	0.1	0.1	0.40-0.6	0.1	0.1	0.1	0.15	Rest

2)Mechanical property

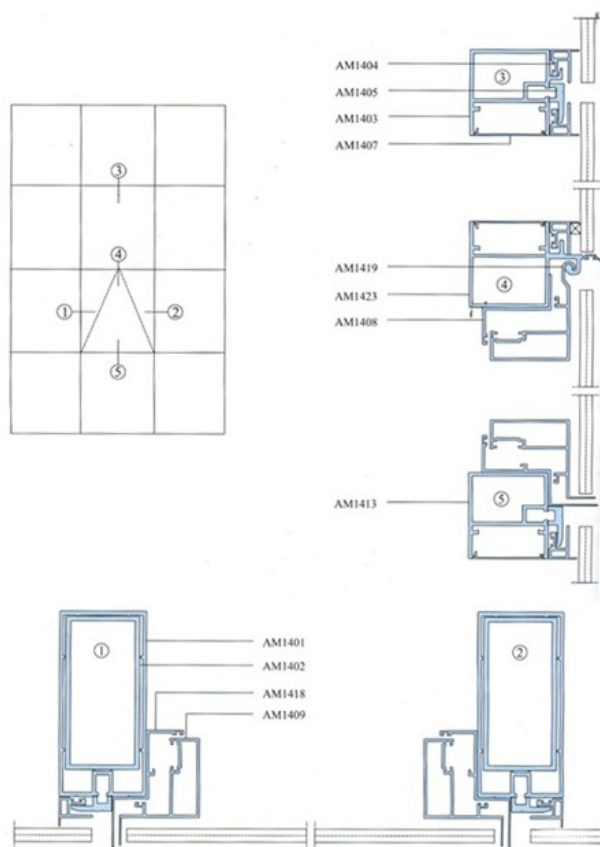
Alloy	Temper	Tensile strength	Yield strength	Elongation
6063	T5	≥ 160Mpa	≥ 110Mpa	≥ 8%
	T6	≥ 205Mpa	≥ 180Mpa	≥ 8%
6061	T6	≥ 265Mpa	≥ 245Mpa	≥ 8%

2. Specifications :

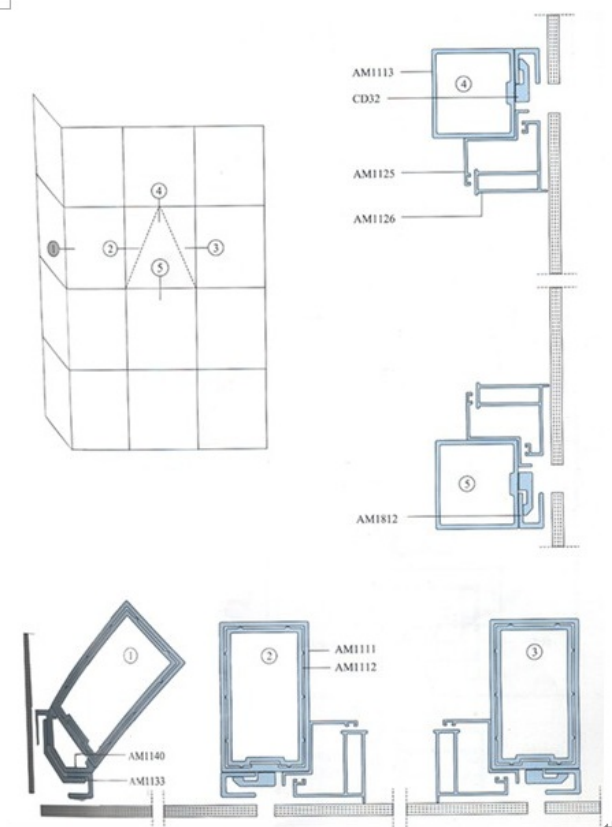
1.[HD80/100/125/150/180 series](#)



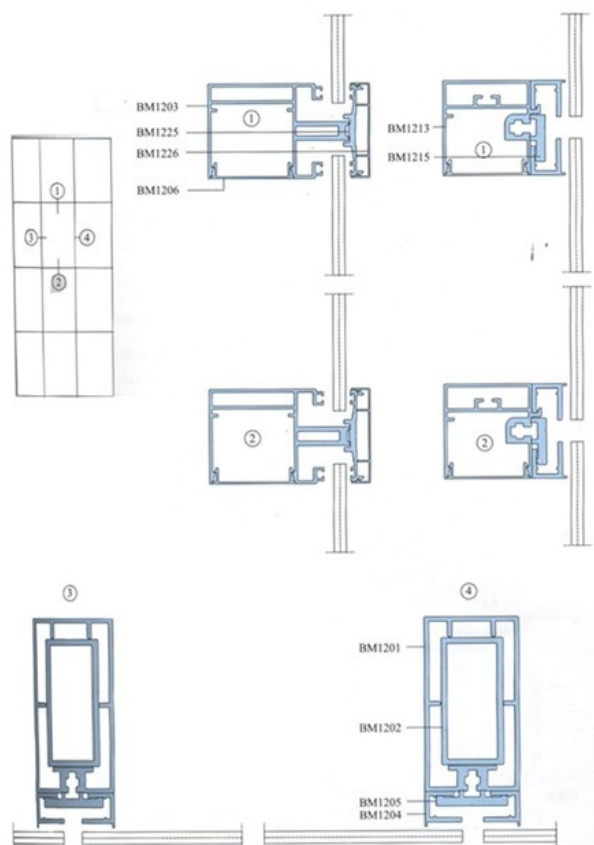
2, [HD140/155 series hidden frame curtain wall](#)



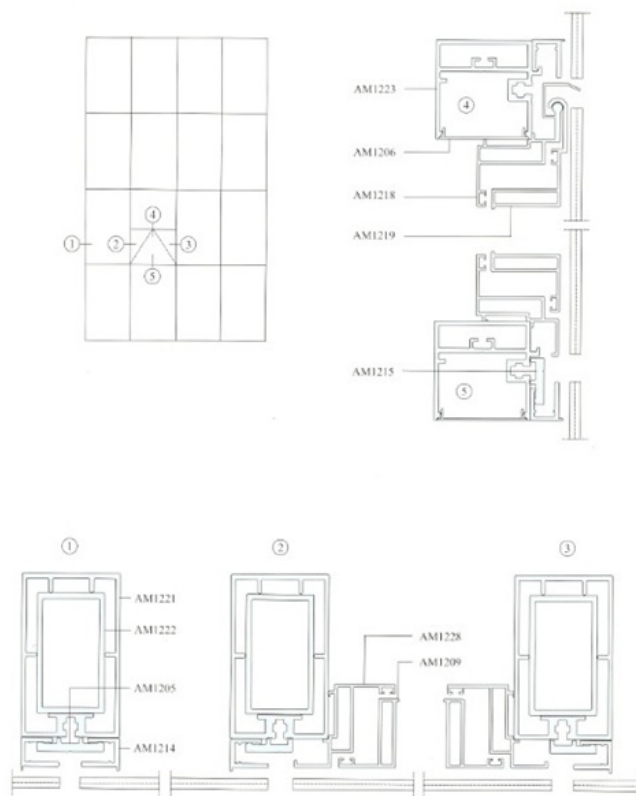
3, [HD110 series curtain wall](#)



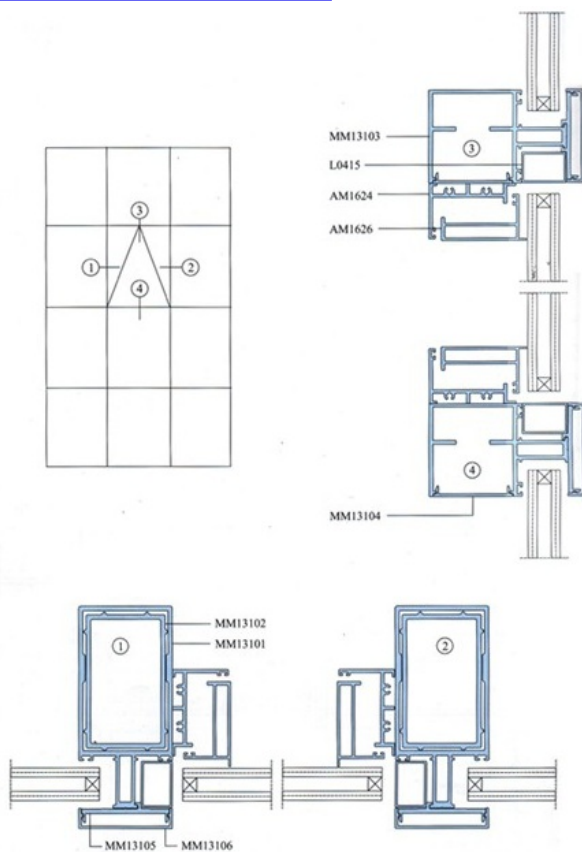
4, [HD120 series visible frame/hidden frame mi-hidden](#)



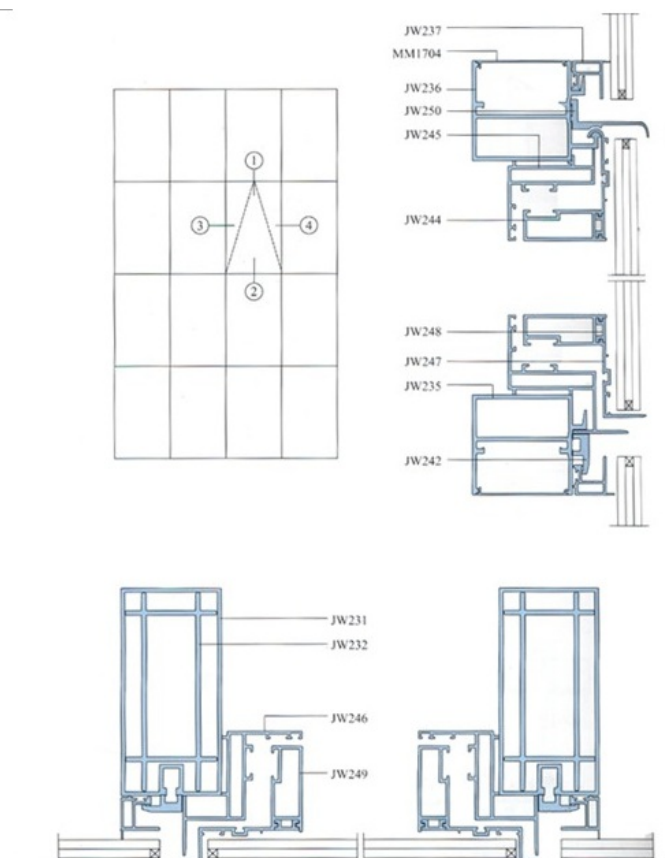
5, [HD120 series hidden-frame curtain wall](#)



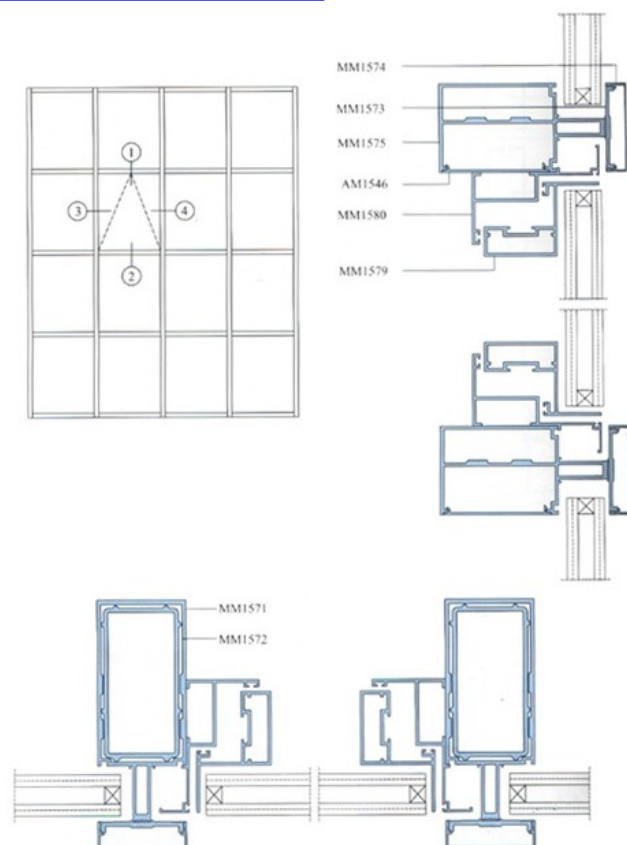
6, [HD130 series visible frame curtain wall](#)



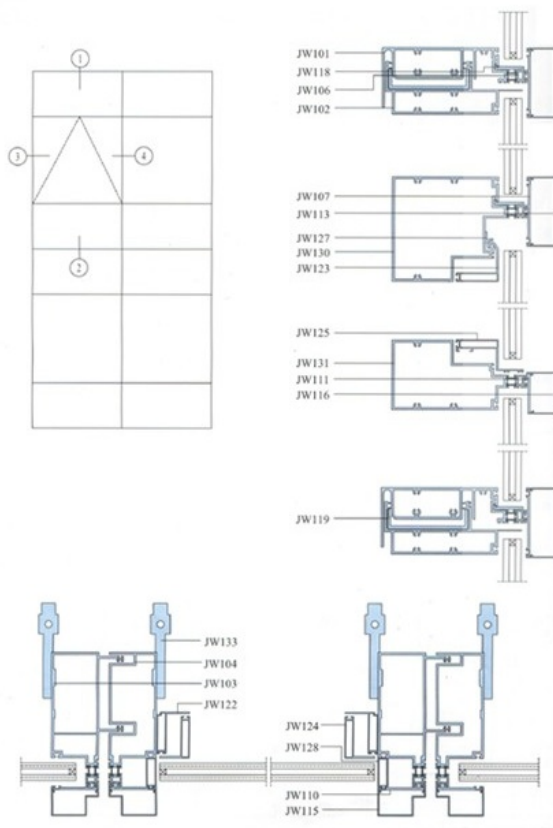
7, [HD135 series hidden frame curtain wall](#)



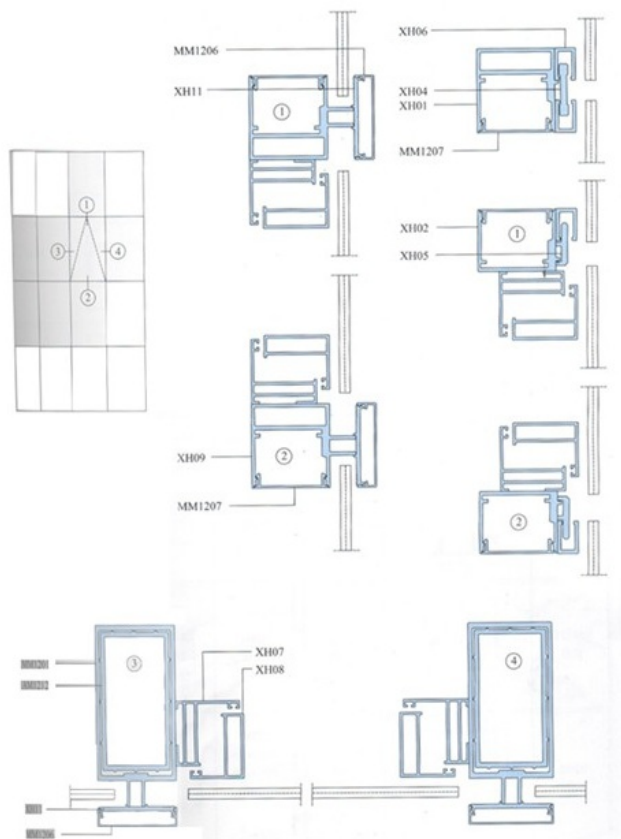
8, [HD150 series visible frame curtain wall](#)



9, [HD180 visible-frame type insulated break bridge](#)



10, [HD120/160 hidden frame mi-hidden frame](#)



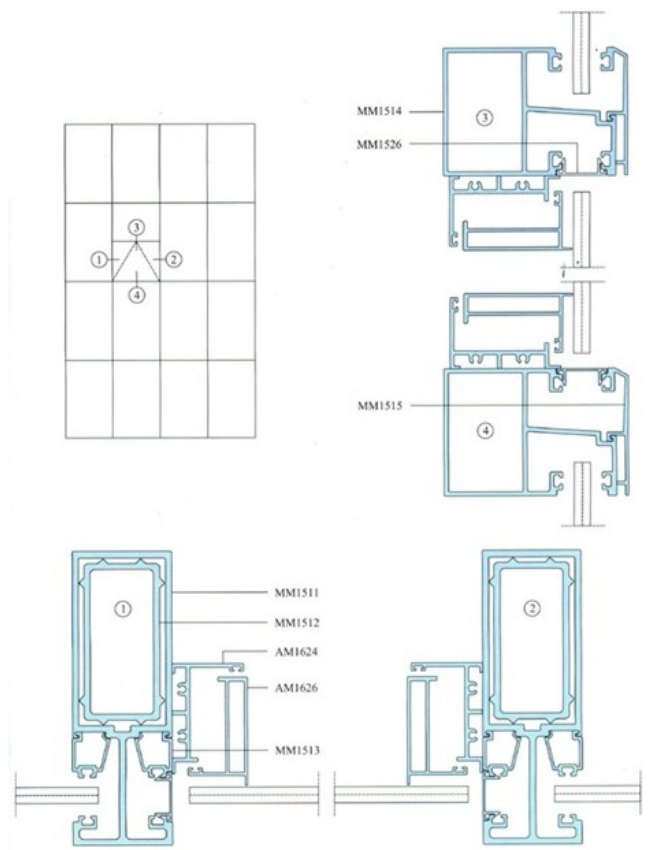
11, [HD140/150 series visible frame curtain wall](#)

型号名称	简图	线密度 kg/m	型号名称	简图	线密度 kg/m
MT1501 主框		3.242	MT1524 横框		1.926
AM1612N 套芯		2.728	MT1525 横框盖板		0.219
MT1522 主框		3.164	MT1504 压板		0.703
AM13812 套芯		2.864	MT1505 盖板		0.458
MT1502 横框		2.414	MT1505N 盖板		1.187
MT1503 横框盖板		0.299	MT1505N1 盖板		1.103

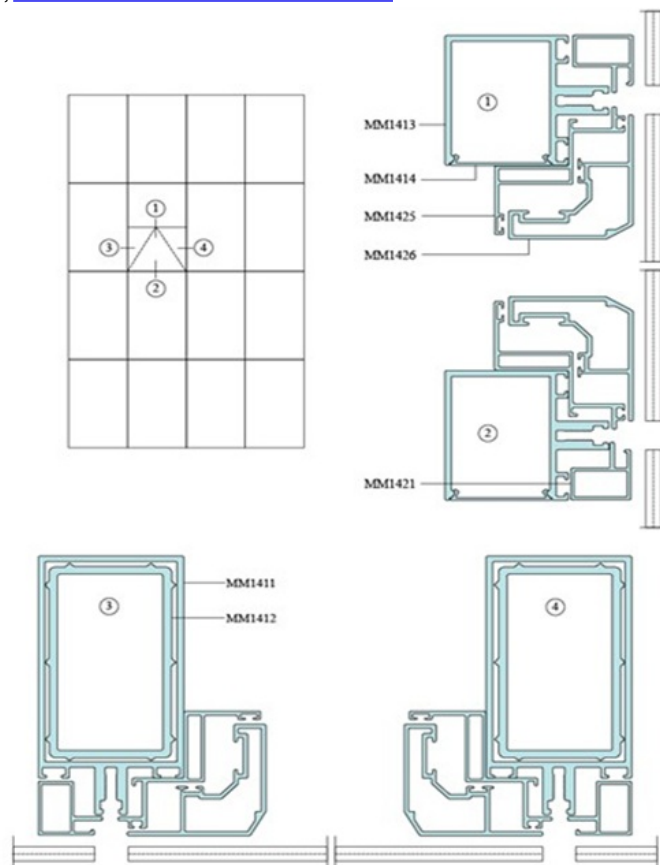
12. HD155/190 visible-frame insulated break bridge

型号名称	简图	线密度 kg/m	型号名称	简图	线密度 kg/m
JW032 主框		3.405	MM050 盖板		0.384
JW033 套芯		2.544	JW036 盖板		1.113
JW034 横框		2.558	JW004 附件		0.433
AM11606 盖板		0.193	JW037 附件		0.557
JW005 压板		0.957	JW038 托条		0.300
JW006 压板		0.799	JW035 封盖		0.251

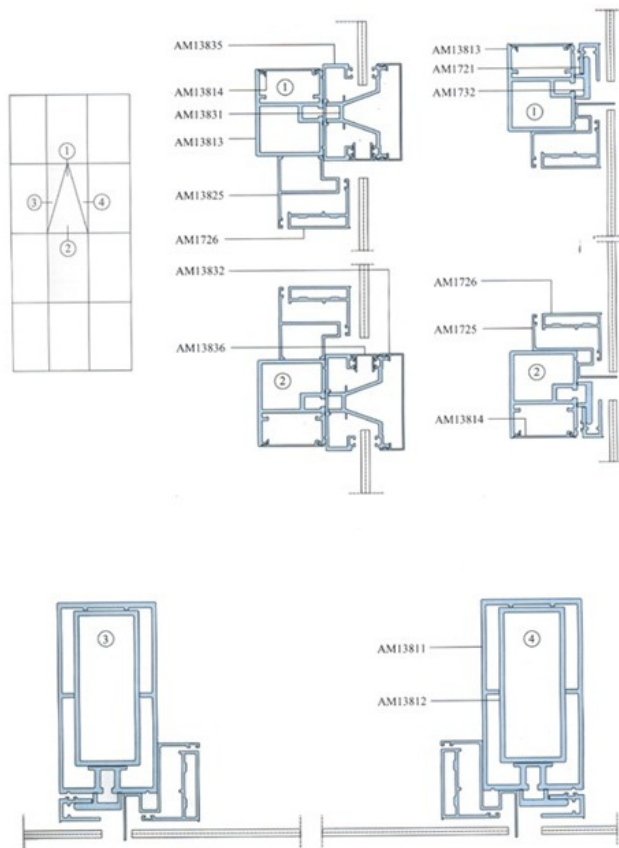
13. HD135/140/150 series visible frame curtain wall



14, [HD100/140/160/180/200 series curtain wall](#)



15, [HD120/138/155/174/185 series curtain wall](#)



Competitive Advantage:

- 1)Engineering design and support.
- 2)Aluminium profiles deeply processing:cutting,punching,drilling,milling,and fabricating.
- 3)High Quality system, strictly inspection during production and whole inspection before package.
- 4)Good performance, product warranty for 15 years.





+86-13861643436



aluminum@hentec.com.cn



aluminumextrusion-profiles.com

Qinfeng Road No.555 Huashi Town Jiangyin Jiangsu China (mainland) 214421