



Customized Industrial Aluminum Extrusion Profile Drawbench T Slot Frame

Our Product Introduction

for more products please visit us on aluminumextrusion-profiles.com

Basic Information

- Place of Origin: China
- Brand Name: MetalPlus
- Certification: CA ,CE ,ISO14001:2004, ISO9001:2000
- Minimum Order Quantity: 1 ton
- Packaging Details: Ep paper ,kraft ,pallet
- Delivery Time: 20days
- Payment Terms: T/T ,L/C
- Supply Ability: 100 000ton each month



Product Specification

- Product Name: Industrial Aluminium Profile
- Alloy: 6063,6061,6005
- Material: Aluminum
- Surface Treatment: Anodized Powder Coated, Drawbench,Steel Polished
- Deep Process: Milling, Drilling, Cutting
- Temper: T5, T6
- Highlight: **Drawbench Aluminum Extrusion Profile, Industrial Aluminum Extrusion Profile, T Slot Aluminium Profile Frame**



Product Description

Customized Industrial Aluminum Extrusion Profile T Slot Aluminium Profile Frame

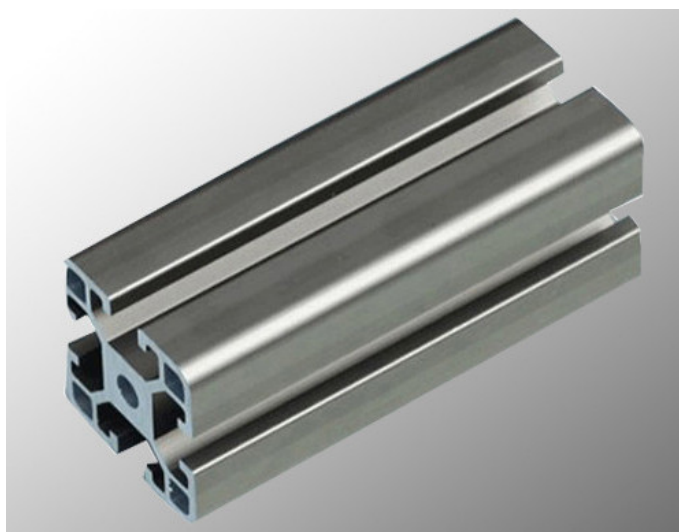
T-slot Industrial Aluminium profile are mainly produced by Alloy 6061 -

T5/T6 or 6063-T5/T6, it is widely used for aluminium display and exhibition

shelf, aluminium conveyors system, work bench, machine frames and stairway

-platform-system, transportation, construction and so on.

Material	6063 6061 6082 6005 6060 T4 T5 T6 T66 aluminium alloy etc.
Surface treatment	Can be customized, such as Mill finished, Anodized, Electroplating, Powder coated, Painted, Silver matt, Sand blasted, PVDF etc.
Aluminium Profile Size	15/20/30/40/45/50/60/80/90/100/160 series etc.
V Slot, T Slot size	6mm,8mm,10mm
Color	Standard: black, silver and grey. Can be customized (RAL color numbers)
Surface	Mill finish, Anodizing, Sand Blasting, Powder coating, etc.
Deep processing	Cutting Size, Drilling holes, Adding mounting bracket, Flanged side panels, etc.
Application of Aluminium Profile	Building, Industrial, Machinery, Automation parts, CNC
Certification	ISO9001
Shipping Term	EXW, FOB, C&F or others can be discussed.



Application :

Stock Aluminum Extrusions aluminum extrusion profile :

Mainly used for industrial production , such as automation equipment , enclosure of the skeleton and the companies according to their own customized mold machinery and equipment , such as assembly line conveyor , hoist, dispenser, testing equipment, shelves , etc., electronic machinery industries and clean room with a gain majority.

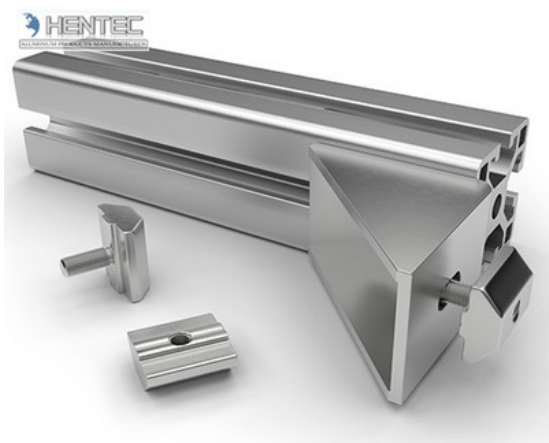
Advantages:

- 1),to facilitate the construction : a modular and multi-functional, without complex design and processing , you can quickly frame the ideal machinery coat.
- 2),beautiful and practical : light and high rigidity, simple and beautiful appearance .
- 3),Strong scalability : The unique T-type, groove design , the installation of components without demolition profiles can be installed anywhere in the nut screws , modified equipment is simple and quick.

Main products :

Anodized aluminum, electrophoretic coating aluminum , electrostatic powder coating aluminum and oxygen barrier broken

bridge aluminum , wood brick in aluminum , PVDF coating aluminum, Sliding window , casement series , every thermal bridge series , general decoration series, curtain series, industrial profile series.



Specifications:

1. Primary Technical Data

1)Chemical composition

Alloy	Si	Fe	Cu	Mn	Mg	Cr	Zn	Ti	Impurity	Al
6063	0.2-0.6	0.35	0.1	0.1	0.45-0.9	0.1	0.1	0.1	0.15	Rest
6061	0.4-0.8	0.7	0.15-0.4	0.15	0.8-1.2	0.04-0.35	0.25	0.15	0.15	Rest
6060	0.3-0.6	0.1-0.3	0.1	0.1	0.35-0.6	-	0.15	0.1	0.15	Rest
6005	0.6-0.9	0.35	0.1	0.1	0.40-0.6	0.1	0.1	0.1	0.15	Rest

2)Mechanical property

Alloy	Temper	Tensile strength	Yield strength	Elongation
6063	T5	≥ 160Mpa	≥ 110Mpa	≥ 8%
	T6	≥ 205Mpa	≥ 180Mpa	≥ 8%
6061	T6	≥ 265Mpa	≥ 245Mpa	≥ 8%

公司图号	图 样	线密度 kg/m
HT-745		1.292
HT-746		0.786
HT-747		2.524
HT-749		0.464
HT-750		0.808
HT-751		1.616

公司图号	图 样	线密度 kg/m
HT-752		1.646
HT-753		2.952
HT-754		2.015
HT-767		1.522

Competitive Advantage:

- 1) Engineering design and support.
- 2) Aluminum profiles deeply processing:cutting,punching,drilling,milling,and fabricating.
- 3) High Quality system, strictly inspection during production and whole inspection before package.
- 4) Good performance, product warranty for 15 years.



+86-13861643436



aluminum@hentec.com.cn



aluminumextrusion-profiles.com

Qinfeng Road No.555 Huashi Town Jiangyin Jiangsu China (mainland) 214421