



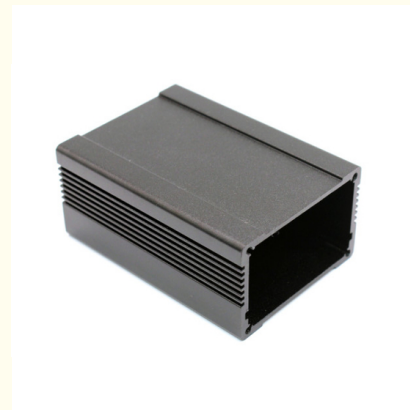
Electrophoretic Coated Aluminium Extruded Profiles Electronics Compliant With RoHS

Our Product Introduction

for more products please visit us on aluminumextrusion-profiles.com

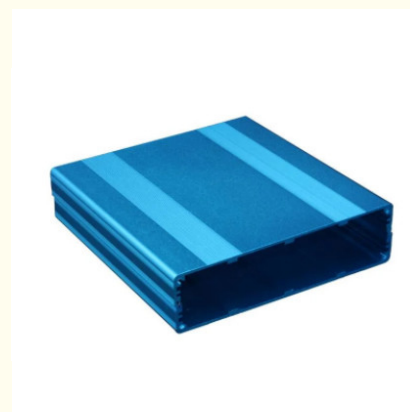
Basic Information

- Place of Origin: China
- Brand Name: HENTEC
- Certification: CA ,CE
- Minimum Order Quantity: 500pcs
- Packaging Details: Ep paper ,kraft ,pallet
- Delivery Time: 20days
- Payment Terms: T/T ,L/C
- Supply Ability: 100 000ton each month



Product Specification

- Product Name: Aluminum Heatsink Extrusion Profile
- Alloy: 6063,6061
- Material: Aluminium
- Surface Treatment: Mill Finished,Anodized ,Electrophoretic Coated,Powder Spray Coated
- Deep Process: Milling, Drilling, Bending,Cutting
- Temper: T5, T6
- Highlight: **Aluminium Extruded Profiles Electronics Compliant**
, Aluminium 6063 Extruded Profiles,
Electrophoretic coated Aluminium Extruded Profiles



More Images



Product Description

Electrical Cover Aluminium Extruded Profiles Electronics, Compliant With RoHS

1. Reliable quality (ISO9001:2008 certified).
2. Competitive prices with short lead-time for both tooling and parts, because we do everything in-house.
3. Effective and strong technical support and excellent sales services.
4. Sufficient production capacity (only 65% occupied).
5. Efficient communication (48-hour quote lead time).
6. Compliant with RoHS Test.

Product Description

M a t e r i a l	6000 series Aluminium Alloy
T e m p e r a t u r e	T4, T5, T6
S h a p e	Square, round, rectangular, special shape customized
S i z e / T h i c k n e s s	Profiles thickness : 0.8 to 5.0mm Anodize film thickness : 8~15 um Powder coating thickness : 40 ~ 120 um Length : ≤6000mm / customized available
D e e p p r o c e s s	CNC, machining, drilling, milling, cutting, punching, bending, assembling
S u r f a c e f i n i s h i n g	Sand blasting, Polished, Brushed Powder coating, Wood grain , Anodized etc.
C o l o r s	Color sheet / Customized color available
A p p l i c a t i o n	<ul style="list-style-type: none"> - For Heat sinks for car amplifier enclosure - For Heat sinks for LED lighting, high-power LED street lighting, stage lighting, LED tunnel lighting etc - For motor shell - For LED lighting/TV frame - For hook of LED stage lighting - For industry assembly lines equipment - For other OEM design size and dimension

Warranty :

1. GB5237-2008 equal to EN12020-1.2(2001);
2. GB6892-2006 equal to DIN 1725
3. Within 15 years without color changing, all life without surface peeling off;

Moulding :

we open the new die within 10days

Applications:

Industry Aluminum profile used in cars, trains machinery ,electronics, medical and other industrial filed . In terms of hardware, machinery, electromechanical parts, solar PV products, aluminum frames are adopt as important auxiliary materials. We also have aluminum profiles for radiators, fitness machinery, buildings, lighting instrument, windpipes, oil pipelines, for instance.

Specifications:

1. Primary Technical Data

1)Chemical composition

Alloy	Si	Fe	Cu	Mn	Mg	Cr	Zn	Ti	Impurity	Al
6063	0.2-0.6	0.35	0.1	0.1	0.45-0.9	0.1	0.1	0.1	0.15	Rest
6061	0.4-0.8	0.7	0.15-0.4	0.15	0.8-1.2	0.04-0.35	0.25	0.15	0.15	Rest
6060	0.3-0.6	0.1-0.3	0.1	0.1	0.35-0.6	-	0.15	0.1	0.15	Rest
6005	0.6-0.9	0.35	0.1	0.1	0.40-0.6	0.1	0.1	0.1	0.15	Rest

2) Mechanical property

Alloy	Temper	Tensile strength	Yield strength	Elongation
6063	T5	≥ 160Mpa	≥ 110Mpa	≥ 8%
	T6	≥ 205Mpa	≥ 180Mpa	≥ 8%
6061	T6	≥ 265Mpa	≥ 245Mpa	≥ 8%

2. Specifications:

Excellent material for smooth and subtle edges.

Elegant appearance.

Surface treatment: colorful anodized or electrostatic powder coated.

Suitable for constructions and other industrial purposes.


Customized surface finishes are welcome.

Competitive Advantage:

1. Over 17 years aluminum industrial experience and strong team;
2. Full inspection of products before shipment;
3. Complete production processing line, from melting, extrusion, powder coating, anodizing and wood grain, also with deep processing capacity.
4. ISO9001: 2008, ISO14001: 2004, ISO10012, AA grade standardize corporate;
5. Multi business scope, various types of products, ensures market shares.
6. OEM and ODM are available.





 +86-13861643436

 aluminum@hentec.com.cn

 aluminumextrusion-profiles.com

Qinfeng Road No.555 Huashi Town Jiangyin Jiangsu China (mainland) 214421