

4040 Industrial Aluminium Frame , Alu Profil 40X40 Extrusion Aluminium Profile Linear Profile

Our Product Introduction

Basic Information

- Place of Origin: China
- Brand Name: HT
- Certification: CA ,CE ,ISO14001:2004, ISO9001:2000
- Minimum Order Quantity: 1 ton
- Packaging Details: Ep paper ,kraft ,pallet
- Delivery Time: 20days
- Payment Terms: T/T ,L/C
- Supply Ability: 100 000ton each month



Product Specification

- Product Name: Industrial Aluminium Profile
- Alloy: 6063,6061,6005
- Material: Aluminum
- Surface Treatment: Anodized Powder Coated, Drawbench,Steel Polished
- Deep Process: Milling, Drilling, Cutting
- Temper: T5, T6
- Highlight: **4040 Industrial Aluminium Frame,
4040 Industrial Alu Profile,
customized Aluminium Linear Profile**

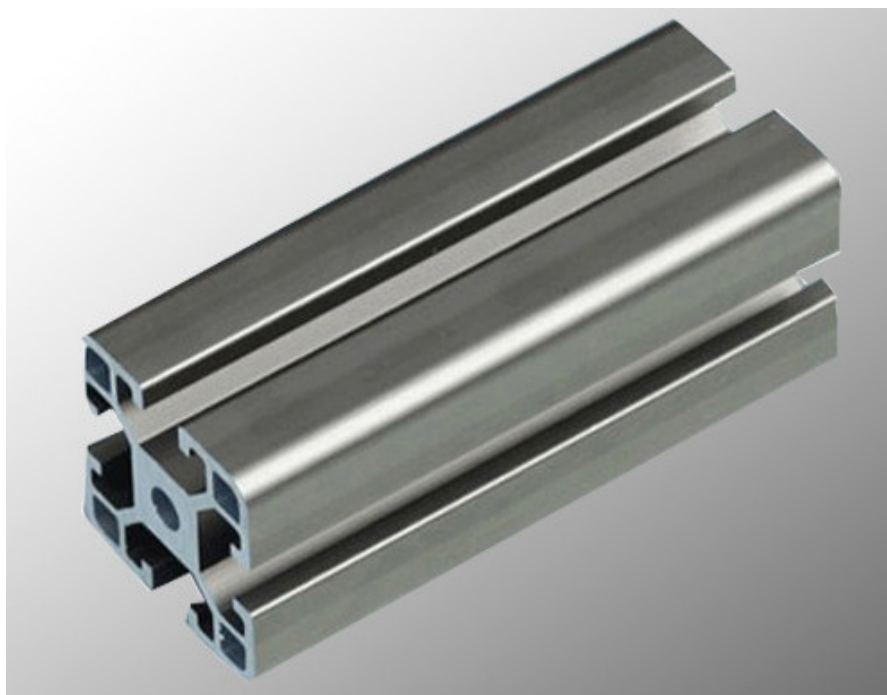
for more products please visit us on aluminumextrusion-profiles.com

Product Description

4040 Industrial Aluminium Frame , Alu Profil 40X40 Extrusion Aluminium Profile Linear Profile

Window and Door aluminum profile can be used in a large number of residential, commercial and industrial applications. These include door and window frames, sliding door sills, and window stiffeners. The window and door aluminum profile are made from material that does not warp or rust, and hence can be used in outdoor settings as well as indoors. Due to the low thermal conductivity, this aluminum profile for mosquito screens, doors and windows is sustainable and resistant to weather changes.

Material & Temper	Alloy 6063-T5
Surface Treatment	Mill-Finished, Anodizing, Powder Coating, Electrophoresis, Wood Grain, Polishing
Colour	Silver, Champagne, Bronze, Golden, Black/ International RAL Code/ Customized.
Film Standard	Anodized:7-23 μ , Powder coating: 60-120 μ , Electrophoresis film: 12-25 μ .
Lifetime	10-15year
MOQ	500 kgs per model
Length	5.8M or Customized.
Thickness	0.4mm above or Customized.
Application	Building and Construction and Decoration.
New Moulds	Mould charge from 200\$ and on. 10 Days for mould production.
Free Samples	Can be available all the time, about 1 days can be sent.
Delivery time	1. 20-25 days for production ; 2. Extra10 days for mould production



Description:

1. Material: 6063,6061,6060,etc.
2. Temper: T5 or T6
3. Finish: Mill finish, anodizing, powder coating, electrophoresis, wooden transfer or pvdf/carbon-flouride coated, polishing, brushing, sand blasting
4. Various colors: Silver, bronze, black, gold, blue, grey, champagne, bright, etc.
5. Machining: Cutting, punching, drilling, tapping, milling, bending, welding, CNC etc.
6. Various in styles and sizes:
 - A) Aluminum alloy bars: 6000 series, normal material such as 6063,6005,6061,6060, special materials such as 6082 etc.
 - B) Aluminum profiles:
 - General aluminum profiles (various shapes of pipes/tubes, angles, T or U shapes etc.)
 - Industrial aluminum profiles (TV frames, Rim for bicycles and motorcycles, Heat sink profiles, Furniture, Ladder, Guide Rail, Leisure materials, Shower Room, Solar Module Frame, Motor Shell, Pipeline Integration etc.)
 - Construction aluminum profiles
7. Certification: ISO9001,SGS,ROHS,TUV
8. Strong technical development ability, can provide high intensity and high ductility aluminum profiles, to meet customers' different requirements.
9. OEM service available, customized design available

Applications:

Industry Aluminum profile used in cars, trains machinery ,electronics, medical and other industrial filed . In terms of hardware, machinery,

electromechanical parts, solar PV products, aluminum frames are adopt as important auxiliary materials. We also have aluminum profiles for radiators, fitness machinery, buildings, lighting instrument, windpipes, oil pipelines, for instance.



Specifications:

1. Primary Technical Data

1)Chemical composition

Alloy	Si	Fe	Cu	Mn	Mg	Cr	Zn	Ti	Impurity	Al
6063	0.2-0.6	0.35	0.1	0.1	0.45-0.9	0.1	0.1	0.1	0.15	Rest
6061	0.4-0.8	0.7	0.15-0.4	0.15	0.8-1.2	0.04-0.35	0.25	0.15	0.15	Rest
6060	0.3-0.6	0.1-0.3	0.1	0.1	0.35-0.6	-	0.15	0.1	0.15	Rest
6005	0.6-0.9	0.35	0.1	0.1	0.40-0.6	0.1	0.1	0.1	0.15	Rest

2)Mechanical property

Alloy	Temper	Tensile strength	Yield strength	Elongation
6063	T5	≥ 160Mpa	≥ 110Mpa	≥ 8%
	T6	≥ 205Mpa	≥ 180Mpa	≥ 8%
6061	T6	≥ 265Mpa	≥ 245Mpa	≥ 8%

公司图号	图 样	线密度 kg/m
HT-745		1.292
HT-746		0.786
HT-747		2.524
HT-749		0.464
HT-750		0.808
HT-751		1.616


公司图号	图 样	线密度 kg/m
HT-752		1.646
HT-753		2.952
HT-754		2.015
HT-767		1.522

Competitive Advantage:

- 1) Engineering design and support.
- 2) Aluminum profiles deeply processing:cutting,punching,drilling,milling,and fabricating.
- 3) High Quality system, strictly inspection during production and whole inspection before package.
- 4) Good performance, product warranty for 15 years.



 +86-13861643436

 aluminum@hentec.com.cn

 aluminumextrusion-profiles.com

Qinfeng Road No.555 Huashi Town Jiangyin Jiangsu China (mainland) 214421