

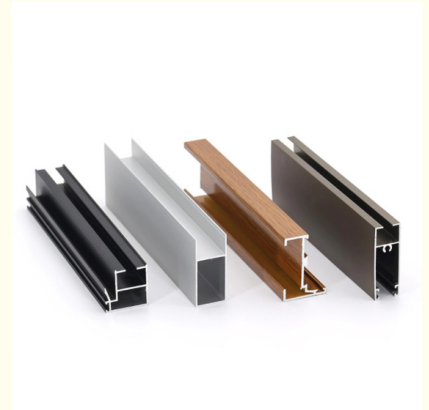
Electrophoresis Aluminum Extrusion Profiles 6063 / Construction Profiles T5

Our Product Introduction

for more products please visit us on aluminumextrusion-profiles.com

Basic Information

- Place of Origin: China
- Brand Name: MetalPlus
- Certification: SGS
- Minimum Order Quantity: 1 ton
- Packaging Details: Ep paper ,kraft ,pallet
- Delivery Time: 20days
- Payment Terms: T/T ,L/C
- Supply Ability: 100 000ton each month



Product Specification

- Product Name: Industrial Aluminium Profile
- Alloy: 6063/6061
- Material: Aluminium
- Surface Treatment: Mill Finished, Anodized ,Electrophoretic Coated, Powder Spray Coated
- Deep Process: Milling, Drilling, Bending, Cutting
- Temper: T4, T5, T6 ,T66
- Highlight: **Electrophoresis Aluminum Extrusion Profiles, Aluminum 6063 Extrusion Profiles, T5 Aluminum Extrusion Profiles**



Product Description

Electrophoresis Aluminum Extrusion Profiles / Construction Profiles

Product Description

- (1) Construction Aluminum Extrusion Profiles
- (2) Material , Alloy 6063/6061/6005/6060,T5/T6
- (3) Finish : anodizing , powder coating , wood grain ,electrophoresis ...
- (4) Size: customized
- (5) Standard : High quality
- (6) Characteristics : strong ,stylish ,durable, corrosion-resistant.

Product Name	Construction Aluminum Extrusion Profiles
Original	China
Capacity	10 000Tons/Month
Thickness	>0.8mm
Length	4.0-6.5Meter
Hardness	>8HW
Size	Max.400x200mm
Color	Silver,White,Black,Bronze,Champagun,Wood and any as requested

Order,payment,terms,shipment

- 1, Minimum order: 500kg per trial order 1 piece of sample free of charge provided by approval and kept for future mass production.
- 2, Sample Lead Time: 25 working days(15 days for making the tool and 10 days making the samples. Before sending the samples to customer, samples should pass strict test in our lab.)Production Lead time: it depends on customers' order quantity (30 working days after deposit).
- 3, Payment: (Can negotiate with customers, our usual practices are as follow)
- 4, Tooling:100% prepaid by T/T.
- 5, Parts:30% upon order confirmation and balance before delivery by T/T

Applications:

Aluminum profile used in cars, trains machinery ,electronics, medical and other industrial filed . In terms of hardware, machinery, electromechanical parts, solar PV products, aluminum frames are adopt as important auxiliary materials. We also have aluminum profiles for radiators, fitness machinery, buildings, lighting instrument, windpipes, oil pipelines, for instance.

[window and door P1-2.pdf](#)

[window and door P3-4.pdf](#)

[window and door P5-6.pdf](#)

[window and door P7-8.pdf](#)

Competitive Advantage:

1. good quality aluminium profile with economic price
2. 15-year manufacturing experience
3. ISO9000
4. ODM or OEM



FAQ For Saving Your Precious Time!

Q1:What's the thickness for anodizing?Can you do 15um?

A:Our normal thickness is about 10 um.Yes, we can do 15um and above.

Q2:What color you can do for powder coating?The thickness for powder coat?

A:We can do any color for powder coat as long as you can provide the color sample.Our normally powder coating thickness is 60-80um.

Q3:What color you can do for wood grain?

A:Our most popular colors are Western Red Cedar, Australia Cedar, Jarrah I, Jarrah II, Chestnut, Bush Cherry, Bush Wood, Western Wood, Snow Gum, etc.If you need any other colors, we can do according to the color samples you provide.

Q4:How's the weather resistance for wood grain finish D1010?

A:(1).Powder:Akzo Noble Interpon D1010.

(2).Wood grain film:Italian Memphis.

(3).Standard complied:American AAMA Standard.2603

(4).UV test:1000 hours.

(5).Salt spraying test:1000 hours.

(6).Normal weather:10 years color guarantee.

Q5:What certification do you have?What's your standard?

A:We have ISO certification.Our standard is DIN, AAMA, AS/NZS, China GB.

Q6:What's the delivery time for samples and mass production?

A:(1).2-3 weeks to make the new moulds and make free samples.

(2).3-4 weeks after receipt of deposit and confirmation of the order.



+86-13861643436



aluminum@hentec.com.cn



aluminumextrusion-profiles.com

Qinfeng Road No.555 Huashi Town Jiangyin Jiangsu China (mainland) 214421