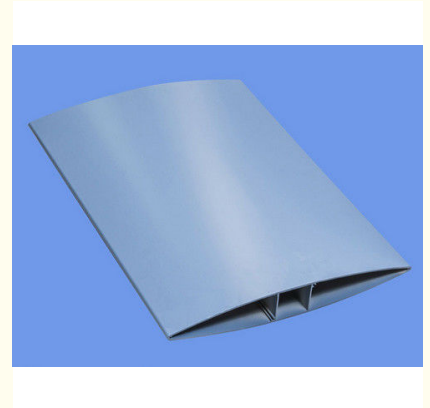


6060 Industrial Extruded Aluminum Louvers T4 / T5 / T6 / T66 Anodize Surface

Our Product Introduction

Basic Information

- Place of Origin: China
- Brand Name: HT
- Certification: CA ,CE
- Minimum Order Quantity: 500set
- Packaging Details: Ep paper , pallet or wooden case
- Delivery Time: 20days
- Payment Terms: T/T ,L/C
- Supply Ability: 100 000sets each month



Product Specification

- Product Name: Industrial Fan Blade
- Item: Aluminum Extrusion Profile Of Industrial Fan Blade
- Temper: T4, T5, T6 ,T66
- Surface: Anodize
- Material: Aluminum
- Machining: 1. Milling; 2. Drilling; 3. Bending; 4. Cutting ...
- Highlight: **replacement fan blade, exhaust fan blades**

Product Description

6060 Industrial Extruded Aluminum Louvers T4 / T5 / T6 / T66 Anodize Surface

1. Alloy :6063,6061,6005,6060
2. erial:Aluminum
3. Temper: T4, T5, T6 ,T66
4. Surface Treatment: Mill Finished,Anodized ,Electrophoretic coated,Powder spray coated,Fluorocarbon powder spray coated /PVDF Paint, Drawbench,Steel polished,Wood grain coated /Wooden transfer .
5. Deep process: Milling, Drilling, Bending,Cutting.
6. Application: Industry Aluminum profile used in cars, trains machinery ,electronics, medical and other industrial filed . In terms of hardware, machinery, electromechanical parts, solar PV products, aluminum frames are adopt as important auxiliary materials. We also have aluminum profiles for radiators, fitness machinery, buildings, lighting instrument, windpipes, oil pipelines, for instance.
7. Color:clear, satin, bronze, black, golden, silver, other multicolor

Description:

Item	6063-T5 Industrial Fan Blade ,Airfoil Aluminum Extruded Section Louver
Material	Alloy 6063, 6061 or according to customer' s choice
Temper	T4, T5, T6,T66
Surface	Anodize (clear, satin, bronze, black, golden, silver, other multicolor) , electrophoresis, powder coating, PVDF coating, wood grain painting, etc.
MOQ	1 ton. Usually 12 tons for a 20 feet container; 24 tons for a 40 feet container.
Profile type	Industry Aluminum profile used in industrial fan , cars, trains machinery ,trailers ,electronics, medical and other industrial filed .
Machining	1. milling; 2. Drilling; 3. Bending; 4. Cutting ...
Moulding	1. Using our moulds, free; 2. Using customer' s drawing, opening mould fee need to be paid .
Certificate	ISO14001:2004, ISO9001:2000
FOB Port	Shanghai, etc.

Specifications:

Chemical composition

Alloy	Si	Fe	Cu	Mn	Mg	Cr	Zn	Ti	Impurity	Al
6063	0.2-0.6	0.35	0.1	0.1	0.45-0.9	0.1	0.1	0.1	0.15	Rest
6061	0.4-0.8	0.7	0.15-0.4	0.15	0.8-1.2	0.04-0.35	0.25	0.15	0.15	Rest
6060	0.3-0.6	0.1-0.3	0.1	0.1	0.35-0.6	-	0.15	0.1	0.15	Rest
6005	0.6-0.9	0.35	0.1	0.1	0.40-0.6	0.1	0.1	0.1	0.15	Rest

2) Mechanical property

Alloy	Temper	Tensile strength	Yield strength	Elongation
6063	T5	≥ 160Mpa	≥ 110Mpa	≥ 8%
	T6	≥ 205Mpa	≥ 180Mpa	≥ 8%
6061	T6	≥ 265Mpa	≥ 245Mpa	≥ 8%

Competitive Advantage:

- 1) Engineering design and support.
- 2) Aluminium profiles deeply processing:cutting,punching,drilling,milling,and fabricating.
- 3) High Quality system, strictly inspection during production and whole inspection before package.
- 4) Good performance, product warranty for 15 years.

Applications:

Industry Aluminum profile used in cars, trains machinery ,electronics, medical and other industrial filed . In terms of hardware, machinery, electromechanical parts, solar PV products, aluminum frames are adopt as important auxiliary materials. We also have aluminum profiles for radiators, fitness machinery, buildings, lighting instrument, windpipes, oil pipelines, for instance.



+86-13861643436



aluminum@hentec.com.cn



aluminumextrusion-profiles.com

Qinfeng Road No.555 Huashi Town Jiangyin Jiangsu China (mainland) 214421