



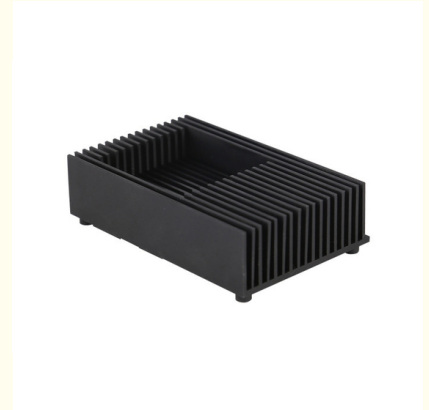
Polished Heat Sink 6082 Extruded Aluminum Enclosure Embedded Motion Controller Box

Our Product Introduction

for more products please visit us on aluminumextrusion-profiles.com

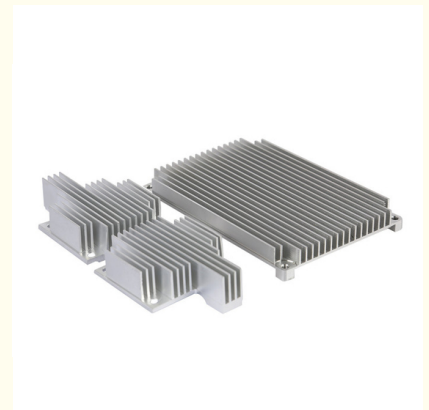
Basic Information

- Place of Origin: China
- Brand Name: MetalPlus
- Minimum Order Quantity: 500KG
- Packaging Details: wooden case , pallet



Product Specification

- Features: Dustproof, Waterproof, Corrosion Resistance
- Warranty: 15years
- Surface: Sandblasting / Anodizing
- Color: Black
- Logo: Silk Screen
- Application: Electronic Equipment
- Finish: Anodized
- Material: Extruded Aluminum
- Mounting: Wall Mount
- Size: Customized
- Thickness: 1.5mm
- Highlight: **6082 extruded aluminum enclosure, polished extruded aluminum enclosure, 6082 aluminum heat sink enclosure**



Product Description

Anodized Extruded Aluminum Enclosure / Embeded Motion Controller Box

Description

Item	Customized Industrial 6061/6063 T-Slot Anodized/Powder Coating Aluminum Extrusion Profiles
Material	Aluminum Alloy 6000 series, such as 6005, 6061, 6063, 6082etc.
Profile Shape	Round, Hollow profile, Oval, Tube, Flat, Triangle, Square, Rectangle, Rectangular, Pentagon Pentagonal, hexagon hexagonal, heptagon heptagonal, octagon octagonal, trapezoid trapezoidal, Diamond, Wave-shape, Curve-shape, U-profile, L-profile, T-profile, H-profile, and any customized design.
Production Process	Aluminum Extrusion, Fabrication, Anodizing, etc. We can provide Aluminum with All-In-One service.
Fabrication	Machining,CNC, Sawing, Milling, Punching, Lathing, Tapping, Chamfering, Laser, Welding, Bending Assembling, etc.
Application	Industrial, Aluminum Enclosure, Advertising Equipments, Office Furniture and Partitions, Windows & Door, curtain walls, ceiling, Heat sink, LED strip, Standard Profile, Medical equipment, DIY Equipment/ Furniture, electric products
Certificate and Standard	ISO9001-2008/ISO 9001:2008 SGS,
Packing	1.EP Paper inside for each profile separate then Craft Paper/Shrink Film outside 2.EP Paper inside for each profile separate then carton paper then pallet 3.wooden carton
MOQ	1000 kgs *More or less is acceptable, but it depends on drawings, material and fabrication requirements.

Applications:

Aluminum profile used in cars, trains machinery ,electronics, medical and other industrial filed . In terms of hardware, machinery, electromechanical parts, solar PV products, aluminum frames are adopt as important auxiliary materials. We also have aluminum profiles for radiators, fitness machinery, buildings, lighting instrument, windpipes, oil pipelines, for instance.

Competitive Advantage:

- 1.good quality aluminium profile with economic price
- 2.Advanced technical equipments
- 3.Strong R&D team to meet the various needs .
- 4.15-year manufacturing experience
- 5.ISO9000
- 6.100% strict quality testing before delivery .

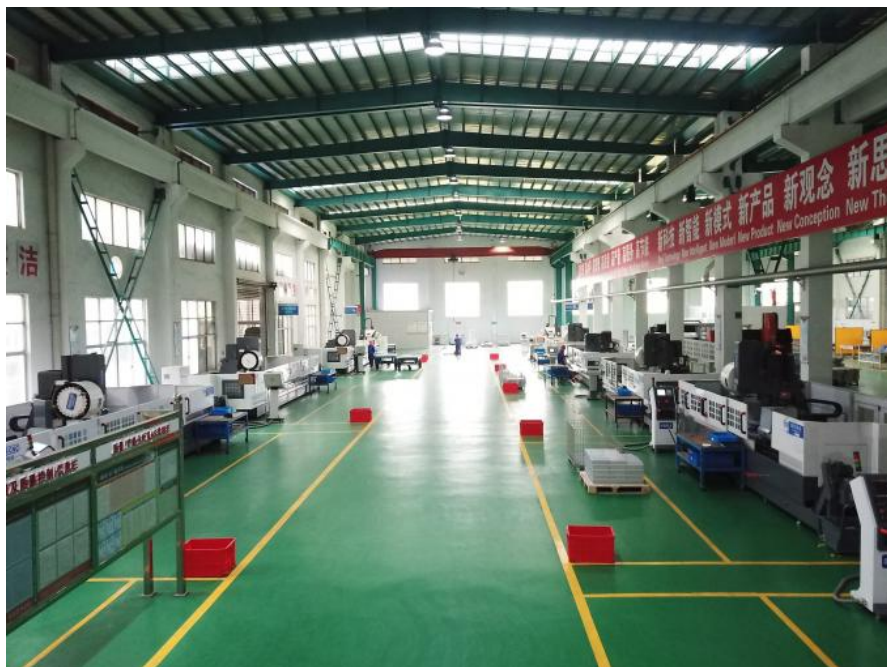
Extrusion Line :



Anodizing Line :



CNC Machining Work Shop :



Packing Work Shop :



FAQ For Saving Your Precious Time!

Q1:What's the thickness for anodizing?Can you do 15um?

A:Our normal thickness is about 10 um.Yes, we can do 15um and above.

Q2:What color you can do for powder coating?The thickness for powder coat?

A:We can do any color for powder coat as long as you can provide the color sample.Our normally powder coating thickness is 60-80um.

Q3:What color you can do for wood grain?

A:Our most popular colors are Western Red Cedar, Australia Cedar, Jarrah I, Jarrah II, Chestnut, Bush Cherry, Bush Wood, Western Wood, Snow Gum, etc.If you need any other colors, we can do according to the color samples you provide.

Q4:How's the weather resistance for wood grain finish D1010?

A:(1).Powder:Akzo Noble Interpon D1010.

(2).Wood grain film:Italian Memphis.

(3).Standard complied:American AAMA Standard.2603

(4).UV test:1000 hours.

(5).Salt spraying test:1000 hours.

(6).Normal weather:10 years color guarantee.

Q5:What certification do you have?What's your standard?

A:We have ISO certification.Our standard is DIN, AAMA, AS/NZS, China GB.

Q6:What's the delivery time for samples and mass production?
A:(1).2-3 weeks to make the new moulds and make free samples.
(2).3-4 weeks after receipt of deposit and confirmation of the order.



 +86-13861643436  aluminum@hentec.com.cn  aluminumextrusion-profiles.com

Qinfeng Road No.555 Huashi Town Jiangyin Jiangsu China (mainland) 214421