



Silkscreen Printing Aluminum Extrusions For Electronics / Customized Power AMP Box / OEM Circuit Enclosure

Our Product Introduction

for more products please visit us on aluminumextrusion-profiles.com

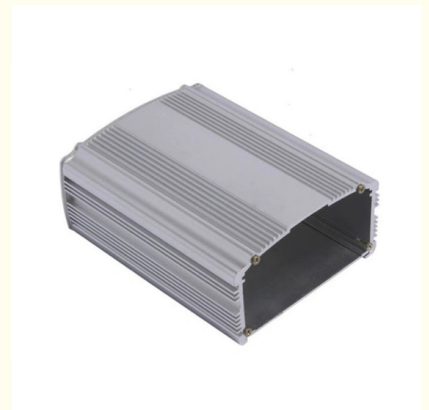
Basic Information

- Place of Origin: China
- Brand Name: MetalPlus
- Certification: CA ,CE
- Minimum Order Quantity: 500pcs
- Packaging Details: Ep paper ,kraft ,pallet
- Delivery Time: 20days
- Payment Terms: T/T ,L/C
- Supply Ability: 100 000ton each month



Product Specification

- Product Name: Aluminum Enclosure
- Alloy: 6063 6005 6061
- Material: Aluminium
- Surface Treatment: Mill Finished, Anodized ,Electrophoretic Coated, Powder Spray Coated
- Deep Process: Milling, Drilling, Bending, Cutting
- Temper: T4, T5, T6 ,T66
- Highlight: **OEM Aluminum Extrusions For Electronics, Silkscreen Printing Aluminum Extrusions, Customized Aluminum Extrusions For Electronics**



Product Description

Silkscreen Printing Aluminum Extrusions For Electronics / Customized Power AMP Box / OEM Circuit Enclosure

MetalPlus manufacture a wide range of high quality and customized standardized enclosures. We offer a variety of electronic industrial enclosures: aluminum profile housing, , die-cast aluminum box , standard aluminum chassis, rack mount housing, CNC precision machined parts, etc...

One of our special advantages is the custom aluminum profile housing. Use state-of-the-art CNC processing equipment to manufacture enclosures based on customer's exact specifications. We can deliver finished products on time and in a timely manner.

Product Description

- 1. Material:** Aluminium alloy 6063,6082,6061, 6005,6060 or customized
- 2. Temper:** T5, T6
- 3. Quality standard:** GB5237-2008
- 4. Surface treatment:** Mill finish,alodine, anodized, powder painted, electrophoresis, sand blasting etc. PVDF , wood grain painting, matted, polishing
- 5. Color available:** Silver, Bronze, champagne ,Matte,Natural for andodizing, Ral color
- 6. Packing details:** Wooden case or pallet
- 7. Samples time:**15days
- 8. Delivery:** 25 days
- 9. Production Capacity:** 5000MT/Month
- 10. MOQ:** 1 ton
- 12. Payment terms:** 30% deposit
- 13. Port:** Shanghai Port
- 14.** 44 press extruder
- 15.** OEM & ODM service.

Warranty

1. GB5237-2008 equal to EN12020-1.2(2001);
2. GB6892-2006 equal to DIN 1725
3. Within 15 years without color changing, all life without surface peeling off;

Moulding

we open the new die within 10days

Applications:

Industry Aluminum profile used in cars, trains machinery ,electronics, medical and other industrial filed . In terms of hardware, machinery, electromechanical parts, solar PV products, aluminum frames are adopt as important auxiliary materials. We also have aluminum profiles for radiators, fitness machinery, buildings, lighting instrument, windpipes, oil pipelines, for instance.

Specifications:

1. Primary Technical Data

1)Chemical composition

| Alloy | Si | Fe | Cu | Mn | Mg | Cr | Zn | Ti | Impurity | Al |
|-------|---------|---------|----------|------|----------|-----------|------|------|----------|------|
| 6063 | 0.2-0.6 | 0.35 | 0.1 | 0.1 | 0.45-0.9 | 0.1 | 0.1 | 0.1 | 0.15 | Rest |
| 6061 | 0.4-0.8 | 0.7 | 0.15-0.4 | 0.15 | 0.8-1.2 | 0.04-0.35 | 0.25 | 0.15 | 0.15 | Rest |
| 6060 | 0.3-0.6 | 0.1-0.3 | 0.1 | 0.1 | 0.35-0.6 | - | 0.15 | 0.1 | 0.15 | Rest |
| 6005 | 0.6-0.9 | 0.35 | 0.1 | 0.1 | 0.40-0.6 | 0.1 | 0.1 | 0.1 | 0.15 | Rest |

2) Mechanical property

| Alloy | Temper | Tensile strength | Yield strength | Elongation |
|-------|--------|------------------|----------------|------------|
| 6063 | T5 | ≥ 160Mpa | ≥ 110Mpa | ≥ 8% |
| | T6 | ≥ 205Mpa | ≥ 180Mpa | ≥ 8% |
| 6061 | T6 | ≥ 265Mpa | ≥ 245Mpa | ≥ 8% |

2. Specifications:

Excellent material with smooth and subtle edges.
Elegant appearance.
Surface treatment: colorful anodized or electrostatic powder coated.
Suitable for industrial purposes.
Customized surface finishes are welcome.


Our Advantages:

1. 15+ years experience in providing ONE-STOP customized aluminium extrusion and machining solution; 11+ years of exporting to many countries;
2. ISO: 9001:2008, RoHS, SGS, Reach, D&B
3. 100% new material
4. Competitive prices with short lead-time for both tooling and parts, because we do everything in-house



 **HENTEC** Hentec Industry Co.,Ltd

 +86-13861643436

 aluminum@hentec.com.cn

 aluminumextrusion-profiles.com

Qinfeng Road No.555 Huashi Town Jiangyin Jiangsu China (mainland) 214421