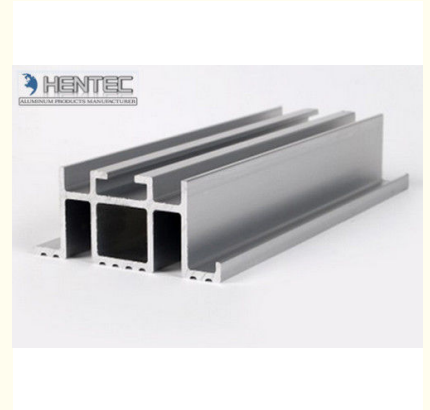




## Extruded 6061 - T6 Industrial Aluminium Profiles For Bathroom / Living Room

### Basic Information

- Place of Origin: China
- Brand Name: HT
- Certification: CA ,CE ,ISO14001:2004, ISO9001:2000
- Model Number: HTL0545
- Minimum Order Quantity: 1 ton
- Packaging Details: Ep paper ,kraft ,pallet
- Delivery Time: 20days
- Payment Terms: T/T ,L/C
- Supply Ability: 100 000ton each month



### Product Specification

- Highlight: **aluminum extrusion profiles ,  
aluminium extruded profiles**

## Product Description

### 6061 - T6 Industrial Extruded Aluminium Profiles Anodized For Bathroom / Living Room

- 1.Alloy :6063,6061,6005,6060
- 2.Material:Aluminum
- 3.Temper: T4, T5, T6 ,T66
- 4.Deep process: Milling, Drilling, Bending,Cutting

#### Description:

|              |  |
|--------------|--|
| Item         | Industrial Extruded Aluminium Profiles 6063-T5 Anodized For Bathroom / Living Room   |
| Material     | Alloy 6063, 6061,6005 ,6060or according to customer's choice   |
| Temper       | T4, T5, T6,T66   |
| Surface      | Anodize (clear, satin, bronze, black, golden, silver, other multicolor) , electrophoresis, powder coating, PVDF coating, wood grain painting, etc. |
| MOQ          | 1 ton. Usually 12 tons for a 20 feet container; 24 tons for a 40 feet container.   |
| Profile type | Industry Aluminum profile used in cars, trains machinery ,trailers ,electronics, medical and other industrial filed .                              |
| Machining    | High-precision machining 1. milling; 2. Drilling; 3. Bending; 4. Cutting ...   |
| Moulding     | 1. Using our moulds, free; 2. Using customer' s drawing, mould fee need to be paid .   |
| Standard     | GB/T5237-2004, GB/T6892-2000   |
| FOB Port     | Shanghai, etc.   |

#### Applications:

Industry Aluminum profile used in cars, trains machinery ,electronics, medical and other industrial filed . In terms of hardware, machinery, electromechanical parts, solar PV products, aluminum frames are adopt as important auxiliary materials. We also have aluminum profiles for radiators, fitness machinery, buildings, lighting instrument, windpipes, oil pipelines, for instance.

#### Specifications:

##### 1.Primary Technical Data

###### 1)Chemical composition

| Alloy | Si      | Fe      | Cu       | Mn   | Mg       | Cr        | Zn   | Ti   | Impurity | Al   |
|-------|---------|---------|----------|------|----------|-----------|------|------|----------|------|
| 6063  | 0.2-0.6 | 0.35    | 0.1      | 0.1  | 0.45-0.9 | 0.1       | 0.1  | 0.1  | 0.15     | Rest |
| 6061  | 0.4-0.8 | 0.7     | 0.15-0.4 | 0.15 | 0.8-1.2  | 0.04-0.35 | 0.25 | 0.15 | 0.15     | Rest |
| 6060  | 0.3-0.6 | 0.1-0.3 | 0.1      | 0.1  | 0.35-0.6 | -         | 0.15 | 0.1  | 0.15     | Rest |
| 6005  | 0.6-0.9 | 0.35    | 0.1      | 0.1  | 0.40-0.6 | 0.1       | 0.1  | 0.1  | 0.15     | Rest |

###### 2)Mechanical property

| Alloy | Temper | Tensile strength | Yield strength | Elongation |
|-------|--------|------------------|----------------|------------|
| 6063  | T5     | ≥ 160Mpa         | ≥ 110Mpa       | ≥ 8%       |
|       | T6     | ≥ 205Mpa         | ≥ 180Mpa       | ≥ 8%       |
| 6061  | T6     | ≥ 265Mpa         | ≥ 245Mpa       | ≥ 8%       |

#### Competitive Advantage:

- 1)Engineering design and support.
- 2)Aluminum profiles deeply processing:cutting,punching,drilling,milling,and fabricating.
- 3)High Quality system, strictly inspection during production and whole inspection before package.
- 4)Good performance, product warranty for 15 years.



 **HENTEC** Hentec Industry Co.,Ltd

 +86-13861643436

 [aluminum@hentec.com.cn](mailto:aluminum@hentec.com.cn)

 [aluminumextrusion-profiles.com](http://aluminumextrusion-profiles.com)

Qinfeng Road No.555 Huashi Town Jiangyin Jiangsu China (mainland) 214421