

Customized Dimension 6000 Series T3-T8 Temper Aluminum Extrusion Profile for Industrial Applications

Our Product Introduction

for more products please visit us on aluminumextrusion-profiles.com

Basic Information

- Certification: ISO
- Minimum Order Quantity: 1
- Price: 2980

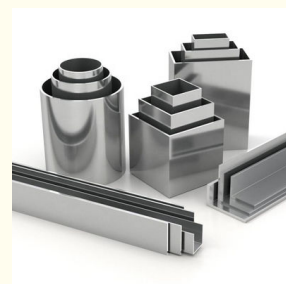


Product Specification

- Model NO.: Aluminum Frame
- Type: Window & Door Aluminium Profile, Decoration Aluminium Profile
- Shape: T - Profile
- Grade: 6000 Series
- Temper: T3-T8
- Window Series: 60 Series
- Alloy: Alloy
- Surface Finishing: Powder Spraying
- Alloying Ingredient: 6063
- Polishing Type: Chemical Polishing
- Surface Treatment: Anodized
- Processing: Extrusion, Cutting, Milling
- Tolerance: $\pm 0.1\text{mm}$
- Section Size: Square: $\leq 150*150\text{mm}$, Rectangle: $\leq 250*150\text{mm}$, Round: $\leq \varnothing 130\text{mm}$



More Images



Product Description

Customize Dimension Aluminum Anodized Frame Extrusion Profile

Product Specifications

Available Materials: Aluminum 6063

Finish Options: Powder coating, Anodizing (Oxidation), Sandblasting, Brushing, Painting, Passivation, Silk screen, Polishing, Galvanizing, (Nickel/Tin/Chrome/Copper) Plating

Tolerance: $\pm 0.1\text{mm}$

Section Size: Square: $\leq 150 \times 150\text{mm}$, Rectangle: $\leq 250 \times 50\text{mm}$, Round: $\leq \varnothing 170\text{mm}$

Applications

Auto parts
Household Electric Appliances
Medical equipment
Fitness equipment
Electrical machinery
3D printer components
Computer cases and enclosures
Industrial manipulative computers
Machine frames and enclosures
Tool cabinets and storage systems

Chemical Composition

Alloy	Si	Fe	Cu	Mn	Mg	Cr	Zn	Ti	Impurity	Al
6063	0.2-0.6	0.35	0.1	0.1	0.45-0.9	0.1	0.1	0.1	0.15	Rest
6061	0.4-0.8	0.7	0.15-0.4	0.15	0.8-1.2	0.04-0.35	0.25	0.15	0.15	Rest
6060	0.3-0.6	0.1-0.3	0.1	0.1	0.35-0.6	-	0.15	0.1	0.15	Rest
6005	0.6-0.9	0.35	0.1	0.1	0.40-0.6	0.1	0.1	0.1	0.15	Rest

Mechanical Properties

Alloy	Temper	Tensile Strength	Yield Strength	Elongation
6063	T5	$\geq 160\text{Mpa}$	$\geq 110\text{Mpa}$	$\geq 8\%$
6063	T6	$\geq 205\text{Mpa}$	$\geq 180\text{Mpa}$	$\geq 8\%$
6061	T6	$\geq 265\text{Mpa}$	$\geq 245\text{Mpa}$	$\geq 8\%$

Technical Support

Custom design services including CAD drawings and 3D models
Professional R&D team for design optimization and cost reduction
Complete "one-stop" production from design to surface treatment
Strict quality control throughout the manufacturing process

Production Capabilities

Extrusion: 44 aluminum extrusion lines with maximum outer diameter of 350mm
Anodizing: 6 production lines with uniform oxidation film thickness
Painting: 4 powder spraying lines using Gema Switzerland nozzles
CNC Machining: 12 PRATIC machining centers for complex profile processing

Quality Assurance

Strict inspection procedures for all anodized products
Defective products are scrapped or reprocessed
No color difference between batches
ISO9001 certified production standards

Notable Projects

Soccer City

Stadium: Supplied aluminum for Africa's largest stadium in Johannesburg

Lobster Trailers: Partnered with Nordic trailer manufacturer for optimized designs

School Furniture: Supplied aluminum legs for school desks



+86-13861643436



aluminum@hentec.com.cn



aluminumextrusion-profiles.com

Qinfeng Road No.555 Huashi Town Jiangyin Jiangsu China (mainland) 214421