



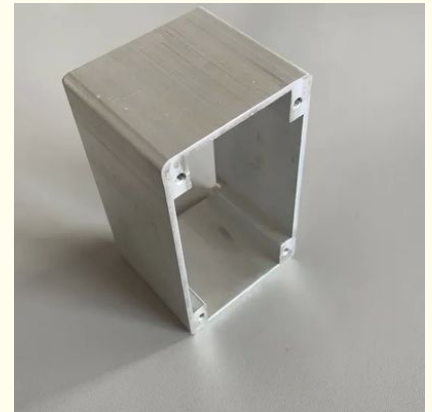
CNC Customized Industrial Grade Aluminum Profile Enclosure with Customized Dimension for Electrical Housing

Our Product Introduction

for more products please visit us on aluminumextrusion-profiles.com

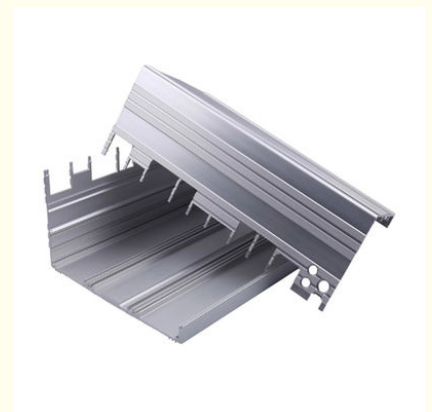
Basic Information

- Certification: ISO
- Minimum Order Quantity: 100
- Price: 1.99



Product Specification

- Material: Aluminium Alloy 6063, 6061, 6082, 6005
- Temper: T5, T6
- Surface Treatment: Anodized, Powder Coated, Electrophoresis, Sand Blasting
- Color Options: Silver, Black, Gold, Champagne, Custom
- Processing Method: CNC Milling
- Alloying Ingredient: 6063
- Tensile Strength: $\geq 160\text{Mpa}$ (T5), $\geq 205\text{Mpa}$ (T6)
- Yield Strength: $\geq 110\text{Mpa}$ (T5), $\geq 180\text{Mpa}$ (T6)
- Elongation: $\geq 8\%$
- Production Capacity: 100,000 Tons/year
- Extrusion Diameter: Up To 350mm
- Maximum Profile Diameter: 600mm
- CNC Machining Length: Up To 6 Meters
- Punching Thickness: Over 5mm



More Images



Product Description

CNC Customized Aluminum Profile Enclosure Shell Electrical Housing



About Metalplus

Metalplus specializes in aluminum industrial profile design and manufacturing with a production base of more than 100,000 square meters and annual capacity exceeding 100,000 tons.

Product Navigation

Aluminum Profile

[Aluminum Fan Blade Profiles](#)
[Aluminum Profile System](#)
[Aluminum Extrusion Enclosure](#)
[LED Aluminum Extrusion Profiles](#)
[Aluminum Frame](#)
[Customized Aluminum Profile](#)
[Aluminum Heat Sink](#)
[Electric Motor Housing Aluminum profile](#)
[Construction Aluminum Profile](#)
[Aluminum Extrusion Tube](#)

Die Casting

[Die Casting Led Housing](#)
[Stainless Steel Casting](#)
[Aluminum Casting](#)

ACP

[Aluminum Composite Panel](#)

Product Specifications

Material: Aluminum alloy 6063, 6061, 6082, 6005 or according to requirement

Temper: T5, T6

Quality standard: GB5237-2008

Surface treatment: Mill finish, anodized, powder coated, electrophoresis, sand blasting etc. PVDF coating, wood grain painting, matted, polishing bright

Color available: Silver, Bronze, champagne, Matte, Natural for anodizing, Ral for powder coating

Packing details: Protected film inside and shrinking film outside

Samples time: two weeks after receiving the mold fee

Delivery: 20 days after deposit

Production Capacity: 100,000 tons/year

MOQ: 1 TONS

Payment terms: 1) T/T 2) L/C at sight

Port: SHANGHAI PORT

17 press extruder

OEM & ODM service

Manufacturing Process

Die design → Die making → Extruding → Cutting → CNC Machining → Surface treatment → Packing

Product Advantages

Superior Heat Dissipation

The aluminum alloy motor housing maintains temperature within optimal range during continuous operation due to aluminum's excellent thermal properties.

Lightweight Construction

Aluminum extrusion products significantly reduce weight for easier transportation and installation while maintaining structural integrity.

Excellent Plasticity

Aluminum alloys offer superior ductility and plasticity compared to steel and cast iron, allowing for more design flexibility.

Environmental Benefits

Our aluminum housing motors feature waterproof, dustproof, and corrosion-resistant properties with energy-efficient performance and long service life.

Technical Parameters

Chemical Composition

Alloy	Si	Fe	Cu	Mn	Mg	Cr	Zn	Ti	Impurity	Al
6063	0.2-0.6	0.35	0.1	0.1	0.45-0.9	0.1	0.1	0.1	0.15	Rest
6061	0.4-0.8	0.7	0.15-0.4	0.15	0.8-1.2	0.04-0.35	0.25	0.15	0.15	Rest
6060	0.3-0.6	0.1-0.3	0.1	0.1	0.35-0.6	-	0.15	0.1	0.15	Rest
6005	0.6-0.9	0.35	0.1	0.1	0.40-0.6	0.1	0.1	0.1	0.15	Rest

Mechanical Properties

Alloy	Temper	Tensile strength	Yield strength	Elongation
6063	T5	≥ 160Mpa	≥ 110Mpa	≥ 8%
6063	T6	≥ 205Mpa	≥ 180Mpa	≥ 8%
6061	T6	≥ 265Mpa	≥ 245Mpa	≥ 8%

Technical Support

Our team provides comprehensive design support including CAD drawings and 3D models for customer confirmation, followed by custom mold creation and precision extrusion.

For clients with existing designs, our R&D team optimizes for production efficiency and cost-effectiveness while maintaining performance requirements.

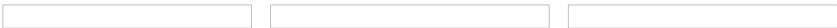
Our one-stop service covers product design, mold customization, aluminum bar melting, extrusion profiling, precision machining, and surface treatment with strict quality control throughout the process.



Production Capabilities

Extrusion

With 44 aluminum extrusion lines including a 6800 ton unit, we produce industrial profiles up to 600mm diameter for applications including radiators, fan blades, motor enclosures, and solar cell frames.



Anodizing

Our 6 anodizing lines produce uniform oxidation films that enhance corrosion resistance, hardness, and wear resistance. Available in silver, black, gold, champagne, and imitation steel colors with custom options available.

Painting

Four powder spraying lines using Swiss Gema nozzles apply environmentally friendly paint with excellent adhesion and color retention.

CNC Machining

12 PRATIC machining centers handle complex profiles up to 6 meters

Wegoma automatic cutting machines for precision cutting

30 punching machines (50-100 ton capacity) for thick profiles
10 stretch bending machines for precise angle bending
10 milling machines for various plane machining

Packing & Shipping

Finished products are carefully packaged with protective film and undergo strict quality inspection before shipment. Our organized warehouse system ensures accurate product tracking.

Certifications

Company History

2004: Recognized Brand of the Building Industry Material Market
2006: Certificate for Product Exemption from Quality Surveillance Inspection & ISO9001
2009: Advanced Company, Jiangsu Famous Brand Certificate, Credible Product of Quality in Jiangsu Province
2012: Established business relationships with Panasonic and LG
2015: Became innovative producer and supplying partner for European clients
2017: Developed new baseboard heater products
2019: Partnered with world's largest heater manufacturers as aluminum shell supplier
2023: Expanding overseas distribution network for mutual benefits

Notable Projects

Soccer City Stadium, Johannesburg: As main aluminum supplier for Africa's largest stadium (94,000 seats), our products contributed to this landmark project.

Lobster Trailers: Our optimized aluminum solutions for this Nordic trailer manufacturer demonstrate our design and production capabilities.

School Furniture Project: Supplied aluminum legs for school desks, showcasing our ability to support local education initiatives.



+86-13861643436

aluminum@hentec.com.cn

aluminumextrusion-profiles.com

Qinfeng Road No.555 Huashi Town Jiangyin Jiangsu China (mainland) 214421