



## PVDF Electrophoresis Wooden Grain Custom Elevator Aluminium Profile with Sandblast and Anodizing

Our Product Introduction

for more products please visit us on [aluminumextrusion-profiles.com](http://aluminumextrusion-profiles.com)

### Basic Information

- Certification: SONCAP, ISO, RoHS, TUV
- Minimum Order Quantity: 500
- Price: 1

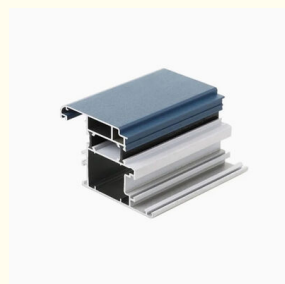
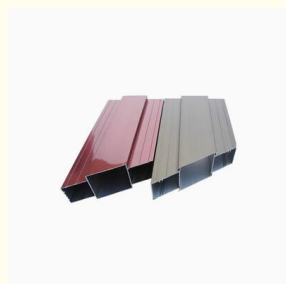


### Product Specification

- Model NO.: Elevator Aluminum Profile
- Grade: 6000 Series
- Temper: T3-T8
- Alloy: 6063
- Surface Finishing: Anodic Oxidation
- Size: 3m - 6m Per Piece
- Thickness: 0.8 - 5.0mm
- Anodized Thickness: 8 - 25um
- Powder Coated Thickness: 60- 120um
- Tensile Strength:  $\geq 160\text{Mpa}$  (T5),  $\geq 205\text{Mpa}$  (T6)
- Yield Strength:  $\geq 110\text{Mpa}$  (T5),  $\geq 180\text{Mpa}$  (T6)
- Elongation:  $\geq 8\%$
- Production Capacity: 50000PCS /Month
- Extrusion Diameter: 400\*150mm And  $\phi 360$
- MOQ: 500kgs



### More Images



## Product Description

### Custom Aluminum Elevator Profiles

Our 4500T grade extrusion machine enables production of custom sections up to 400×150mm and  $\phi 360$ . We welcome your drawings and provide complete pricing breakdowns including aluminum ingot costs, extrusion, surfacing, and additional services. We also supply fully assembled premium grade window and door systems.

### Product Specifications

Item	Oxidation Construction Aluminum Profile / Aluminum Elevator Profile
Material	Aluminium 6000 series alloy: 6063, 6005, 6061
Temper	T4, T5, T6
Size	3m - 6m per piece, or customized
Shape	Round, square, flat, hollow, oval, triangle, U-profile, L-profile, T-profile, custom available
Thickness	0.8 - 5.0mm
Application	Elevator

### Surface Treatment Options

Surface Treatment	Mill-finish, anodized, powder coated, electrophoresis, brushed
Anodized Color	Silver, black, champagne, bronze, gold or customized
Anodized Thickness	8 - 25 $\mu$ m
Electrophoresis Color	Silver, black, champagne, bronze, gold or customized
Powder Coated Color	Customized
Powder Coated Thickness	60 - 120 $\mu$ m
Guarantee	Surface color stability for 10-20 years indoor use

### Packaging Options

Bundles Packing	Inside: EP foam protection for each piece Outside: Waterproof craft paper wrapping
Carton Packing	Inside: Individual plastic bag per piece Outside: Multiple quantities in cartons
Wood Pallet Packing	Inside: Bundles or cartons packing Outside: Multiple bundles/cartons on wood pallets
Customized Requirement	Customized packing requirements available

### Service Details

MOQ	500kg per item; Typically 13-15 tons for 20GP; 25 tons for 40HQ
OEM Service	Drawing, sample, or design service offered by customer
Production Capacity	5,000 metric tons monthly
Deep Processing	CNC, drilling, milling, cutting, bending, tapping, welding, assembling, punching
Brand Name	HENTEC
Certificates & Standards	ISO9001-2008, ISO14001, SGS
Delivery Time	Die development & sample testing: 12-18 days Mass production: 20-30 days after sample confirmation

Payment Terms	T/T, L/C
FOB Port	Shanghai
Settlement Terms	Final actual weight or drawing theoretical weight

## Applications

Industrial aluminum profiles used in automotive, railway, machinery, electronics, medical, and other industrial fields. Aluminum frames serve as important auxiliary materials for hardware, machinery, electromechanical parts, and solar PV products. We also provide profiles for radiators, fitness equipment, construction, lighting instruments, ventilation ducts, and oil pipelines.

## Technical Data

### Chemical Composition

Alloy	Si	Fe	Cu	Mn	Mg	Cr	Zn	Ti	Impurity	Al
6063	0.2-0.6	0.35	0.1	0.1	0.45-0.9	0.1	0.1	0.1	0.15	Rest
6061	0.4-0.8	0.7	0.15-0.4	0.15	0.8-1.2	0.04-0.35	0.25	0.15	0.15	Rest
6060	0.3-0.6	0.1-0.3	0.1	0.1	0.35-0.6	-	0.15	0.1	0.15	Rest
6005	0.6-0.9	0.35	0.1	0.1	0.40-0.6	0.1	0.1	0.1	0.15	Rest

### Mechanical Properties

Alloy	Temper	Tensile Strength	Yield Strength	Elongation
6063	T5	≥ 160MPa	≥ 110MPa	≥ 8%
6063	T6	≥ 205MPa	≥ 180MPa	≥ 8%
6061	T6	≥ 265MPa	≥ 245MPa	≥ 8%

## Technical Support

- Custom design services including CAD drawings and 3D models for extruded profiles
- Professional R&D team for design analysis and optimization to reduce costs and improve performance
- Complete "one-stop" service from product design to surface treatment with quality control throughout production

## Factory Equipment & Capabilities

### Extrusion

44 aluminum extrusion lines with PLC control systems, capable of producing commercial and industrial profiles up to 350mm outer diameter. Our largest 6800-ton extruder handles complex profiles up to 600mm diameter for radiators, industrial fan blades, motor enclosures, solar cell frames, and architectural applications.

### Anodizing

6 anodizing production lines creating uniform oxidation films for improved corrosion resistance, hardness, and wear resistance. Available in silver, black, gold, champagne, and imitation steel colors with strict quality control and re-processing of non-conforming products.

### Painting

4 powder spraying lines using Gema Switzerland nozzles with environmentally friendly, durable paints featuring strong adhesion and color retention.

### CNC Machining

Advanced machining equipment including 12 PRATIC machining centers for profiles up to 6 meters, automatic cutting machines from Wegoma, 30 punching machines (50-100 tons), bending machines, and milling machines for comprehensive processing capabilities.

## Packing and Shipping

Manual packaging with strict warehouse management procedures, section-based storage, and thorough examination before delivery.

## Certifications

## Company History

- 2004: Recognized brand of building industry material market
- 2006: Product exemption certificate and ISO9001 certification
- 2009: Advanced company, Jiangsu famous brand, credible product quality certificate
- 2012: Established relationships with Panasonic and LG
- 2015: Innovative producer and supplier for German clients
- 2017: Developed new baseboard heater products
- 2019: Supplier for world's largest heater manufacturers
- 2023: Expanding overseas distributor network

## Notable Projects

### Soccer City Stadium, Johannesburg

Main aluminum supplier for Africa's largest capacity stadium (94,000 seats), contributing to this major South African project that received unanimous praise.

### Lobster Trailers

Collaboration with Nordic trailer giant featuring design optimization and advanced processing to minimize costs and enhance product performance.

### School Desk Project

Supplied aluminum legs for school desks, supporting local customer Dadn's successful bid with strong design capabilities and mature technology.



+86-13861643436    aluminum@hentec.com.cn    aluminumextrusion-profiles.com

Qinfeng Road No.555 Huashi Town Jiangyin Jiangsu China (mainland) 214421