



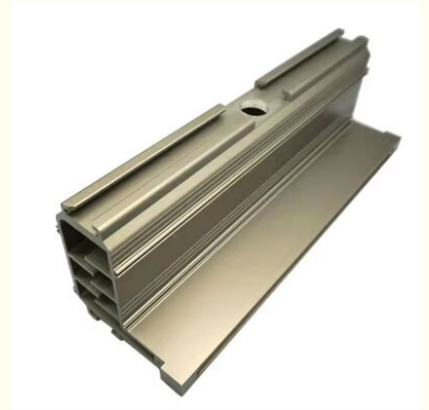
Custom Industrial Extruded Full Surface Anodized AA25 Aluminium CNC Profile

Our Product Introduction

for more products please visit us on aluminumextrusion-profiles.com

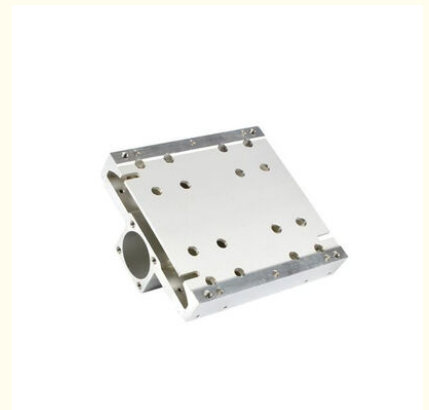
Basic Information

- Certification: ISO
- Minimum Order Quantity: 2
- Price: 2980

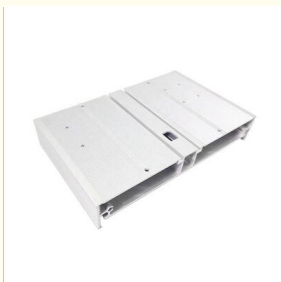


Product Specification

- Model NO.: Aluminium Profile
- Type: Decoration Aluminium Profile, Industrial Aluminium Profile
- Shape: Customized
- Grade: 6000 Series
- Temper: T3-T8
- Window & Door Aluminium Profile: 60 Series
- Alloy: Alloy
- Surface Finishing: Powder Spraying
- Alloying Ingredient: 6063
- Polished Aluminum Profile: Chemical Polishing
- Dimension: Customized
- Surface Treatment: Anodized
- Color: Customized
- Process: Extrusion, Cutting, Milling



More Images



Product Description

Custom Industrial Extruded Full Surface Anodized AA25 Aluminium CNC Profile

Products Navigation

Metalplus specializes in aluminum industrial profile design and manufacturing. Has a production base of more than 100,000 square meters, capacity more than 100,000 tons annually.

- [Aluminum Fan Blade Profiles](#)
- [Aluminum Profile System](#)
- [Aluminum Extrusion Enclosure](#)
- [LED Aluminum Extrusion Profiles](#)
- [Aluminum Frame](#)

Aluminum Profile [Customized Aluminum Profile](#)
[Aluminum Heat Sink](#)
[Electric Motor Housing Aluminum profile](#)
[Construction Aluminum Profile](#)
[Aluminum Extrusion Tube](#)
[Die Casting Led Housing](#)

Die Casting [Stainless Steel Casting](#)
[Aluminum Casting](#)

ACP [Aluminum Composite Panel](#)

Product Description

Item	Aluminum Extrusion Profile
Available Materials	Aluminum 6063, 6061, etc.
Finish	Powder coating, Anodizing(Oxidation), Sandblasting, Brushing, Painting, Passivation, Silk screen, Polishing, Galvanise,(Nickel/Tin/Chrome/Copper) Plating, etc.
Payment Terms	T/T : 30% before hand, balanced 70% before shipping;
Industry Focus	Appliance/ Automotive/ Agricultural/Electronics/ Industrial/ Marine/Mining/ Hydraulics/ Valves/Oil and Gas/ Electrical/ Construction/ machinery/furniture/ toy/ woodboard/ wall/ agricultural
Intended Applications	Auto parts; Household Electric Appliances; Medical equipments; Fitness equipments; Electrical machinery; 3D printer; Computer case; Desktop computer; Electrical Cabinet/box; Electronic product; Network chassis; Servers rack; Medicine cabinet; Industrial manipulative computer; Machine enclosure and Frame; Tool Cabinet and chest; Mountain /wall bracket;
Tolerance	+ 0.1mm
Section size	Square: ≤ 150*150mm Rectangle: ≤ 250*50mm Round: ≤ Ø170mm
Package	Inner plastic paper/PE paper interleaving each piece; Outer fixed by plywood or pallets with shipping mark; Or as required. Sample: within 10 days.
Lead Time	Mass Production: within 10-25 days after receiving the deposit Rush Services Available

Our Advantages

We export the majority of our customized products to the United States and Europe, where our customers have become regulars. As a result of our long experience in this field, we can easily satisfy customers' needs.

- We do have more than 17 years manufacture experience on Aluminum Extrusion Area.
- We have a strong ability to design and Extrusion, CNC machining, Milling, Turning with a fast speed.
- We have complete metal processing machines, in addition to stamping, there are laser cutting, CNC bending, welding, etc.
- We attach great importance to the control of all steps of the manufacturing process, so we can maintain long-term stability and excellent quality.

Technical Support

1. Based on the customer's requirements, we help design the appearance of the extruded profiles, provide CAD drawings and 3D models for customer confirmation, customize the molds, and extrude the aluminum profiles that meet the customer's requirements.
2. For customers with design capabilities, our professional R&D team will analyze and optimize the design based on the customer's drawings and our experience in extrusion processing, using the most reasonable design to reduce production costs and improve product performance.
3. Our company adopts a "one-stop" service and production model, including product design, customized molds, aluminum bar melting and casting, extrusion profiling, precision machining, and surface treatment. We can effectively control the alloy composition of raw materials and maintain product accuracy throughout the production process, providing you with high-quality products.

Factory

Equipment

Extrusion

Equipped with 44 aluminum extrusion lines, MetalPlus is capable of producing various standards of commercial aluminum profiles and industrial aluminum profiles with maximum outer diameter of 350mm.

MetalPlus has 44 aluminum profile extrusion lines equipped with PLC control systems and precise molds. The largest extruder used in the MetalPlus factory is a 6800 ton unit. The machine is used for the production of industrial profiles in various shapes with a maximum diameter of 600mm. This allows us to satisfy the different requirements of our various customers. Some of the aluminum products produced by MetalPlus include radiators, industrial fan blades, motor enclosures, solar cell frames, doors, and windows.

MetalPlus can produce custom molds according to customer requirements. We have the abilities and experience to produce aluminum profiles with complex structures. We have our own R&D team so we can provide reasonable suggestions for our customers in order to create superior products at affordable prices.

Anodizing

Anodizing is a process in which a layer of aluminum oxide is formed on the surface of aluminum alloy products when they are placed in an electrolyte solution and then an electrical current is applied. Oxidized aluminum profiles feature improved corrosion resistance so that the surface can withstand various weather conditions. Meanwhile, the aluminum oxide also increases the product's hardness and wear resistance. MetalPlus has 6 anodizing production lines. The profiles processed in our anodizing lines feature uniform oxidation film thickness and color giving them a beautiful appearance. The oxidized profiles come in various color options including silver, black, gold, champagne, and imitation steel. Other colors can be customized upon request.

The anodized products will all be inspected by highly trained professional inspectors. Defective products which cannot be re-processed will be directly scrapped. Products with uneven color will be de-coated and re-anodized until they can meet the requirements. This ensures that there is no color difference among each batch of products.

Painting

Our factory is equipped with 4 powder spraying lines and all of them are using high-quality spray nozzles from Gema Switzerland. In the meantime, MetalPlus only uses safe and environmental friendly paint with strong adhesive force as well as durable color retention.

CNC Machining

MetalPlus is equipped with highly advanced machining equipment sets. All fine machining processes are accomplished by technicians with rich industry experience. Strict industrial standards are adopted during production to ensure fine machining precision and product quality.

1. MetalPlus has 12 PRATIC machining centers which can be used for the milling, drilling or tapping of profiles from different angles. They are especially suitable for the production of long profiles up to 6 meters. The equipment sets can realize machining of complex profiles with the simplest methods
2. MetalPlus has fully automatic cutting machines from Wegoma which can accomplish precise cutting with automatic and continuous material feeding, which means that the machines feature low labor cost and high production efficiency. Therefore, the cutting price of MetalPlus is significantly lower than that of the other enterprises in the industry.
3. We have 30 punching machines of which the punching pressure ranges from 50 to 100 tons. They can be used for the punching of relatively thick profiles of which the thickness can be over 5MM. There are also 10 stretch bending machines/bending machines which can realize bending of profiles to arc or different angles. The machining angle is highly precise. The factory is also equipped with 10 milling machines, realizing machining of different planes, bevels or grooves so that we can satisfy different machining requirements of our customers.

Packing & Shipping

Finished products are packaged manually and ready for delivery. MetalPlus adopts strict warehouse management procedures; the finished product warehouse is divided into sections to store specific products, any in & out transactions have to be recorded and each product has to be examined before delivering.

Certifications

Company History

IN 2004 "THE RECOGNIZED BRAND OF THE BUILDING INDUSTRY MATERIAL MARKET"

IN 2006 "CERTIFICATE FOR PRODUCT EXEMPTION FROM QUALITY SURVEILLANCE INSPECTION " AND "ISO9001"

IN 2009 "ADVANCED COMPANY "

IN 2009 "JIANGSU FAMOUS BRAND CERTIFICATE "

IN 2009 "CERTIFICATE FOR CREDIBLE PRODUCT OF QUALITY IN JIANGSU PROVINCE"

IN 2012, ESTABLISHED THE BUSINESS RELATIONSHIP WITH PANASONIC, LG.

IN 2015, BE AN INNOVATIVE PRODUCER AND SUPPLYING PARTNER FOR EUROPE CLIENT.

IN 2017, DEVELOPED THE NEW PRODUCTS OF BASEBOARD HEATERS .

IN 2019, COOPERATE WITH THE WORLD'S LARGEST HEATER MANUFACTURERS , AND SUPPLY THE ALUMINUM SHELLS FOR THEM .WON A GOOD REPUTATION !

IN 2023, WE WILL CONFIDENCE TO DEVELOP OVERSEA DISTRIBUTOR , TO EXPAND MARKET FOR WIN-WIN BENEFITS.

Project

The Soccer City Stadium, in Johannesburg is one of the major projects of South Africa, the 94,000 seat stadium is the largest capacity stadium in Africa.

We are very honored to participate in the construction of the project as the main supplier of aluminum!

The Soccer City Stadium won unanimous praise after it was built!

Lobster Trailers is a Nordic trailer giant ,we are very proud to cooperate with them.

Our professional R&D team analyze and improve upon Lobster's designs and then process them with our excellent processing equipment, exquisite technology.

We minimize production costs and improve product performance thanks our optimization proficiencies.

We are very glad that our local customer Dadn won the bid of the school project, and we supplied the Aluminum Legs of the school desks for them.

With our strong design and mature technics, we will help more customers to get the tender.