



UV Resistance PVD & Vacuum Electroplating Anti Corrosion Art Colorful Glossy Metallic Silvery Golden Coating Aluminum Hand Rail Profile

Our Product Introduction

for more products please visit us on aluminumextrusion-profiles.com

Basic Information

- Certification: SONCAP, ISO, RoHS, TUV
- Minimum Order Quantity: 10,000
- Price: 2.55

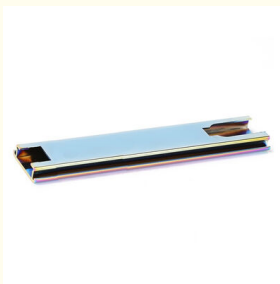


Product Specification

- Model NO.: Hand Rail Profile
- Grade: 6000 Series
- Temper: T3-T8
- Window & Door Aluminium Profile: 60 Series
- Alloy: Alloy
- Surface Finishing: Anodic Oxidation
- Alloying Ingredient: 6063
- Polished Aluminum Profile: Mechanical Polishing
- Surfacet Treatment: Anodizing/Powder Painting /Electrophoresis
- Logo: Silk Screen /Laser
- Colour: Customized
- Polish: Chemical/Mechanical Polish
- Machining: Tapping, Cutting, Milling
- Transport Package: Carton&Wooden Case



More Images



Product Description

UV Resistance PVD & Vacuum Electroplating Anti Corrosion Art Colorful Glossy Metallic Silvery Golden Coating Aluminum Hand Rail Profile

Product Description

Our 4500T grade extrusion machine enable us to produce any section within 400*150mm and ϕ 360.

Your drawings are definitely welcomed.

Price indication: basic aluminium ingot, extrusion cost, surfacing cost and extra.

We also supply fully assembled premium grade window&door systems

Product Specification

| | |
|--------------------|--|
| Item | PVD & Vacuum Electroplating Aluminum Profile |
| material | Iron & Steel & Aluminum & Zinc alloy |
| Size | Customized |
| Shape | round,square,flat,hollow,oval,triangle,U-profile,L-profile,T-profile,customized avaiable |
| Thickness | General profile thickness:0.8 - 5.0mm |
| Application | Elevator |

Surface treatment

| | |
|--------------------------------|---|
| Surface truement | PVD & Vacuum Electroplating ,Mill-finish,anodized,powder,coated,electropheresis , brushed |
| Anodized Color | Silver,black,chanpagne,bronze,gold or customized |
| Anodized thickness | 8 - 25um |
| Electrpheresis color | Silver,black,chanpagne,bronze,gold or customized |
| Powder coated Color | Customized |
| Powder coated thickness | 60- 120um |
| Guarantee | surface color can be stable for 10 - 20years indoor using |



Packing

| | |
|-------------------------------|--|
| Bundles Packing | Inside: packed with EP foam to protect each piece Outside: wrap to be bundles by waterproof craft paper |
| Carton packing | Inside: each pcs pack in one plastic bag; Outside: Numbers of quantity put in one carton. |
| Wood Pallet packing | Inside: Bundles or cartons packing Outside: Numbers of bundles or cartons laden on one wood pallet |
| Customized requirement | Customized packing requirement available |

Other service details

| | |
|----------------------------|--|
| MOQ | 500kgs for each item ;Usually 13 - 15tons for a 20Gp ;25 tons for a 40HQ |
| OEM service | Drawing , sample or design service offer by customer |
| Production Capacity | 5000 metric monthly |

| | |
|----------------------------------|---|
| Deep process | CNC ,drilling ,milling ,cutting ,bending ,tapping ,welding ,assembling ,punching |
| Brand Name | HENTEC |
| Certificates and Standard | ISO9001 - 2008. ISO14001 . SGS |
| Delivery time | Die developing and sample testing :12 - 18days ; Mass production :20 - 30days after confirming sample by buyer |
| Payment Terms | T/T , L/C |
| FOB port | Shanghai |
| Settlement Terms | charge by final actual weight or by drawing theoretical weight |

Applications:

Industry Aluminum profile used in cars, trains machinery ,electronics, medical and other industrial filed . In terms of hardware, machinery, electromechanical parts, solar PV products, aluminum frames are adopt as important auxiliary materials. We also have aluminum profiles for radiators, fitness machinery, buildings, lighting instrument, windpipes, oil pipelines, for instance.

Competitive Advantage:

- 1) Engineering design and support.
- 2) Aluminium profiles deeply processing:cutting,punching,drilling,milling,and fabricating.
- 3) High Quality system, strictly inspection during production and whole inspection before package.
- 4) Good performance, product warranty for 15 years.

Primary Technical

Data

1) Chemical composition

| Alloy | Si | Fe | Cu | Mn | Mg | Cr | Zn | Ti | Impurity | Al |
|-------|---------|---------|----------|------|----------|-----------|------|------|----------|------|
| 6063 | 0.2-0.6 | 0.35 | 0.1 | 0.1 | 0.45-0.9 | 0.1 | 0.1 | 0.15 | | Rest |
| 6061 | 0.4-0.8 | 0.7 | 0.15-0.4 | 0.15 | 0.8-1.2 | 0.04-0.35 | 0.25 | 0.15 | 0.15 | Rest |
| 6060 | 0.3-0.6 | 0.1-0.3 | 0.1 | 0.1 | 0.35-0.6 | | 0.15 | 0.1 | 0.15 | Rest |
| 6005 | 0.6-0.9 | 0.35 | 0.1 | 0.1 | 0.40-0.6 | 0.1 | 0.1 | 0.15 | | Rest |

2) Mechanical property

| Alloy | Temper | Tensile strength | Yield strength | Elongation |
|-------|--------|------------------|----------------|------------|
| 6063 | T5 | ≥ 160Mpa | ≥ 110Mpa | ≥ 8% |
| | T6 | ≥ 205Mpa | ≥ 180Mpa | ≥ 8% |
| 6061 | T6 | ≥ 265Mpa | ≥ 245Mpa | ≥ 8% |

Technical Support

1. Based on the customer's requirements, we help design the appearance of the extruded profiles, provide CAD drawings and 3D models for customer confirmation, customize the molds, and extrude the aluminum profiles that meet the customer's requirements.
2. For customers with design capabilities, our professional R&D team will analyze and optimize the design based on the customer's drawings and our experience in extrusion processing, using the most reasonable design to reduce production costs and improve product performance.
3. Our company adopts a "one-stop" service and production model, including product design, customized molds, aluminum bar melting and casting, extrusion profiling, precision machining, and surface treatment. We can effectively control the alloy composition of raw materials and maintain product accuracy throughout the production process, providing you with high-quality products.

Factory

Equipment

Extrusion

Equipped with 44 aluminum extrusion lines, MetalPlus is capable of producing various standards of commercial aluminum profiles and industrial aluminum profiles with maximum outer diameter of 350mm.

MetalPlus has 44 aluminum profile extrusion lines equipped with PLC control systems and precise molds. The largest extruder used in the MetalPlus factory is a 6800 ton unit. The machine is used for the production of industrial profiles in various shapes with a maximum diameter of 600mm. This allows us to satisfy the different requirements of our various customers. Some of the aluminum products produced by MetalPlus include radiators, industrial fan blades, motor enclosures, solar cell frames, doors, and windows.

MetalPlus can produce custom molds according to customer requirements. We have the abilities and experience to produce aluminum profiles with complex structures. We have our own R&D team so we can provide reasonable suggestions for our customers in order to create superior products at affordable prices.

Anodizing

Anodizing is a process in which a layer of aluminum oxide is formed on the surface of aluminum alloy products when they are placed in an

electrolyte solution and then an electrical current is applied. Oxidized aluminum profiles feature improved corrosion resistance so that the surface can withstand various weather conditions. Meanwhile, the aluminum oxide also increases the product's hardness and wear resistance. MetalPlus has 6 anodizing production lines. The profiles processed in our anodizing lines feature uniform oxidation film thickness and color giving them a beautiful appearance. The oxidized profiles come in various color options including silver, black, gold, champagne, and imitation steel. Other colors can be customized upon request.

The anodized products will all be inspected by highly trained professional inspectors. Defective products which cannot be re-processed will be directly scrapped. Products with uneven color will be de-coated and re-anodized until they can meet the requirements. This ensures that there is no color difference among each batch of products.

Painting

Our factory is equipped with 4 powder spraying lines and all of them are using high-quality spray nozzles from Gema Switzerland. In the meantime, MetalPlus only uses safe and environmental friendly paint with strong adhesive force as well as durable color retention.

CNC Machining

MetalPlus is equipped with highly advanced machining equipment sets. All fine machining processes are accomplished by technicians with rich industry experience. Strict industrial standards are adopted during production to ensure fine machining precision and product quality.

1. MetalPlus has 12 PRATIC machining centers which can be used for the milling, drilling or tapping of profiles from different angles. They are especially suitable for the production of long profiles up to 6 meters. The equipment sets can realize machining of complex profiles with the simplest methods
2. MetalPlus has fully automatic cutting machines from Wegoma which can accomplish precise cutting with automatic and continuous material feeding, which means that the machines feature low labor cost and high production efficiency. Therefore, the cutting price of MetalPlus is significantly lower than that of the other enterprises in the industry.
3. We have 30 punching machines of which the punching pressure ranges from 50 to 100 tons. They can be used for the punching of relatively thick profiles of which the thickness can be over 5MM. There are also 10 stretch bending machines/bending machines which can realize bending of profiles to arc or different angles. The machining angle is highly precise. The factory is also equipped with 10 milling machines, realizing machining of different planes, bevels or grooves so that we can satisfy different machining requirements of our customers.

Packing and Shipping

Finished products are packaged manually and ready for delivery. MetalPlus adopts strict warehouse management procedures; the finished product warehouse is divided into sections to store specific products, any in & out transactions have to be recorded and each product has to be examined before delivering.

Certifications

Company History

In 2004 "THE RECOGNIZED BRAND OF THE BUILDING INDUSTRY MATERIAL MARKET"

In 2006 "CERTIFICATE FOR PRODUCT EXEMPTION FROM QUALITY SURVEILLANCE INSPECTION " and "ISO9001"

In 2009 "ADVANCED COMPANY "

In 2009 "JIANGSU FAMOUS BRAND CERTIFICATE "

In 2009 "CERTIFICATE FOR CREDIBLE PRODUCT OF QUALITY IN JIANGSU PROVINCE"

In 2012, Established the business relationship with Panasonic , LG .

In 2015, be and innovative producer and supplying partner for Germany Client .

In 2017, Developed the new products of baseboard heaters .

In 2019, Cooperate with the world's largest Heater Manufacturers , and supply the Aluminum Shells for them . Won a good reputation !

In 2023, We will confidence to develop oversea distributor , to expand market for win-win benefits .

The Soccer City Stadium, in Johannesburg is one of the major project of south African ,the 94 000 seat stadium is the largest capacity stadium in Africa .

We are very honored to participate in the construction of the project as the main supplier of aluminum!

The Soccer City Stadium won unanimous praise after it was built!

Lobster Trailers is a Nordic trailer giant ,we are very proud to cooperate with them .
Our professional R&D team analyze and improve upon Lobster's designs and then process them with our excellent processing equipment , exquisite technology . We minimize production costs and improve product performance thanks our optimization proficiencies.

We are very glad that our local customer Dadnwon the bid of the school project , and we supplied the Aluminum Legs of the school desks for them .

With our strong design and mature technics ,we will help more customers to get the tender .