



## Pump Cylinder Shell Aluminum Customized Precision Investment Die Casting

Our Product Introduction

for more products please visit us on [aluminumextrusion-profiles.com](http://aluminumextrusion-profiles.com)

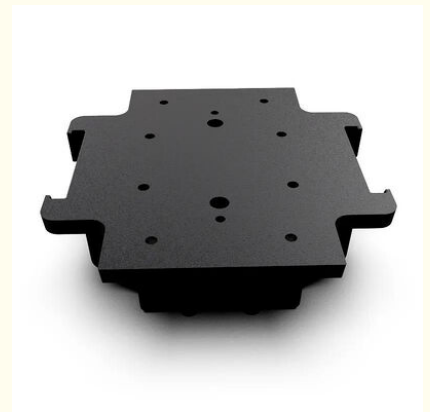
### Basic Information

- Certification: ISO 9001:2000
- Minimum Order Quantity: 100
- Price: 1.99



### Product Specification

- Material: Aluminum Alloy
- Surface Treatment: Anodizing
- Tolerance Grade: 7
- Casting Surface Quality: 12.5
- Casting Dimension Tolerance: CT7-CT8
- Casting Surface Roughness: Ra 12.5um
- Casting Weight Range: 0.1-100kg
- Max Linear Size: 1200mm
- Max Diameter Size: 600mm
- Machining Precision: Positioning Accuracy 0.008mm, Rep. Position. Accuracy 0.006mm
- Machining Surface Roughness: Ra0.8~6.3um
- Max Travel Of Spindle: 1800mmx850mmx700mm



### More Images



## Product Description

### Pump Cylinder Shell Aluminum Customized Precision Investment Die Casting

Metalplus specializes in aluminum industrial profile design and manufacturing with a production base of more than 100,000 square meters and annual capacity exceeding 100,000 tons.

### Product Portfolio

Aluminum Profile	Aluminum Fan Blade Profiles
Aluminum Profile System	
Aluminum Extrusion Enclosure	
LED Aluminum Extrusion Profiles	Die Casting
Aluminum Frame	Die Casting Led Housing
Customized Aluminum Profile	Stainless Steel Casting
Aluminum Heat Sink	Aluminum Casting
Electric Motor Housing Aluminum profile	ACP   Aluminum Composite Panel
Construction Aluminum Profile	
Aluminum Extrusion Tube	

### Product Description

Aluminum is the most frequently used material for aluminum castings to produce lightweight parts. The basic principle of low pressure casting involves filling aluminum molds with liquid aluminum alloy under low working pressure (0.06-0.15MPa) to obtain high-quality castings through controlled solidification.

Precision die casting parts are widely used in hardware components, automotive motor parts, machinery parts, medical equipment, and various industrial applications.

### Technical Specifications

<b>Material</b>	Aluminum Alloy, Carbon Steel, Alloy Steel, Stainless Steel
<b>Process</b>	Drawings → Mould Making → Die Casting → Rough Machining → CNC Machining → Surface Treatment → Product Checking → Packing → Delivery
<b>Casting Dimension Tolerance</b>	CT7-CT8
<b>Casting Surface Roughness</b>	Ra 12.5um
<b>Casting Weight Range</b>	0.1-100kg
<b>Casting Size</b>	Max linear size: 1200mm, Max diameter size: 600mm
<b>Machining Precision</b>	Positioning accuracy 0.008mm, Repeat positioning accuracy 0.006mm
<b>Machining Surface Roughness</b>	Ra0.8~6.3um
<b>Max Travel Of Spindle</b>	1800mm x 850mm x 700mm
<b>Max Turning Diameter</b>	1000mm
<b>Material Standard</b>	GB, ASTM, AISI, DIN, BS, JIS, NF, AS, AAR

<b>Surface Treatment</b>	Electroplating, Chrome Plating, Zinc Plating, Nickel plating, Electrophoresis, Anodization, Polishing, Powder coating, Sandblasting, Passivation, Spray painting, etc.
<b>Casting Process Type</b>	High Pressure Die Casting (HPDC), Vertical Low Pressure Die Casting (LPDC), Precision Sand Casting, Lost Foam Casting, Investment Casting, Metal Casting
<b>Service Available</b>	OEM & ODM
<b>Quality Control</b>	0 defects, 100% inspection before packing
<b>Application</b>	Train & railway, automobile & truck, construction machinery, forklift, agricultural machinery, shipbuilding, petroleum machinery, construction, valve and pumps, electric machine, hardware, power equipment
<b>MOQ</b>	1 TON
<b>Payment Terms</b>	T/T, L/C at sight
<b>Port</b>	Shanghai Port



## Company Advantages

We export the majority of our customized products to the United States and Europe, building long-term relationships with regular customers. Our extensive experience enables us to easily satisfy diverse customer requirements.

- Over 17 years of manufacturing experience in Aluminum Extrusion
- Strong design capabilities and fast processing speeds for extrusion, CNC machining, milling, and turning
- Complete metal processing capabilities including laser cutting, CNC bending, welding, and stamping
- Comprehensive quality control throughout the manufacturing process for long-term stability and excellent quality

## Technical Support Services

- Custom design services for extruded profiles including CAD drawings and 3D models
- Professional R&D team for design analysis and optimization to reduce costs and improve performance
- One-stop service model covering product design, mold customization, aluminum bar melting, extrusion profiling, precision machining, and surface treatment

## Manufacturing Capabilities

### Extrusion

Equipped with 44 aluminum extrusion lines capable of producing commercial and industrial aluminum profiles with maximum outer diameter of 350mm. Our largest 6800-ton extruder handles complex industrial profiles up to 600mm diameter.

### Anodizing

Six anodizing production lines create uniform oxidation films for improved corrosion resistance, hardness, and wear resistance. Available in silver, black, gold, champagne, and imitation steel colors with custom options available.



### Painting

Four powder spraying lines using high-quality Gema Switzerland spray nozzles with environmentally friendly, durable paints featuring strong adhesive force and color retention.

### CNC Machining

Advanced machining equipment operated by experienced technicians ensures precision and quality:

- 12 PRATIC machining centers for milling, drilling, and tapping profiles up to 6 meters
- Fully automatic Wegoma cutting machines for precise, efficient cutting
- 30 punching machines (50-100 ton capacity) for thick profiles over 5mm
- 10 stretch bending machines for precise arc and angle bending

10 milling machines for planes, bevels, and grooves

## Packing & Shipping

---

Finished products are manually packaged and prepared for delivery. Strict warehouse management procedures ensure organized storage with comprehensive transaction recording and pre-delivery examination.

## Quality Certifications

---

## Company History

---

- 2004: Recognized Brand of the Building Industry Material Market
- 2006: Certificate for Product Exemption from Quality Surveillance Inspection & ISO9001
- 2009: Advanced Company, Jiangsu Famous Brand Certificate, Credible Product of Quality in Jiangsu Province
- 2012: Established business relationships with Panasonic and LG
- 2015: Innovative producer and supplying partner for European clients
- 2017: Developed new baseboard heater products
- 2019: Cooperated with world's largest heater manufacturers as aluminum shell supplier
- 2023: Expanding overseas distributor network for win-win benefits

## Notable Projects

---

### Soccer City Stadium, Johannesburg

As the main aluminum supplier for Africa's largest stadium (94,000 seats), we contributed to this major South African construction project that received unanimous praise upon completion.

### Lobster Trailers

Collaboration with this Nordic trailer giant involved our R&D team analyzing and improving designs, then processing with excellent equipment and technology to minimize costs and enhance product performance.

### School Desk Project

Supplied aluminum legs for school desks through local customer Dadn, leveraging our strong design capabilities and mature technology to support successful project bidding.



---

 +86-13861643436  aluminum@hentec.com.cn  aluminumextrusion-profiles.com

Qinfeng Road No.555 Huashi Town Jiangyin Jiangsu China (mainland) 214421