



## Industrial Enclosure Housing Aluminum Lost Wax Sand Die Casting

### Basic Information

- Certification: ISO 9001:2000
- Minimum Order Quantity: 100
- Price: 1.99

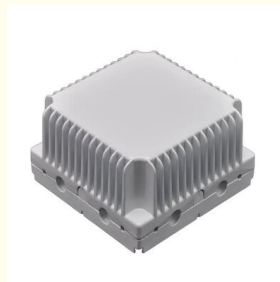


### Product Specification

- Material: Aluminum Alloy
- Surface Treatment: Anodizing
- Casting Tolerance: CT7-CT8
- Surface Roughness: Ra 12.5um
- Weight Range: 0.1-100kg
- Max Linear Size: 1200mm
- Max Diameter Size: 600mm
- Machining Precision: 0.008mm
- Repositioning Accuracy: 0.006mm
- Machining Roughness: Ra0.8~6.3um
- Max Spindle Travel: 1800mmx850mmx700mm
- Max Turning Diameter: 1000mm
- Casting Process: High Pressure Die Casting (HPDC), Vertical Low Pressure Die Casting (LPDC), Precision Sand Casting, Lost Foam Casting, Investment Casting



### More Images



## Product Description

### Industrial Enclosure Housing Aluminum Lost Wax Sand Die Casting

Metalplus specializes in aluminum industrial profile design and manufacturing with a production base of more than 100,000 square meters and annual capacity exceeding 100,000 tons.

### Product Capabilities

Aluminum Profile	Aluminum Fan Blade Profiles
Aluminum Profile System	Die Casting
Aluminum Extrusion Enclosure	Die Casting LED Housing
LED Aluminum Extrusion Profiles	Stainless Steel Casting
Aluminum Frame	Aluminum Casting
Customized Aluminum Profile	ACP (Aluminum Composite Panel)
Aluminum Heat Sink	
Electric Motor Housing Aluminum Profile	
Construction Aluminum Profile	
Aluminum Extrusion Tube	

### Product Description

Aluminum is the most frequently used material for aluminum castings to produce lightweight parts. The basic principle of low pressure casting involves filling aluminum molds with liquid aluminum alloy under low working pressure (0.06-0.15MPa) to obtain high-quality castings through controlled solidification.

Precision die casting parts are widely used in hardware components, automotive motor parts, machinery parts, medical equipment, and various industrial applications.

### Technical Specifications

<b>Material</b>	Aluminum Alloy, Carbon Steel, Alloy Steel, Stainless Steel
<b>Process</b>	Drawings → Mould Making → Die Casting → Rough Machining → CNC Machining → Surface Treatment → Product Checking → Packing → Delivery
<b>Casting Dimension Tolerance</b>	CT7-CT8
<b>Casting Surface Roughness</b>	Ra 12.5um
<b>Casting Weight Range</b>	0.1-100kg
<b>Casting Size</b>	Max linear size: 1200mm, Max diameter size: 600mm
<b>Machining Precision</b>	Positioning accuracy 0.008mm, Repeat positioning accuracy 0.006mm
<b>Machining Surface Roughness</b>	Ra0.8-6.3um
<b>Max Travel Of Spindle</b>	1800mm x 850mm x 700mm
<b>Max Turning Diameter</b>	1000mm

<b>Material Standard</b>	GB, ASTM, AISI, DIN, BS, JIS, NF, AS, AAR
<b>Surface Treatment</b>	Electroplating, Chrome Plating, Zinc Plating, Nickel plating, Electrophoresis, Anodization, Polishing, Powder coating, Sandblasting, Passivation, Spray painting
<b>Casting Process Type</b>	High Pressure Die Casting (HPDC), Vertical Low Pressure Die Casting (LPDC), Precision Sand Casting, Lost Foam Casting, Investment Casting, Metal Casting
<b>Service Available</b>	OEM & ODM
<b>Quality Control</b>	0 defects, 100% inspection before packing
<b>Application</b>	Train & railway, automobile & truck, construction machinery, forklift, agricultural machinery, shipbuilding, petroleum machinery, construction, valve and pumps, electric machine, hardware, power equipment
<b>MOQ</b>	1 TON
<b>Payment Terms</b>	T/T, L/C at sight
<b>Port</b>	Shanghai Port

## Our Advantages

We export the majority of our customized products to the United States and Europe, building long-term relationships with our customers. Our extensive experience enables us to efficiently meet customer requirements.

- Over 17 years of manufacturing experience in Aluminum Extrusion

- Strong design capabilities with fast extrusion, CNC machining, milling, and turning services

- Complete metal processing capabilities including stamping, laser cutting, CNC bending, and welding

- Comprehensive quality control throughout the manufacturing process for long-term stability and excellent quality

## Technical Support

- Custom design services for extruded profiles including CAD drawings and 3D models

- Professional R&D team for design analysis and optimization to reduce costs and improve performance

- One-stop service from product design to surface treatment with complete quality control

## Factory Equipment

### Extrusion

Equipped with 44 aluminum extrusion lines capable of producing commercial and industrial aluminum profiles with maximum outer diameter of 350mm. Our largest 6800-ton extruder handles industrial profiles up to 600mm diameter.

### Anodizing

6 anodizing production lines creating uniform oxidation films for improved corrosion resistance, hardness, and wear resistance. Available in silver, black, gold, champagne, and imitation steel colors with custom options.

### Painting

4 powder spraying lines using high-quality Gema Switzerland spray nozzles with environmentally friendly, durable paints featuring strong adhesion and color retention.

### CNC Machining

Advanced machining equipment including 12 PRATIC machining centers for profiles up to 6 meters, automatic cutting machines, 30 punching machines (50-100 tons), bending machines, and milling machines for comprehensive processing capabilities.

### Packing & Shipping

Manual packaging with strict warehouse management procedures, organized storage sections, comprehensive transaction recording, and pre-delivery inspection for quality assurance.

### Certifications

### Company History

- 2004: Recognized brand of the building industry material market
- 2006: Certificate for product exemption from quality surveillance inspection and ISO9001 certification
- 2009: Advanced company, Jiangsu famous brand certificate, credible product of quality in Jiangsu province
- 2012: Established business relationships with Panasonic and LG
- 2015: Innovative producer and supplying partner for European clients
- 2017: Developed new baseboard heater products
- 2019: Cooperated with world's largest heater manufacturers supplying aluminum shells
- 2023: Expanding overseas distributor network for market growth

### Notable Projects

#### Soccer City Stadium, Johannesburg

As the main aluminum supplier for Africa's largest capacity stadium (94,000 seats), we contributed to this major South African construction project that received unanimous praise upon completion.

#### Lobster Trailers

Collaboration with Nordic trailer giant featuring professional R&D team design analysis and optimization, processed with excellent equipment and technology to minimize production costs and enhance product performance.

#### School Desk Project

Supplied aluminum legs for school desks, supporting local customer Dadn in winning school project bids through strong design capabilities and mature manufacturing techniques.



+86-13861643436    aluminum@hentec.com.cn    aluminumextrusion-profiles.com

Qinfeng Road No.555 Huashi Town Jiangyin Jiangsu China (mainland) 214421