

6063 - T5 Industrial Aluminium Profile Electrophoretic Coated

Our Product Introduction

for more products please visit us on aluminumextrusion-profiles.com

Basic Information

- Place of Origin: China
- Brand Name: Hentec
- Certification: SGS
- Minimum Order Quantity: 1 ton
- Packaging Details: Ep paper ,kraft ,pallet
- Delivery Time: 20days
- Payment Terms: T/T ,L/C
- Supply Ability: 100 000ton each month



Product Specification

- Product Name: Industrial Aluminium Profile
- Alloy: 6063,6061,6005
- Material: Aluminum
- Surface Treatment: Mill Finished,Anodized ,Electrophoretic Coated,Powder Spray Coated
- Deep Process: Milling, Drilling, Bending,Cutting
- Temper: T4, T5, T6 ,T66
- Highlight: **aluminium door frame,
aluminium extruded profiles**

Product Description

6063-T5 Industrial Aluminum Profile , 2 Way Light Weight Aluminum Pallets Electrophoresis

Description:

We are Hentec Industry Co.,Ltd, which specializes in the manufacturing of various aluminum alloys series products in the forms of tubes, pipes, bars, etc. These products can be used for pallets, decorations, windows and doors, and transport tools, etc.

| | |
|------------------------|--|
| Item | 2-Way Light Weight Aluminum Pallets , With Finished Machining |
| Alloy | 6061,6060,6063,6005 etc |
| Temper | T4, T5, T6 |
| Surface | Oxidation coloring,Powder coating, Anodizing(clear, satin, bronze, black, golden, silver, other multicolor), Electrophoresis,PVDF coating, Mill finish, polished, color coated,Wire drawing,Wood grain,etc |
| Type | 2-way lightweight slatted pallet , interlocking 4-way block pallet , Fully Nestable 4-way entry with standard deck pallet , 2-way heavy duty channel pallet , fully nestable pallet ... |
| Technology Supports | 1, Engineering design 2, AutoCAD, pro/e ,UG drawing |
| Standard | Meet the China national standard and Europe standard and American standard. |
| Extrusion Tolerance | GB/T5237-2000 (Chinese Standard) |
| Machining Tolerance | GB/T 1804-92 |
| Standard for Anodizing | GB5237.2-2004 |
| Manufacturing Process | Die designing→ Die making→ Smelting& alloying→ Extruding→ Cutting→ CNC machining→ Drilling→ Tapping→ Surface treatment→ Welding→ Assembling→ Packing |
| Packing method | 1. Standard packing: Eachprofile will be wrapped in the EPE sheet in order to protect the profiles' surfaces, kraft paper wrapped in bundles. 2. Special packing: wooden cases+iron trays. 3. Bundles or boxes with wooden bars 4. EPE+carton boxes. 5. Customized packing methods are welcomed. 6.13 tons to a 20 feet container, 20 tons to a 40 feet container |

Applications:

Aluminum profile used in cars, trains machinery ,electronics, medical , solar panel frame and other industrial filed . In terms of hardware, machinery, electromechanical parts, solar PV products, aluminum frames are adopt as important auxiliary materials. We also have aluminum profiles for radiators, fitness machinery, buildings, lighting instrument, windpipes, oil pipelines, for instance.

Specifications:

1. Primary Technical Data

1) Chemical composition

| Alloy | Si | Fe | Cu | Mn | Mg | Cr | Zn | Ti | Impurity | Al |
|-------|---------|---------|----------|------|----------|-----------|------|------|----------|------|
| 6063 | 0.2-0.6 | 0.35 | 0.1 | 0.1 | 0.45-0.9 | 0.1 | 0.1 | 0.1 | 0.15 | Rest |
| 6061 | 0.4-0.8 | 0.7 | 0.15-0.4 | 0.15 | 0.8-1.2 | 0.04-0.35 | 0.25 | 0.15 | 0.15 | Rest |
| 6060 | 0.3-0.6 | 0.1-0.3 | 0.1 | 0.1 | 0.35-0.6 | - | 0.15 | 0.1 | 0.15 | Rest |
| 6005 | 0.6-0.9 | 0.35 | 0.1 | 0.1 | 0.40-0.6 | 0.1 | 0.1 | 0.1 | 0.15 | Rest |

2) Mechanical property

| Alloy | Temper | Tensile strength | Yield strength | Elongation |
|-------|--------|------------------|----------------|------------|
| 6063 | T5 | ≥ 160Mpa | ≥ 110Mpa | ≥ 8% |
| | T6 | ≥ 205Mpa | ≥ 180Mpa | ≥ 8% |
| 6061 | T6 | ≥ 265Mpa | ≥ 245Mpa | ≥ 8% |

3. Surface Treatment of Sections

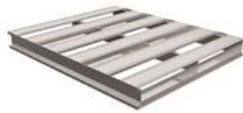
| (μm),not diminish than | | acid-resistant | | abrasion resistance |
|------------------------|-------|----------------|--|---------------------|
| | | CASS | | |
| (Min-average fil | (Min- | | | |

| (Class) | m thickness) | part film thickness) | (h) | Class | (S) | (f, g / μ m) |
|---------|-----------------|-------------------------|-----|----------|------------|------------------|
| AA10 | 10 | 8 | 16 | ≥ 9 | ≥ 50 | ≥ 300 |
| AA15 | 15 | 12 | 32 | ≥ 9 | ≥ 75 | ≥ 300 |
| AA20 | 20 | 16 | 56 | ≥ 9 | ≥ 100 | ≥ 300 |
| AA25 | 25 | 20 | 72 | ≥ 9 | ≥ 125 | ≥ 300 |

Competitive Advantage:

Our extrusion equipment is from 500 tons to 2500 tons can meet every kinds of usage like constructive, Industrial, family use.

For make sure our products quality every extrusion products have very strickly inspected system like All manages special commissioner to use the electronic bracket, the sclerometer test examination. This company still provided the sclerometer and the electric conduction reflectoscope reflector examines the request specially high aluminum.



2-Way Lightweight Slatted
Aluminum Pallet



Interlocking 4-Way Block
Aluminum Pallet



Fully Nestable 4-Way Entry
with Standard Deck



2-Way Heavy Duty Channel
Aluminum Pallet



Fully Nestable
Aluminum Pallet



4-Way Block Medium Duty
Aluminum Pallet



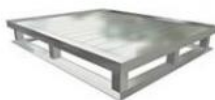
Standard 4-Way Block
Aluminum Pallet



2-Way Heavy Duty Rail
Aluminum Pallet



4-Way Big Block Open Bottom
Aluminum Pallet



4-Way Block Solid Extruded
Deck w/Lip Aluminum Pallet



4-Way Block Solid Deck
Aluminum Pallet



2-Way - 3 Runner - I Beam
Open Bottom Aluminum Pallet



4-Way - 3 Runner
MD Block Aluminum Pallet



4-Way Block with Extruded
Lip Aluminum Pallet



4-Way MD - 2 Runner
Block Aluminum Pallet



FAQ For Saving Your Precious Time!

Q1: What's the thickness for anodizing? Can you do 15um?

A: Our normal thickness is about 10 um. Yes, we can do 15um and above.

Q2: What color you can do for powder coating? The thickness for powder coat?

A: We can do any color for powder coat as long as you can provide the color sample. Our normally powder coating thickness is 60-80um.

Q3: What color you can do for wood grain?

A: Our most popular colors are Western Red Cedar, Australia Cedar, Jarrah I, Jarrah II, Chestnut, Bush Cherry, Bush Wood, Western Wood, Snow Gum, etc. If you need any other colors, we can do according to the color samples you provide.

Q4: How's the weather resistance for wood grain finish D1010?

A: (1). Powder: Akzo Noble Interpon D1010.

(2). Wood grain film: Italian Memphis.

(3). Standard complied: American AAMA Standard.2603

(4). UV test: 1000 hours.

(5). Salt spraying test: 1000 hours.

(6). Normal weather: 10 years color guarantee.

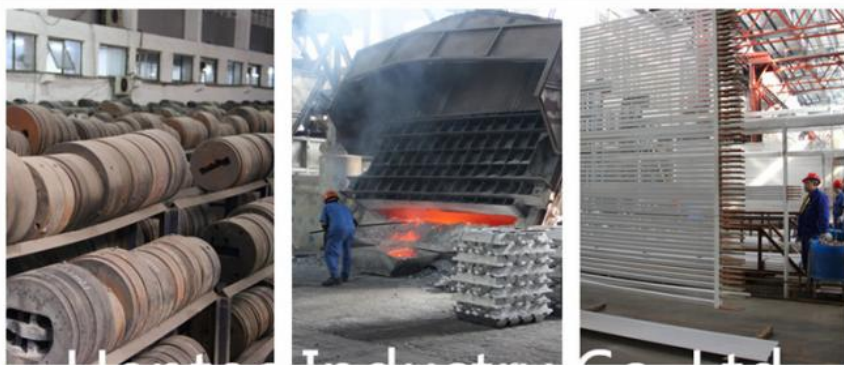
Q5: What certification do you have? What's your standard?

A: We have ISO certification. Our standard is DIN, AAMA, AS/NZS, China GB.

Q6: What's the delivery time for samples and mass production?

A: (1). 2-3 weeks to make the new moulds and make free samples.

(2). 3-4 weeks after receipt of deposit and confirmation of the order.



Hentec Industry Co., Ltd



HENTEC Hentec Industry Co.,Ltd

+86-13861643436 aluminum@hentec.com.cn aluminumextrusion-profiles.com

Qinfeng Road No.555 Huashi Town Jiangyin Jiangsu China (mainland) 214421