



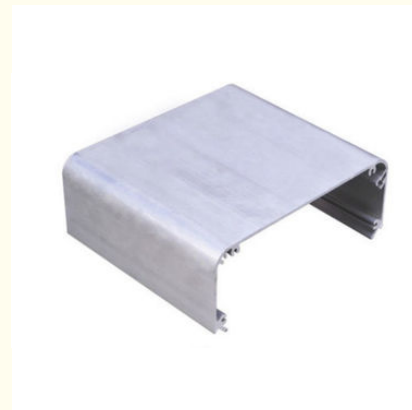
Mill Finish / Anodizing Extruded Aluminum Enclosure With Cutting / Drilling / Bending

Our Product Introduction

for more products please visit us on aluminumextrusion-profiles.com

Basic Information

- Place of Origin: China
- Brand Name: HENTEC
- Minimum Order Quantity: 1000kg
- Packaging Details: Be put in plastic pail of 50KG with inner plastic bags or soft container bags of 250-500KG or for request.



Product Specification

- Material: Aluminum
- Temper: 6063-T5
- Surface: Powder Painting
- Usage: Electrical Shell
- OEM/ODM: Acceptable
- Factory Location: WUXI China
- Highlight: **aluminum electrical enclosures, extruded aluminum housing**

Product Description

OutDoor Aluminum Electrical Shell , With Cutting , Drilling , Bending

Hentec Industry Co., Ltd. focus on producing and manufacturing aluminum profile, aluminum shell /cover , aluminium extrusion, aluminium tube , aluminum window door and curtain wall profiles and aluminum frame for LED lighting with the largest extruder as 5,000 tonnage. We produce more than 100,000 tons aluminum products annually

Description:

1. Material: 6063,6061,6060,6005,etc.
2. Temper: T5 or T6
3. Finish: Mill finish, anodizing, powder coating, electrophoresis, wooden transfer or pvdf/carbon-flouride coated, polishing, brushing, sand blasting
4. Various colors: Silver, bronze, black, gold, blue, grey, champagne, bright, etc.
5. Machining: Cutting, punching, drilling, tapping, milling, bending, welding, CNC etc.
6. Various in styles and sizes:
 - A) Aluminum alloy bars:6000 series , normal material such as 6063,6005,6061,6060, special materials such as 6082 etc.
 - B) Aluminum profiles:
 - General aluminum profiles (various shapes of pipes/tubes, angles, T or U shapes etc.)
 - Industrial aluminum profiles (Aluminum Electrical Shell , Heat sink profiles, Furniture, Ladder, Guide Rail, Leisure materials, Shower Room, Solar Module Frame, Motor Shell, Pipeline Integration etc.)
 - Construction aluminum profiles.
7. Certification: ISO9001,SGS,ROHS,TUV
8. Strong technical development ability, can provide high intensity and high ductility aluminum profiles, to meet customers' different requirements.
9. OEM service available, customized design available

Item	6061 Aluminum Extrusions For Electronics , Anodized / Powder Painted
Material	Alloy 6063, 6061,6060,6005,6082 or according to customer' s choice
Temper	T4, T5, T6 ,T66
Surface	Anodize (clear, satin, bronze, black, golden, silver, other multicolor) , electrophoresis, powder coating, PVDF coating, wood grain painting, etc.
MOQ	1 ton. Usually 12 tons for a 20 feet container; 24 tons for a 40 feet container.
Profile type	Industry Aluminum profile used in cars, trains machinery ,trailers ,electronics, medical and other industrial filed .
Processing	Aluminium profile extruding ,Precise cutting,Straight rectification,Bending,Drilling,Tapping,Stamping,Pulling,CNC mill, CNC lathe. For precious machining and cutting, length tolerance can be 0.2mm, hole tolerance can be 0.05mm .
Moulding	1. Using our moulds, free; 2. Using customer' s drawing, opening mould fee need to be paid .
Certificate	ISO14001:2004, ISO9001:2000
Standard	Meet the China national standard GB/T6892-2006 and Europe standard EN12020-1,2(2001) and American standard AAMA611-98.
FOB Port	Shanghai, etc.

Applications:

Industry Aluminum profile used in cars, trains machinery ,electronics, medical and other industrial filed . In terms of hardware, machinery, electromechanical parts, solar PV products, aluminum frames are adopt as important auxiliary materials. We also have aluminum profiles for radiators, fitness machinery, buildings, lighting instrument, windpipes, oil pipelines, for instance.

Specifications:

1. Primary Technical Data

1)Chemical composition

Alloy	Si	Fe	Cu	Mn	Mg	Cr	Zn	Ti	Impurity	Al
6063	0.2-0.6	0.35	0.1	0.1	0.45-0.9	0.1	0.1	0.1	0.15	Rest
6061	0.4-0.8	0.7	0.15-0.4	0.15	0.8-1.2	0.04-0.35	0.25	0.15	0.15	Rest
6060	0.3-0.6	0.1-0.3	0.1	0.1	0.35-0.6	-	0.15	0.1	0.15	Rest
6005	0.6-0.9	0.35	0.1	0.1	0.40-0.6	0.1	0.1	0.1	0.15	Rest

2) Mechanical property

Alloy	Temper	Tensile strength	Yield strength	Elongation
6063	T5	≥ 160Mpa	≥ 110Mpa	≥ 8%
	T6	≥ 205Mpa	≥ 180Mpa	≥ 8%

6061	T6	≥ 265Mpa	≥ 245Mpa	≥ 8%
------	----	----------	----------	------

2.Specifications:

Excellent material for smooth and subtle edges.
Elegant appearance.
Surface treatment: colorful anodized or electrostatic powder coated.
Suitable for constructions and other industrial purposes.
Customized surface finishes are welcome.

Competitive Advantage:

- 1) Engineering design and support.
- 2) Aluminum profiles deeply processing:cutting,punching,drilling,milling,and fabricating.
- 3) High Quality system, strictly inspection during production and whole inspection before package.
- 4) Good performance, product warranty for 15 years.



HENTEC Hentec Industry Co.,Ltd

☎ +86-13861643436 ✉ aluminum@hentec.com.cn 🌐 aluminumextrusion-profiles.com

Qinfeng Road No.555 Huashi Town Jiangyin Jiangsu China (mainland) 214421