



Professional Extruded Aluminum Enclosure Customized Aluminium Driver Housing

Our Product Introduction

for more products please visit us on aluminumextrusion-profiles.com

Basic Information

- Place of Origin: China
- Brand Name: Hentec
- Minimum Order Quantity: 50KG
- Packaging Details: In steel pails with inner double PVC bags containing 50KG per each



Product Specification

- Alloy: Aluminum
- Temper: T5 T6
- Surface: Anodized , Powder Painted
- Color: Customized
- Usage: Electrical
- Waterproof: Waterproof
- Highlight: **aluminum electrical enclosures, extruded aluminum housing**

Product Description

Customized Aluminum Electrical Shell / Customized Aluminium Driver Housing with Optional Sizes

Hentec Industrial Co.,Ltd is professional serves for Building doors and windows profiles, Railway, Cars with aluminum, IT computer , Communications, Electrical, Mechanical, High-speed rail transportation, Refrigerated containers etc., special aluminum profiles for 11 years.

	Product Specification
Item	Newest powder coating aluminium fire partition decorations for 6000 series aluminium alloy profile
Temper	T4 T5 T6 T66
Standard	GB/T3190-2008 Chinese Standard
Accessories	HOPO/SIEGENIA/Other brand pointed by customer with screen sheet
Shape	square, flat, round, hollow, oval, triangle, U-profile, L-profile, T-profile, H-profile, customized available
Use place	Door, Window, Balcony, Industry, Furniture ,and so on
Surface Treatment	Powder Coating: Normal Color, Special Color Fluorocarbon Coating: Normal Color, Special Color Anodizing: Silver, Champagne, Bronze, Black, K Gold, Gold, Imitating Steel, Titanium Wood Imitation: Normal Color, Special Color Polishing Electrophoresis and Wood Grain Treatment
Deep Processing Ability	Drilling, Bending, Welding, Aluminium Profile Fabrication, Precise Cutting ect.
Guarantee	Surface color can be stable for 10-20 years indoor using
FOB Port	Shanghai
MOQ	2 Ton Per Item
Packing	In general package: Shrink wrap, Plastic bag, Kraft paper, Paper wrap, Wooden pallet in extra charge etc.
Payment term	T/T, 30% Advanced deposit, the balance paid off before loading, or consulting
Delivery	15-20 days sample confirmed & down paymen

Order,payment,terms,shipment

- 1, Minimum order: 500kg per trial order 1 piece of sample free of charge provided by approval and kept for future mass production.
- 2, Sample Lead Time: 25 working days(15 days for making the tool and 10 days making the samples. Before sending the samples to customer, samples should pass strict test in our lab.)Production Lead time: it depends on customers' order quantity (30 working days after deposit).
- 3, Payment: (Can negotiate with customers, our usual practices are as follow)
- 4, Tooling:100% prepaid by T/T.
- 5, Parts:30% upon order confirmation and balance before delivery by T/T

Our advantage:

1. Profession production workshop for extrusion and colored profile manufacturing, including we own 4500 tons extrusion machine, automatic vertical electrophoresis production lines.
2. Strict quality control and inspection before good delivery.
3. Production standards: GB5237-2008 or other International standards
4. With 11 years' experience, our factory is well recognized by clients and enjoys a good reputation, among overseas markets.
5. Provincial-level R&D team and over 100 national patents.

Advantages of aluminum profile:

- .Slim profile
- .Durable
- .Narrow sight lines
- .Low maintenance

Applications:

Aluminum profile used in cars, trains machinery ,electronics, medical and other industrial filed . In terms of hardware, machinery, electromechanical parts, solar PV products, aluminum frames are adopt as important auxiliary materials. We also have aluminum profiles for radiators, fitness machinery, buildings, lighting instrument, windpipes, oil pipelines, for instance.

FAQ For Saving Your Precious Time!

Q1: What's the thickness for anodizing?Can you do 15um?

A: Our normal thickness is about 10 um.Yes, we can do 15um and above.

Q2: What color you can do for powder coating?The thickness for powder coat?

A: We can do any color for powder coat as long as you can provide the color sample.Our normally powder coating thickness is 60-80um.

Q3: What color you can do for wood grain?

A:Our most popular colors are Western Red Cedar, Australia Cedar, Jarrah I, Jarrah II, Chestnut, Bush Cherry, Bush Wood, Western Wood, Snow Gum, etc.If you need any other colors, we can do according to the color samples you provide.

Q4: How's the weather resistance for wood grain finish D1010?

A: (1). Powder:Akzo Noble Interpon D1010.

(2). Wood grain film:Italian Memphis.

(3). Standard complied:American AAMA Standard.2603

(4). UV test:1000 hours.

- (5). Salt spraying test:1000 hours.
(6). Normal weather:10 years color guarantee.

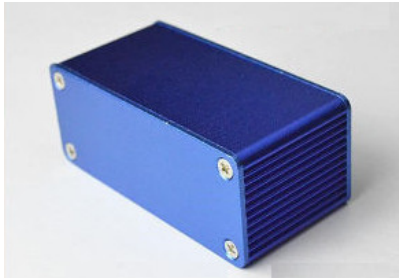
Q5: What certification do you have?What's your standard?

A:We have ISO certification.Our standard is DIN, AAMA, AS/NZS, China GB.

Q6: What's the delivery time for samples and mass production?

A: (1).2-3 weeks to make the new moulds and make free samples.

(2).3-4 weeks after receipt of deposit and confirmation of the order.



 **HENTEC** Hentec Industry Co.,Ltd

 +86-13861643436

 aluminum@hentec.com.cn

 aluminumextrusion-profiles.com

Qinfeng Road No.555 Huashi Town Jiangyin Jiangsu China (mainland) 214421