



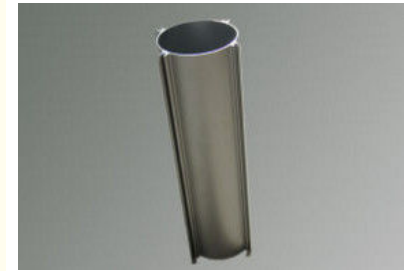
## OEM Extruded Hollow Tube Aluminium Enclosures For Electronics

Our Product Introduction

for more products please visit us on [aluminumextrusion-profiles.com](http://aluminumextrusion-profiles.com)

### Basic Information

- Place of Origin: China
- Brand Name: HT
- Minimum Order Quantity: 500KG
- Packaging Details: Carton / Wooden Case
- Delivery Time: 20 workdays



### Product Specification

- Material: Aluminum
- Alloy: 6063
- Temper: T5 / T6
- Surface: Powder Painting
- Warrnty: 15years
- Logo: Milling / Punching / Printing
- Highlight: extruded aluminum enclosure boxes,  
extruded aluminum housing

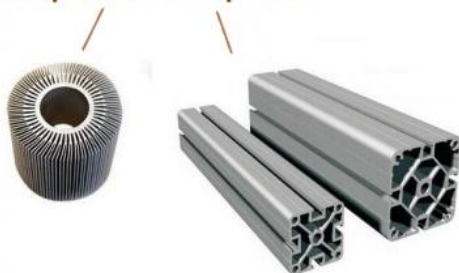


## Product Description

### OEM Aluminum Electrical Shell , Extruded Hollow Tube / Electrical Cover

- 1.High hardness, hard aluminum series.
- 2.Fair corrosion resistance. Heat treatable
- 3.Good workability and Good appearance
- 4.High quality and reasonable price.
- 5.china's leading manufacturer with above 15 years experience

Complex extrusion process



Zero-defect surface



Provide technical support to you

### Description:

#### Products Details

Aluminium Products Details	
Material	Alu alloy 6000 series, 6005 6060 6061 6063
Temper	T5 or T6
MOQ	1 ton for 6063, others to be 5-10 tons
Price Term	FOB, CIF, EXW etc
Port	Shanghai, China
Size	Can be customized
Shape	Round, oval, square or be designed.
Color	Black, golden, champagne, light green etc
Surface Treatment	Silver Anodized, powder coating, mill finished etc
Standard	GB/T5237-2000 & GB/T6892-2006, China standard
Certification	ISO9001-2008 & ISO14001-2004 & ROHS
Packing	Usually EP film inside, plastic film or carton outside
Delivery Time	Usually within 10-20 working days after receiving 30% advanced payment
Production Capacity	150 tons per day
Application	Widely used in construction, decoration, and varied industry fields
Deep Processing	Extrude, precious cut, punch, drill, mill, tap, rivet etc

#### Production Lines

Production Lines	Name	Qty	Max Product Length
Extruding Lines	600 ton extruder	5	
	800 ton extruder	2	
	1000 ton extruder	3	
	1250 ton extruder	3	
	1800 ton extruder	3	
	4500 ton extruder	2	
	Anodizing	2	≤6.5 m
	Powder coating	2	≤13 m

Surface Treatment Lines	Electrophoresis	1	≤6.5 m
	Wooden transfer	1	≤6.5 m
	Hot insulation cold bridge	1	≤6.5 m
Deep Processing Lines	Cutting machine	3	
	Punching machine	5	
	Milling machine	3	
	CNC machine	4	
	Polishing machine	1	
	Tapping machine	5	
	Riveting machine	1	

1.Material:Aluminum

2.Alloy :6063,6061,6005 ,6060 or according to customer's choice

3.Surface Treatment: Mill Finished,Anodized ,Electrophoretic coated,Powder spray coated,Fluorocarbon powder spray coated /PVDF Paint, Drawbench,Steel polished,Wood grain coated /Wooden transfer .

4.Deep process: Milling, Drilling, Bending,Cutting.

5.Application:

Industry Aluminum profile used in cars, trains machinery ,electronics, medical and other industrial filed . In terms of hardware, machinery, electromechanical parts, solar PV products, aluminum frames are adopt as important auxiliary materials. We also have aluminum profiles for radiators, fitness machinery, buildings, lighting instrument, windpipes, oil pipelines, for instance.

6.Color:clear, satin, bronze, black, golden, silver, other multicolor

7.Temper: T4, T5, T6 ,T66

### Applications:

Industry Aluminum profile used in cars, trains machinery ,electronics, medical and other industrial filed . In terms of hardware, machinery, electromechanical parts, solar PV products, aluminum frames are adopt as important auxiliary materials. We also have aluminum profiles for radiators, fitness machinery, buildings, lighting instrument, windpipes, oil pipelines, for instance.

### Specifications:

#### 1.Primary Technical Data

1)Chemical composition

Alloy	Si	Fe	Cu	Mn	Mg	Cr	Zn	Ti	Impurity	Al
6063	0.2-0.6	0.35	0.1	0.1	0.45-0.9	0.1	0.1	0.1	0.15	Rest
6061	0.4-0.8	0.7	0.15-0.4	0.15	0.8-1.2	0.04-0.35	0.25	0.15	0.15	Rest
6060	0.3-0.6	0.1-0.3	0.1	0.1	0.35-0.6	-	0.15	0.1	0.15	Rest
6005	0.6-0.9	0.35	0.1	0.1	0.40-0.6	0.1	0.1	0.1	0.15	Rest

2)Mechanical property

Alloy	Temper	Tensile strength	Yield strength	Elongation
6063	T5	≥ 160Mpa	≥ 110Mpa	≥ 8%
	T6	≥ 205Mpa	≥ 180Mpa	≥ 8%
6061	T6	≥ 265Mpa	≥ 245Mpa	≥ 8%

### Competitive Advantage:

1)Engineering design and support.

2)Aluminium profiles deeply processing:cutting,punching,drilling,milling,and fabricating.

3)High Quality system, strictly inspection during production and whole inspection before package.

4)Good performance, product warranty for 15 years.



**HENTEC** Hentec Industry Co.,Ltd

+86-13861643436

aluminum@hentec.com.cn

aluminumextrusion-profiles.com

Qinfeng Road No.555 Huashi Town Jiangyin Jiangsu China (mainland) 214421