

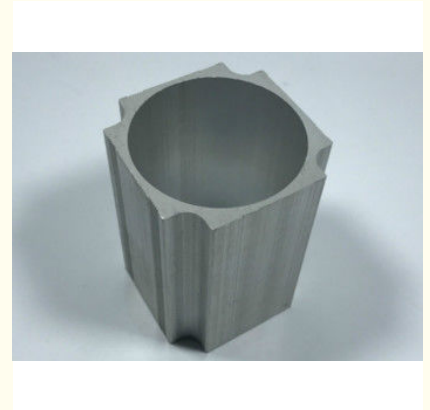


## Anodized Extruded Aluminum Enclosure OEM Extrusion Profile With Finished Machining

Our Product Introduction

### Basic Information

- Place of Origin: China
- Brand Name: ht
- Minimum Order Quantity: 500KG
- Packaging Details: wooden case
- Delivery Time: 20 work days



### Product Specification

- Material: Aluminum
- Temper: T5
- Alloy: 6063
- Color: Silvery
- Surface: Anodizing
- Logo: Printed
- Highlight: aluminum electrical enclosures,  
extruded aluminum enclosure boxes

for more products please visit us on [aluminumextrusion-profiles.com](http://aluminumextrusion-profiles.com)

## Product Description

### Anodized Aluminum Electrical Shell / OEM Extrusion Profile With Finished Machining

**Our 4500T grade extrusion machine enable us to produce any section within 400\*150mm and  $\phi$ 360. Your drawings are definitely welcomed.**

**Price indication: basic aluminium ingot, extrusion cost, surfacing cost and extra.**

**We also supply fully assembled premium grade window&door systems**

#### Product Specification

Item	High quality extruded industrial aluminium profiles
material	Aluminium 6000 series alloy: such as 6063 6005 6061
Temper	T4 T5 T6
Size	3m - 6m per piece ,or customized
Shape	round,square,flat,hollow,oval,triangle,U-profile,L-profile,T-profile,customized avaiable
Thickness	General profile thickness:0.8 - 5.0mm
Application	Construction

#### Surface treatment

Surface truemnt	Mill-finish,anodized,powder,coated,electropheresis,wood grain,brushed
Anodized Color	Silver,black,chanpagne,bronze,gold or customized
Anodized thickness	8 - 25um
Electrpheresis color	Silver,black,chanpagne,bronze,gold or customized
Powder coated Color	All color by Raul ,or customized
Powder coated thickness	40 - 120um
Wood grain	customized
Guarantee	surface color can be stable for 15- 20years indoor using

#### Packing

Bundles Packing	Inside: packed with plastic protective film to protect each piece Outside: wrap to be bundles by waterproof craft paper or EPE film
Carton packing	Inside: each pcs pack in one plastic bag; Outside: Numbers of quantity put in wooden case
Wood Pallet packing	Inside: Bundles or cartons packing Outside: Numbers of bundles or cartons laden on one wood pallet
Customized requirement	Customized packing requirement available

#### Other service details

MOQ	500kgs for each item ;Usually 13 - 15tons for a 20Gp ;24 - 25tons for a 40HQ
OEM service	Drawing , sample or design service offer by customer
Production Capacity	1000 - 1500 metric monthly
Deep process	CNC ,drilling ,milling ,cutting ,bending ,tapping ,welding ,assembling ,punching
Brand Name	Hentec , Kuntai
Certificatesand Standard	ISO9001 - 2008. ISO14001 . SGS
Delivery time	Die developing and sample testing :12 - 18days ; Mass production :20 - 30days after confirming sample by buyer
Payment Terms	T/T 30% for deposit ,balance before delivery
FOB port	Shanghai
Settlement Terms	charge by final actual weight or by drawing theoretical weight



### Applications:

Industry Aluminum profile used in cars, trains machinery ,electronics, medical and other industrial filed . In terms of hardware, machinery, electromechanical parts, solar PV products, aluminum frames are adopt as important auxiliary materials. We also have aluminum profiles for radiators, fitness machinery, buildings, lighting instrument, windpipes, oil pipelines, for instance.

### Specifications:

#### 1. Primary Technical Data

##### 1) Chemical composition

Alloy	Si	Fe	Cu	Mn	Mg	Cr	Zn	Ti	Impurity	Al
6063	0.2-0.6	0.35	0.1	0.1	0.45-0.9	0.1	0.1	0.1	0.15	Rest
6061	0.4-0.8	0.7	0.15-0.4	0.15	0.8-1.2	0.04-0.35	0.25	0.15	0.15	Rest
6060	0.3-0.6	0.1-0.3	0.1	0.1	0.35-0.6	-	0.15	0.1	0.15	Rest
6005	0.6-0.9	0.35	0.1	0.1	0.40-0.6	0.1	0.1	0.1	0.15	Rest

##### 2) Mechanical property

Alloy	Temper	Tensile strength	Yield strength	Elongation
6063	T5	≥ 160Mpa	≥ 110Mpa	≥ 8%
	T6	≥ 205Mpa	≥ 180Mpa	≥ 8%
6061	T6	≥ 265Mpa	≥ 245Mpa	≥ 8%

### Competitive Advantage:

#### Our advantage:

1. Profession production workshop for extrusion and colored profile manufacturing, including we own 4000 tons extrusion machine, automatic vertical electrophoresis production lines.
2. Strict quality control and inspection before good delivery.
3. Production standards: GB5237-2008 or other International standards
4. With 25 years' experience, our factory is well recognized by clients and enjoys a good reputation, among overseas markets.
5. Provincial-level R&D team and over 100 national patents.



**HENTEC** Hentec Industry Co.,Ltd

☎ +86-13861643436    ✉ aluminum@hentec.com.cn    🌐 aluminumextrusion-profiles.com

Qinfeng Road No.555 Huashi Town Jiangyin Jiangsu China (mainland) 214421