



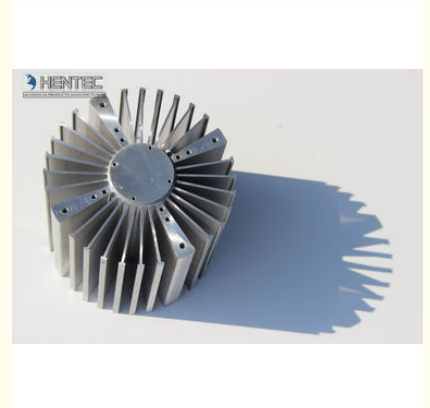
## 6060 6061 Extruded Aluminum Heatsink Extrusion Profile For Led Light ROHS / SGS

### Our Product Introduction

for more products please visit us on [aluminumextrusion-profiles.com](http://aluminumextrusion-profiles.com)

#### Basic Information

- Place of Origin: China
- Brand Name: HT
- Certification: CA ,CE
- Model Number: KTH-007
- Minimum Order Quantity: 1 ton
- Packaging Details: Ep paper ,kraft ,pallet
- Delivery Time: 20days
- Payment Terms: T/T ,L/C
- Supply Ability: 100 000ton each month



#### Product Specification

- Product Name: Aluminum Heatsink Extrusion Profiles
- Alloy: 6063,6061,6005
- Material: Aluminum
- Surface Treatment: Mill Finished,Anodized ,Electrophoretic Coated,Powder Spray Coated
- Deep Process: Milling, Drilling, Bending,Cutting
- Temper: T4, T5, T6 ,T66
- Highlight: **heatsink extrusion profiles, aluminium heatsink extrusion**

## Product Description

### Description:

Hentec Industry is dedicated to the development, manufacture and marketing of high-performance aluminum extrusion profiles. We pride ourselves on rapid sampling, flexible production methodologies and world-class technical support to our customers. We have significant experience in the thermal management arena and look forward to working with our customers, wherever they are in the world, and however demanding their needs are. And now, our products have been sold in more than 1000 global customers.

Material	Aluminum alloy
Surface Treatment	Polishing, Powder coating, Spraying, Anodising, Zinc Plating and etc
Tolerance	+/-0.02~0.05mm
Equipments	a) CNC Machining Center b) Extrusion Machine c) CNC Milling Machines d) Punching Machines e) Precision Cutting Machines f) Argon Welding Machines g) NC Bending Machine h) Anodized /Powder painted line
Preferred Formats	JPEG, PDF,CAD,IGS,STP
Preferred Industries	a) Communication Equipments b) Medical Equipments c) House Hardware d) Toy Air soft e) Mechanical Equipments f) Other customized Parts

### Applications:

Aluminum heat sink is widely used on Machines , cars , lighter ...

### Specifications:

#### 1. Primary Technical Data

##### 1) Chemical composition

Alloy	Si	Fe	Cu	Mn	Mg	Cr	Zn	Ti	Impurity	Al
6063	0.2-0.6	0.35	0.1	0.1	0.45-0.9	0.1	0.1	0.1	0.15	Rest
6061	0.4-0.8	0.7	0.15-0.4	0.15	0.8-1.2	0.04-0.35	0.25	0.15	0.15	Rest
6060	0.3-0.6	0.1-0.3	0.1	0.1	0.35-0.6	-	0.15	0.1	0.15	Rest
6005	0.6-0.9	0.35	0.1	0.1	0.40-0.6	0.1	0.1	0.1	0.15	Rest

##### 2) Mechanical property

Alloy	Temper	Tensile strength	Yield strength	Elongation
6063	T5	≥ 160Mpa	≥ 110Mpa	≥ 8%
	T6	≥ 205Mpa	≥ 180Mpa	≥ 8%
6061	T6	≥ 265Mpa	≥ 245Mpa	≥ 8%



Hentec Industry Co.,Ltd

**Competitive Advantage:**


We can offer professional Manufacturing and exporting service, OEM/ODM for Metal & Plastic parts in China. All the parts manufactured by CNC Lathe & Milling Machine Center.




Tag :  
**LED Aluminum Heat Sink**  
,  
**extruded aluminum heat sink**

 **HENTEC** Hentec Industry Co.,Ltd

 +86-13861643436

 [aluminum@hentec.com.cn](mailto:aluminum@hentec.com.cn)

 [aluminumextrusion-profiles.com](http://aluminumextrusion-profiles.com)

Qinfeng Road No.555 Huashi Town Jiangyin Jiangsu China (mainland) 214421