



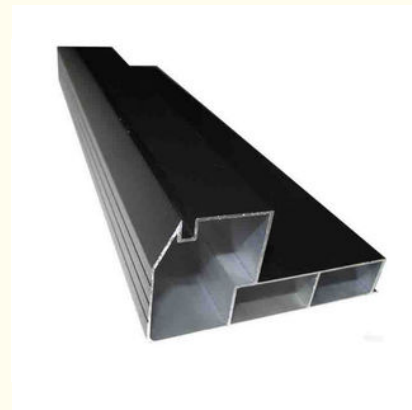
## Anodized Aluminum Window Extrusion Profiles / Aluminium Alloy Horizontal Sliding Sash Glass Window

Our Product Introduction

for more products please visit us on [aluminumextrusion-profiles.com](http://aluminumextrusion-profiles.com)

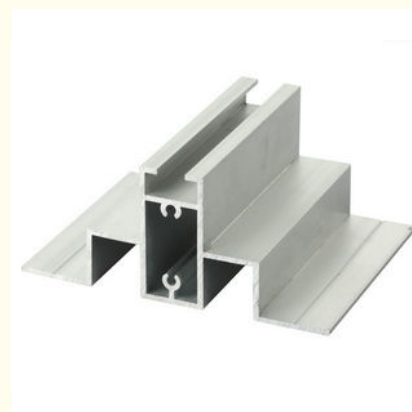
### Basic Information

- Place of Origin: China
- Brand Name: HT
- Certification: CA ,CE
- Minimum Order Quantity: 1 ton
- Packaging Details: EP Paper ,kraft and pallet
- Delivery Time: 20days
- Payment Terms: T/T or L/C
- Supply Ability: 100 000 ton each month



### Product Specification

- Material: Aluminum Alloy
- Temper: T5 / T6
- Alloy: 6063 / 6061 / 6060
- Surface: Powder Painted
- Color: Customized
- Highlight: **aluminum extrusion profiles, extruded aluminium profiles**



### More Images



## Product Description

### Description:

#### Anodized Aluminum Window Extrusion Profiles / Aluminium Alloy Horizontal Sliding Sash Glass Window

**Material** :6063

**Surface** : Mill Finished, Powder Coating ,Chemical and Mechanical Polishing, Sand Blasting , Satin, Bronze, Black, Golden, Silver, Anodizing, Electrophoresis

**MOQ** :10 sets .

**Packing** : EPE, wrapped with waterproof paper ,pallet ,wooden case .

**Sample delivery time** : Two weeks

### Color Chart for Sliding Window:

More color for window, you also can provide your color.

#### Color



RAL



COLORBOND

#### Specification

### Applications:

Aluminum profile used for making aluminum door . There are many colors can be selected for surface treatment . The strength can be increased by higher wall thickness . It is possible to produce according to customized design .



## Specifications:

### 1. Primary Technical Data

#### 1) Chemical composition

Alloy	Si	Fe	Cu	Mn	Mg	Cr	Zn	Ti	Impurity	Al
6063	0.2-0.6	0.35	0.1	0.1	0.45-0.9	0.1	0.1	0.1	0.15	Rest
6061	0.4-0.8	0.7	0.15-0.4	0.15	0.8-1.2	0.04-0.35	0.25	0.15	0.15	Rest
6060	0.3-0.6	0.1-0.3	0.1	0.1	0.35-0.6	-	0.15	0.1	0.15	Rest
6005	0.6-0.9	0.35	0.1	0.1	0.40-0.6	0.1	0.1	0.1	0.15	Rest

#### 2) Mechanical property

Alloy	Temper	Tensile strength	Yield strength	Elongation
6063	T5	≥ 160Mpa	≥ 110Mpa	≥ 8%
	T6	≥ 205Mpa	≥ 180Mpa	≥ 8%
6061	T6	≥ 265Mpa	≥ 245Mpa	≥ 8%


## Competitive Advantage:

1. Top Aluminium profile manufacturer for more than 10 years in China.
2. Diverse Products used in the fields of construction, industry and deep-processing.
3. Quality Control is put in the core position of our production.
4. Customized Production shows our capability in product design and process control.
5. Perfect Customer Services include careful packaging, quick delivery and good after-sale service.



Tag :  
**aluminium window extrusion profiles**  
,  
**powder coating aluminium window frames**

 **HENTEC** Hentec Industry Co.,Ltd

 +86-13861643436

 [aluminum@hentec.com.cn](mailto:aluminum@hentec.com.cn)

 [aluminumextrusion-profiles.com](http://aluminumextrusion-profiles.com)

Qinfeng Road No.555 Huashi Town Jiangyin Jiangsu China (mainland) 214421