



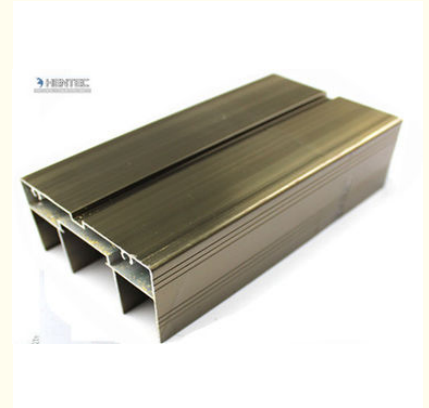
## 2.0 MM Thick Champagne Anodized Aluminum Door Extrusions For Sliding Door / Casement Door

Our Product Introduction

for more products please visit us on [aluminumextrusion-profiles.com](http://aluminumextrusion-profiles.com)

### Basic Information

- Place of Origin: China
- Brand Name: HT
- Certification: CA ,CE
- Minimum Order Quantity: 1 ton
- Packaging Details: Ep paper ,kraft and pallet
- Delivery Time: 20days
- Payment Terms: T/T or L/C
- Supply Ability: 100 000ton each month



### Product Specification

- Deep Process: Drilling
- Alloy: 6061
- Material: Aluminum
- Anodized: Champagne
- Standard: GB/75237-2004
- Temper: T6
- Highlight: extruded aluminium profiles,  
aluminum door frames



### More Images



## Product Description

### Hot Sale Excellent Aluminum Door Extrusions / 2.0 MM Aluminum Sliding Door / Casement Door

#### Feature of Aluminum Door

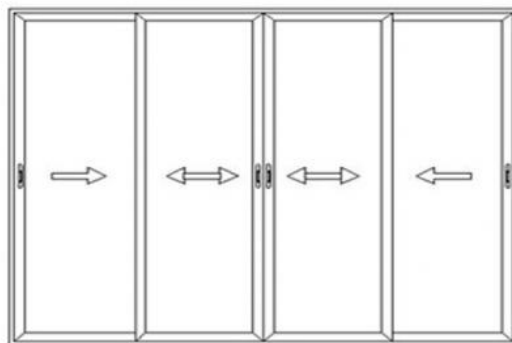
1. Heat insulation, soundproof, anti-Theft, decoration, good sealing performance, space and energy saving, easy to install and clean, economical and easy to maintenance, high decay resistance, high strength
2. The upglide adopts relief step structure, and the glide adopts cant stair structure, easy to open and close, flexibly and freely.
3. Apply to luxury villa, hotel, residence, large store, project and various kinds of large spaces.

#### Order, payment, terms, shipment

- 1, Minimum order: 500kg per trial order 1 piece of sample free of charge provided by approval and kept for future mass production.
- 2, Sample Lead Time: 25 working days (15 days for making the tool and 10 days making the samples. Before sending the samples to customer, samples should pass strict test in our lab. ) Production Lead time: it depends on customers' order quantity ( 30 working days after deposit).
- 3, Payment: (Can negotiate )



Opening Style



Color: can be customized



**Applications:**

Aluminum profile used for making aluminum door .There are many colors can be selected for surface treatment .The strength can be increased by higher wall thickness . It is possible to produce according to customized design .

**Specifications:**

1. Primary Technical Data

1) Chemical composition

Alloy	Si	Fe	Cu	Mn	Mg	Cr	Zn	Ti	Impurity	Al
6063	0.2-0.6	0.35	0.1	0.1	0.45-0.9	0.1	0.1	0.1	0.15	Rest
6061	0.4-0.8	0.7	0.15-0.4	0.15	0.8-1.2	0.04-0.35	0.25	0.15	0.15	Rest
6060	0.3-0.6	0.1-0.3	0.1	0.1	0.35-0.6	-	0.15	0.1	0.15	Rest
6005	0.6-0.9	0.35	0.1	0.1	0.40-0.6	0.1	0.1	0.1	0.15	Rest

2) Mechanical property

Alloy	Temper	Tensile strength	Yield strength	Elongation
6063	T5	≥ 160Mpa	≥ 110Mpa	≥ 8%
	T6	≥ 205Mpa	≥ 180Mpa	≥ 8%
6061	T6	≥ 265Mpa	≥ 245Mpa	≥ 8%



Tag :  
**aluminium extrusions profiles**  
**aluminum extrusions shapes**

**HENTEC** Hentec Industry Co.,Ltd

+86-13861643436    aluminum@hentec.com.cn    aluminumextrusion-profiles.com

Qinfeng Road No.555 Huashi Town Jiangyin Jiangsu China (mainland) 214421