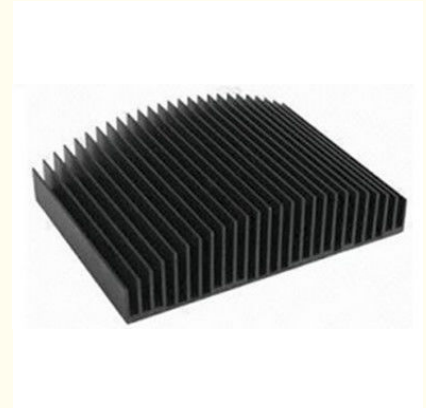


## 6063 Extruded Aluminum Heatsink Profiles Use On LED Lamps , Computer , Electrical And Electronics Instruments

Our Product Introduction

### Basic Information

- Place of Origin: China
- Brand Name: HT
- Certification: CA ,CE
- Minimum Order Quantity: 1 ton
- Packaging Details: Ep paper ,kraft ,pallet
- Delivery Time: 20days
- Payment Terms: T/T ,L/C
- Supply Ability: 100 000ton each month



### Product Specification

- Product Name: Aluminum Heatsink Extrusion Profiles
- Alloy: 6063,6061,6005
- Material: Aluminum
- Surface Treatment: Mill Finished,Anodized ,Electrophoretic Coated,Powder Spray Coated
- Deep Process: Milling, Drilling, Bending,Cutting
- Temper: T4, T5, T6 ,T66
- Highlight: **heatsink extrusion profiles, aluminium heatsink extrusion**

for more products please visit us on [aluminumextrusion-profiles.com](http://aluminumextrusion-profiles.com)

## Product Description

### Description:

The heat sinks are use on LED lamps,computer, electrical and electronics instruments.We can make moulds and arrange production according customers' requests .

|                         |  |
|-------------------------|--|
| Item                    | 6063 Extruded Aluminum Heatsink Profiles Use On LED Lamps , Computer , Electrical And Electronics Instruments  |
| Alloy                   | 6061,6060,6063,6005 etc  |
| Temper                  | T4, T5, T6,T66   |
| Finishing               | Mill finished, Anodized, Electrophoresis, Powder coated, Painted, Sliver matt, Sand blasted, PVDF, Silkscreened etc.   |
| Shape                   | Round, Square, Triangle, Rectangle etc...and Customized shapes are welcomed.   |
| Technology Supports     | 1,Engineering design<br>2,AutoCAD, pro/e ,UG drawing   |
| Standard for Extrusion  | GB /T5237-2008 .EN-755-2/3/6/8, BS-1474, BS 1161 (British Standards),JIS H4100 (Japanese Standard),AS/NZS1866-1997 (Australian New Zealand Standard)   |
| Machining & Fabrication | Cutting, Shearing, Deburring, Tumbling, Punching, Drilling, Tapping, Chamfering, Cold-drawing, Honing, Bending, Stamping, Forming, Polishing, Grinding, Brushing, Sandblasting, Welding Numerical Control Lathing, Milling, Sophisticated CNC Precision Machining  |
| Packing method          | 1. Standard packing: Eachprofile will be wrapped in the EPE sheet in order to protect the profiles' surfaces, kraft paper wrapped in bundles.<br>2. Special packing: wooden cases<br>3. pallet<br>4. EPE+carton box+pallet or wooden case<br>5. Customized packing methods are welcomed.<br>6.13 tons to a 20 feet container, 20 tons to a 40 feet container |

### Order,payment,terms,shipment

- 1, Minimum order: 500 kg per trial order 1 piece of sample free of charge provided by approval and kept for future mass production.
- 2, Sample Lead Time: 25 working days(15 days for making the tool and 10 days making the samples. Before sending the samples to customer, samples should pass strict test in our lab. )Production Lead time: it depends on customers' order quantity ( 30 working days after deposit).
- 3, Payment :30% T/T in advance the balance after the copy of BOL .

### Applications:

Aluminum heat sink is widely used on Machines , cars , lighter ...

### Specifications:

#### 1. Primary Technical Data

##### 1)Chemical composition

| Alloy | Si      | Fe      | Cu       | Mn   | Mg       | Cr        | Zn   | Ti   | Impurity | Al   |
|-------|---------|---------|----------|------|----------|-----------|------|------|----------|------|
| 6063  | 0.2-0.6 | 0.35    | 0.1      | 0.1  | 0.45-0.9 | 0.1       | 0.1  | 0.1  | 0.15     | Rest |
| 6061  | 0.4-0.8 | 0.7     | 0.15-0.4 | 0.15 | 0.8-1.2  | 0.04-0.35 | 0.25 | 0.15 | 0.15     | Rest |
| 6060  | 0.3-0.6 | 0.1-0.3 | 0.1      | 0.1  | 0.35-0.6 | -         | 0.15 | 0.1  | 0.15     | Rest |
| 6005  | 0.6-0.9 | 0.35    | 0.1      | 0.1  | 0.40-0.6 | 0.1       | 0.1  | 0.1  | 0.15     | Rest |

##### 2) Mechanical property

| Alloy | Temper | Tensile strength | Yield strength | Elongation |
|-------|--------|------------------|----------------|------------|
| 6063  | T5     | ≥ 160Mpa         | ≥ 110Mpa       | ≥ 8%       |
|       | T6     | ≥ 205Mpa         | ≥ 180Mpa       | ≥ 8%       |
| 6061  | T6     | ≥ 265Mpa         | ≥ 245Mpa       | ≥ 8%       |

### Competitive Advantage:

- 1, This aluminum extraction profile for heat sink offers excellent engineering design and technical support .
- 2, With the deep processing ,it will be cut ,punched ,drilled ,milled and then fabricated into the finished product .
- 3, It is guaranteed on the excellent performance for as long as 15 years .

### Tag :

**extruded aluminum heat sink**

**aluminum heatsink extrusion profiles**



+86-13861643436



aluminum@hentec.com.cn



aluminumextrusion-profiles.com

Qinfeng Road No.555 Huashi Town Jiangyin Jiangsu China (mainland) 214421