



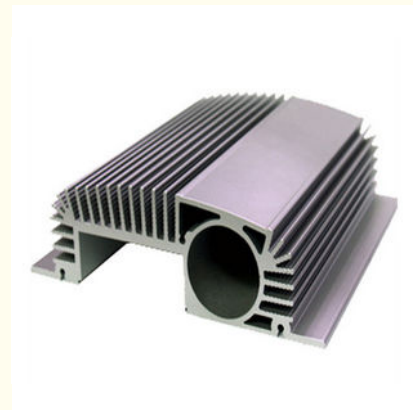
## Electrical Cover with Black Coating / Industrial Aluminum Profile / Electrical Shell

Our Product Introduction

for more products please visit us on [aluminumextrusion-profiles.com](http://aluminumextrusion-profiles.com)

### Basic Information

- Place of Origin: China
- Brand Name: Hentec
- Certification: SGS
- Minimum Order Quantity: 1 ton
- Packaging Details: Ep paper ,kraft ,pallet
- Delivery Time: 20days
- Payment Terms: T/T ,L/C
- Supply Ability: 100 000ton each month



### Product Specification

- Product Name: Industrial Aluminium Profile
- Alloy: 6063,6061,6005
- Material: Aluminum
- Surface Treatment: Mill Finished,Anodized ,Electrophoretic Coated,Powder Spray Coated
- Deep Process: Milling, Drilling, Bending,Cutting
- Temper: T4, T5, T6 ,T66
- Highlight: **aluminum extrusion profiles,**  
**aluminium door frame**

## Product Description

### Electrical Cover with Black Coating / Industrial Aluminum Profile / Electrical Shell

#### Advantages:

1. Professional research and design team (25 persons), all necessary equipment.
2. Strict quality control in each process and finish product quality control.
3. Short delivery lead time: 15-30 days after sample be approved
4. Comprehensive after-sale service, quick responses for daily communication

#### Complex extrusion process



#### Zero-defect surface



#### Provide technical support to you

#### Description:

Item	Aluminum extruded cylinder shell with CNC machining
Material	Alloy 6063, 6061 ,6005,6060 or according to customer' s choice
Temper	T4, T5, T6,T66
Surface	Anodize (clear, satin, bronze, black, golden, silver, other multicolor) , electrophoresis, powder coating, PVDF coating, wood grain painting, etc.
MOQ	1 ton. Usually 12 tons for a 20 feet container; 24 tons for a 40 feet container.
Usage	Widely used in the instruction and electronic areas
Machining	High-precision machining available upon request (lathe/milling/CNC machining/polishing/punching/drilling/taping, etc.)
Moulding	1. Using our moulds, free; 2. Using customer' s drawing, opening mould fee need to be paid .
Certificate	ISO14001:2004, ISO9001:2000
FOB Port	Shanghai, etc.

1.Material:Aluminum

2.Alloy :6063,6061,6005 ,6060 or according to customer's choice

3.Surface Treatment: Mill Finished,Anodized ,Electrophoretic coated,Powder spray coated,Fluorocarbon powder spray coated /PVDF Paint, Drawbench,Steel polished,Wood grain coated /Wooden transfer .

4.Deep process: Milling, Drilling, Bending,Cutting.

5.Application:

Industry Aluminum profile used in cars, trains machinery ,electronics, medical and other industrial filed . In terms of hardware, machinery, electromechanical parts, solar PV products, aluminum frames are adopt as important auxiliary materials. We also have aluminum profiles for radiators, fitness machinery, buildings, lighting instrument, windpipes, oil pipelines, for instance.

6.Color:clear, satin, bronze, black, golden, silver, other multicolor

7.Temper: T4, T5, T6 ,T66

#### Applications:

Industry Aluminum profile used in cars, trains machinery ,electronics, medical and other industrial filed . In terms of hardware, machinery, electromechanical parts, solar PV products, aluminum frames are adopt as important auxiliary materials. We also have aluminum profiles for radiators, fitness machinery, buildings, lighting instrument, windpipes, oil pipelines, for instance.

## Specifications:

### 1.Primary Technical Data

#### 1)Chemical composition

Alloy	Si	Fe	Cu	Mn	Mg	Cr	Zn	Ti	Impurity	Al
6063	0.2-0.6	0.35	0.1	0.1	0.45-0.9	0.1	0.1	0.1	0.15	Rest
6061	0.4-0.8	0.7	0.15-0.4	0.15	0.8-1.2	0.04-0.35	0.25	0.15	0.15	Rest
6060	0.3-0.6	0.1-0.3	0.1	0.1	0.35-0.6	-	0.15	0.1	0.15	Rest
6005	0.6-0.9	0.35	0.1	0.1	0.40-0.6	0.1	0.1	0.1	0.15	Rest

#### 2)Mechanical property

Alloy	Temper	Tensile strength	Yield strength	Elongation
6063	T5	≥ 160Mpa	≥ 110Mpa	≥ 8%
	T6	≥ 205Mpa	≥ 180Mpa	≥ 8%
6061	T6	≥ 265Mpa	≥ 245Mpa	≥ 8%

## Competitive Advantage:

- 1)Engineering design and support.
- 2)Aluminium profiles deeply processing:cutting,punching,drilling,milling,and fabricating.
- 3)High Quality system, strictly inspection during production and whole inspection before package.
- 4)Good performance, product warranty for 15 years.

