



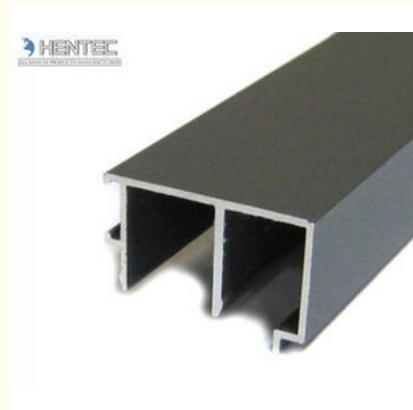
## Mill Finished / Anodized Aluminum Extrusion Profiles For Side Hung Doors

Our Product Introduction

for more products please visit us on [aluminumextrusion-profiles.com](http://aluminumextrusion-profiles.com)

### Basic Information

- Place of Origin: China
- Brand Name: HT
- Certification: CA ,CE
- Minimum Order Quantity: 1 ton
- Packaging Details: Ep paper ,kraft and pallet
- Delivery Time: 20days
- Payment Terms: T/T or L/C
- Supply Ability: 100 000ton each month

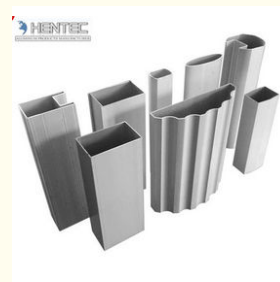
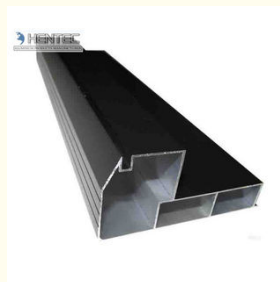
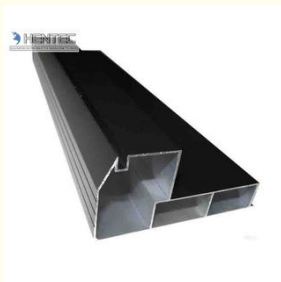


### Product Specification

- Product Name: Aluminum Door Extrusions
- Alloy: 6063,6061,6005
- Material: Aluminum
- Surface Treatment: Mill Finished,Anodized, etc
- Temper: T4, T5, T6 ,T66
- Application: Buildings,commercial,industrial
- Highlight: **extruded aluminium profiles, aluminum extrusion profiles**



### More Images



## Product Description

### Chinese Manufactory Aluminum Door Extrusions For Side Hung Doors

Standard: GB/75237-2004, Q/320281/PDWD-2008

Certification: ISO9001

OEM service offered

Material: Alloy 6063, 6061 or according to customer' s choice

Temper: T4, T5, T6,T66

### Description:

### Technical requirements

- 1) Standard: GB/75237-2004, Q/320281/PDWD-2008
- 2) Certification: ISO9001
- 3) OEM service offered
- 4) Material: Alloy 6063, 6061 or according to customer' s choice  
Temper: T3, T4, T5, T6
- 5) Fabrication : 1. Milling; 2. Drilling; 3. Bending; 4. Cutting...
- 6) Window Accessories: Using ECO friendly EPDM leather strap that would not age for a long time with a long service life.
- 7) MOQ : 1 ton. Usually 12 tons for a 20 feet container; 24 tons for a 40 feet container.
- 8) FOB Port: Shanghai Port

- 1.Alloy :6063,6061,6005 or according to customer' s choice
- 2.Material:Aluminum
- 3.Surface Treatment: Mill Finished,Anodized ,Electrophoretic coated,Powder spray coated,Fluorocarbon powder spray coated /PVDF Paint, Drawbench,Steel polished,Wood grain coated /Wooden transfer .
- 4.Deep process: Milling, Drilling, Bending,Cutting.
- 5.Application:  
Used in casement doors and windows for living room, dinner room, bathroom, office room, meeting room, restaurant, hotel, etc.
- 6.Color:clear, satin, bronze, black, golden, silver, other multicolor
- 7.Temper: T4, T5, T6 ,T66

Surface treatment	
Power Coating Profile	As an environment-friendly high quality solvent-free decoration material,our power coated aluminium profile is characterized by excellent corrosion resistance,superior mechanical properties,impact resistance and fine flexibility,uncomparable by ordinary aluminum products,resistant to ultraviolet light,free from fading and influence from harsh weather,and lasting color and gloss
Wood Grain Profile	As a leading environment-friendly domestic building aluminium product,the wood-grain aluminium product contributes to modern home decoration.With all the advantages of centralized coated aluminium products,it has wood-like visual effects.It outweighs the wood products in terms of fireproof and thermal insulation and corrosion resistance.
Thermal-Break Profile	With sealed thermal and cold insulation performance,the thermal break aluminium product can significantly reduce energy consumption,in compliance with the requirements of the national energy-saving decree .It also has good characteristics to resist the erosion caused by harmful.
PVDF Profile	Our fluorocarbon coated aluminium profile is characterized by the smooth surface,uniform color,strongly resistant from high acid,alkali,impact and abrasion.It can withstand long-term strong ultraviolet radiation and acid erosion,free from coating chalking,fading and shedding.



### Applications:

Aluminum Door Extrusions Used in casement doors and windows for living room, dinner room, bathroom, office room, meeting room, restaurant, hotel, etc.

## Specifications:

### 1.Primary Technical Data

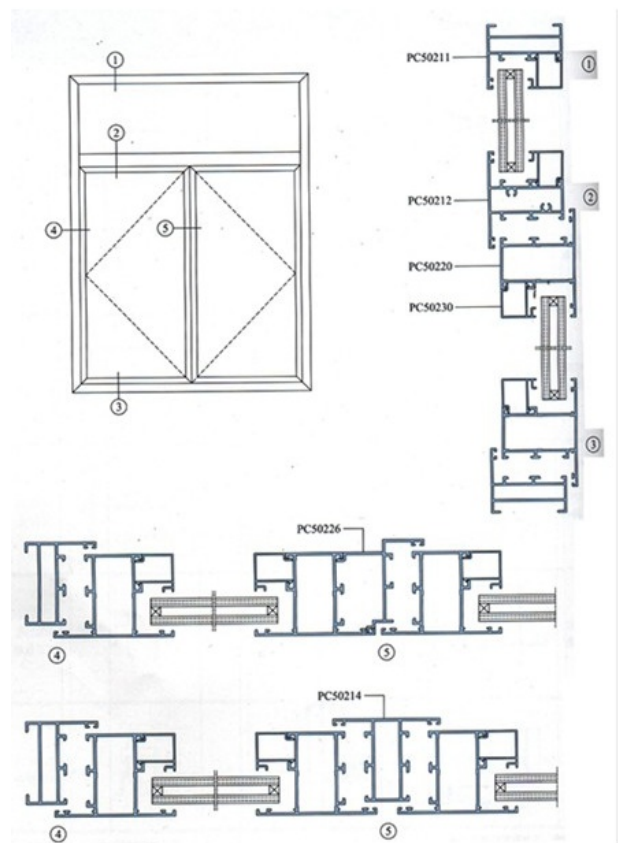
#### 1)Chemical composition

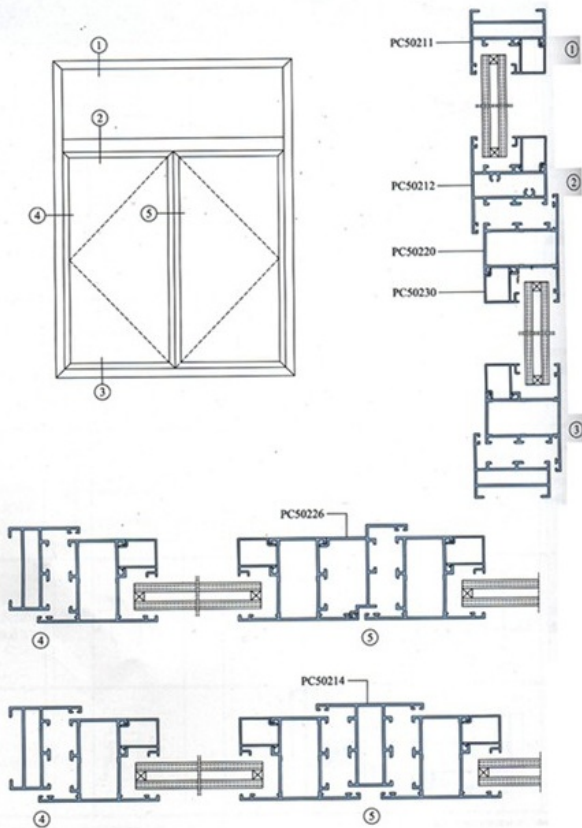
Alloy	Si	Fe	Cu	Mn	Mg	Cr	Zn	Ti	Impurity	Al
6063	0.2-0.6	0.35	0.1	0.1	0.45-0.9	0.1	0.1	0.1	0.15	Rest
6061	0.4-0.8	0.7	0.15-0.4	0.15	0.8-1.2	0.04-0.35	0.25	0.15	0.15	Rest
6060	0.3-0.6	0.1-0.3	0.1	0.1	0.35-0.6	-	0.15	0.1	0.15	Rest
6005	0.6-0.9	0.35	0.1	0.1	0.40-0.6	0.1	0.1	0.1	0.15	Rest

#### 2)Mechanical property

Alloy	Temper	Tensile strength	Yield strength	Elongation
6063	T5	≥ 160Mpa	≥ 110Mpa	≥ 8%
	T6	≥ 205Mpa	≥ 180Mpa	≥ 8%
6061	T6	≥ 265Mpa	≥ 245Mpa	≥ 8%

## 2. Specifications :





#### Competitive Advantage:

- 1)Engineering design and support.
- 2)Deeply processing of aluminium door extrusions : cutting, punching, drilling, milling, and fabricating.
- 3)Our aluminium door extrusions with high Quality system, strictly inspection during production and whole inspection before package.
- 4)Our aluminium door extrusions with good performance , product warranty for 15 years.



+86-13861643436

aluminum@hentec.com.cn

aluminumextrusion-profiles.com

Qinfeng Road No.555 Huashi Town Jiangyin Jiangsu China (mainland) 214421